

CERTIFIED LAND CORNER RESTORATION

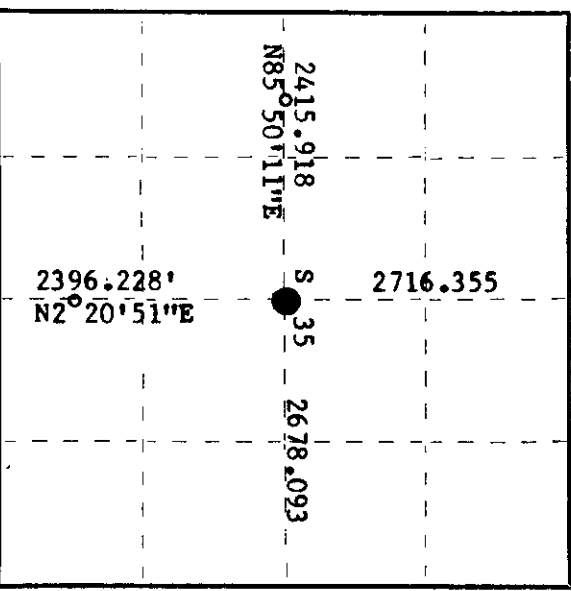
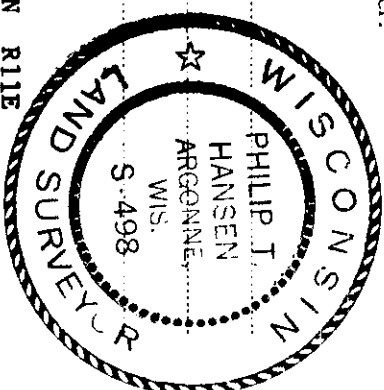
Index No. **X-19**

State of Wisconsin

County of Oneida } ss.

I Phillip T. Hansen, do hereby certify that on the 19th day of April, 1978, I found established the C 1/4 section of the 35 corner of 36 Township 11 East, North, Range 36, Fourth Principal Meridian, as described hereon; and that from this evidence I established a new monument and accessories as described hereon to perpetuate the original location of this corner.

Resident witnesses:  
Glen Barker  
Jim Clefflin  
Herb Wagoner



○ = Corner monument restored.

History of original corner establishment:

Corner established by B.F. Dorr, County Surveyor, in 1906.

H.C. Lawrence, Registered Land Surveyor, recovered an old post in 1954 when he ran the N-S 1/4 line and the E-W 1/4 line. Notes indicate that either Dorr had an error in his notes or the corner had been moved from its original position.

Description of corner evidence found:

Recovered H.C. Lawrence's which bears N 27° 32' 30" W, 20.124' from new location. Ran traverse from N 1/4 to S 1/4 and from E 1/4 to W 1/4 corners to establish C 1/4 corner. Corner sets S 85° 50' 11" W, 2678.093 ft. from E 1/4. N 85° 50' 11" E 2415.918 from W 1/4. N 2° 20' 51" E, 2396.228 feet from S 1/4 and S 2° 20' 51" W, 2717.355 of N 1/4. It is apparent that the old corner had been moved.

Description of monument and accessories I established to perpetuate the original location of this corner.

Set 2 1/2" Berntsen A-1 Federal Monument at new location. Monument projects 18" above ground. Cap stamped:

- Marked NBT's - Black Spruce 8" S70°E, 32.2 links T36N R11E
- Black Spruce 6" S40°W, 60.5 links C 1/4 S 35
- Black Spruce 10" N28°E, 61 links S498-1978

Dated at Rhinelander, Wis., this 1st day of May, 1978.

Signature Phillip T. Hansen Title Registered Land Surveyor Registration No. S-498  
(County Surveyor, Registered Land Surveyor, or other duly authorized official)

Office of Register of Deeds, County of Oneida. I hereby certify that the within instrument was filed in this office for record on the 15th day of May, 1978 at 2:00 o'clock P. M.

Doris Lange Hansen  
(Register of Deeds)

By Frank M. Brown Deputy

04075M119M

CERTIFIED LAND CORNER RESTORATION

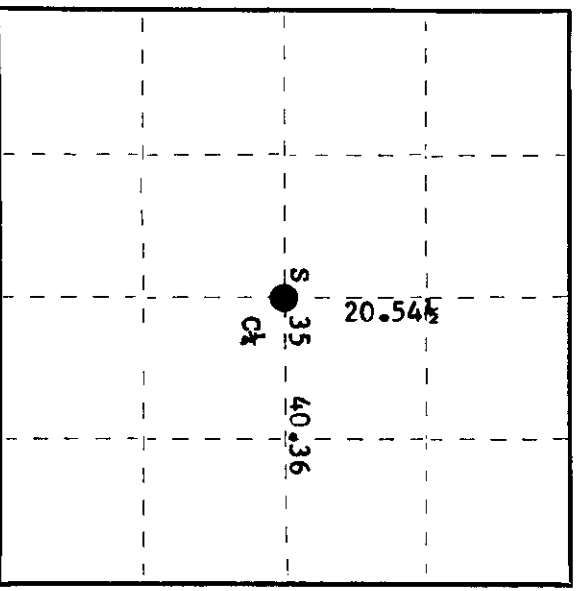
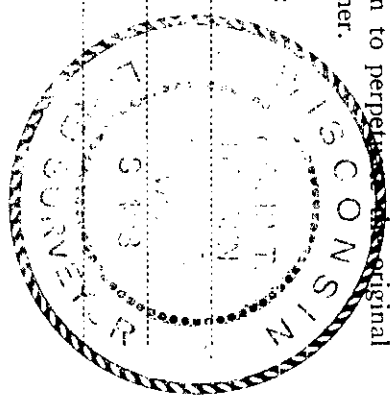
Index No. **X-19**

State of Wisconsin }  
County of Oneida } ss.

I Phillip T. Hansen, do hereby certify that on the 9th day of January, 19 78, I found evidence of the C 1/4 corner of Section 35 Township 36 North, Range 11 East, Fourth Principal Meridian,

as described hereon; and that from this evidence I established a new monument and accessories as described hereon to perpetuate the original location of this corner.

Resident witnesses:  
Glen Barker  
Jim Claffin  
Herb Wagoner



History of original corner establishment: Corner established by H.C. Lawrence, Registered Land Surveyor, in 1954. Ran random line west from 1/4 corner between Sections 35 & 36 at 40.36 an old N-S fence line with old C 1/4 post 82 links south, at 77.11 chains, old 1/4 post is 92 links north at right angles. B.F. Dorr had set the C 1/4 in 1906, but no evidence was found. Recovered B.F. Dorr's NC 1/16 corner and stump of his pine stump. Ran random line south from this corner 20.544 chains (Dorr's distance) and set C 1/4 at 40.36 chains west of E 1/4 corner. Continued line at 22.09 chains closed out at old C 1/4 post. It was evident that someone had move the old C 1/4 post from its original position.

Description of corner evidence found:  
Recovered H.C. Lawrence's 5" cedar post, squared and scribed C 1/4 S35 C 1/4. Post was in very poor condition.  
No BT's in evidence.

Description of monument and accessories I established to perpetuate the original location of this corner.

Replaced cedar post with 2 1/2" Berntsen A-1 Federal Monument (CPI), stamped:  
Marked NBT's - Black Spruce 10" N32°E, 30.2 links, T36N R11E  
Black Spruce 8" S9°W, 59.9 links, S 35 40.36  
Black Spruce 7" S35°W, 90.3 links, C 1/4  
all scribed C 1/4 BT. S498-1978

Corner sets on the south edge of an old grown over logging road.

Dated at Rhinelander, Wis., this 11th day of January, 19 78.

Signature Phillip T. Hansen Title Registered Land Surveyor Registration No. S-498  
(County Surveyor, Registered Land Surveyor, or other duly authorized official)

Office of Registrar of Deeds, County of Oneida  
at 4:45 o'clock P. M. 36th day of January, 19 78  
I hereby certify that the within

Dorcas Vernege Kuehn  
(Register of Deeds)

By Dorcas Vernege Kuehn Deputy

3611352020