

CERTIFIED LAND CORNER RESTORATION

Index No. W-20

State of Wisconsin }
County of Oneida } ss.

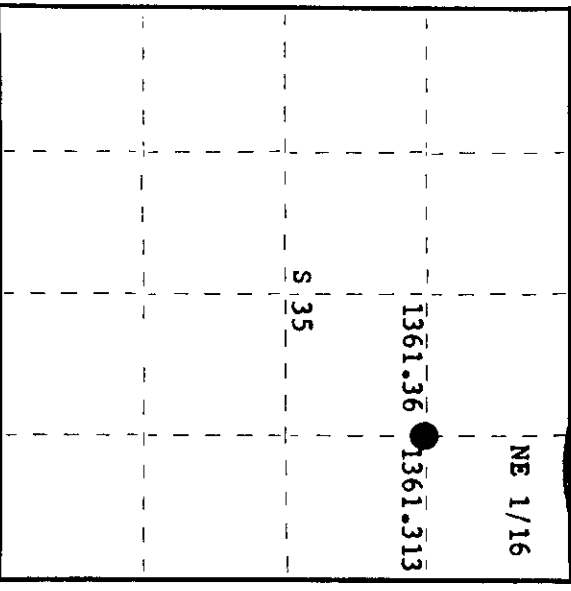
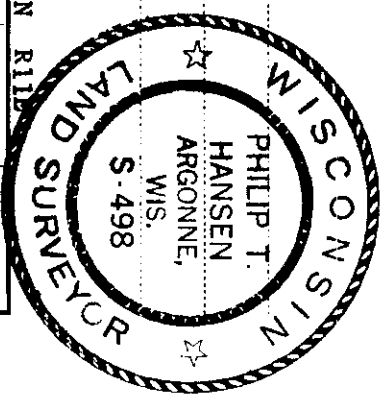
History of original corner establishment:
No records of any previous survey.

I Phillip T. Hansen, do hereby certify that on the 25th day of April, 1978, I ~~restored~~ **established** the NE 1/16 corner of Section 35 Township 36 North, Range 11 East, Fourth Principal Meridian.

as described hereon; and that from this evidence I established a new monument and accessories as described hereon to perpetuate the original location of this corner.

Resident witnesses:

- Glen Barker
- Jim Claffin
- Herb Wagoner



Description of corner evidence found:

No evidence of any corner recovered.

Position computed from traverse from previously established NC 1/16 and N 1/16 corner between Sections 35 & 36. Total distance computed at 2722.673 feet, bearing N 86° 51' 03" E. Computed position at 1361.36 feet from NC 1/16 and 1361.313 feet S 86° 51' 03" W of N 1/16 corner.

Description of monument and accessories I established to perpetuate the original location of this corner.

Set a 1 1/2" iron pipe with 2" brass cap, projecting 24" above ground. Cap stamped:

Marked NBT's - White Pine 12" N48°E, 31.85 feet S498
 White Pine 10" N19°W, 62.70 feet, scribed 1/16 BT. T36N R11E

NE 1/16 S 35
CPI-1978

Dated at Rhineland, Wis., this 1st day of May, 1978.

Signature Phillip T. Hansen Title Registered Land Surveyor Registration No. S-498
(County Surveyor, Registered Land Surveyor, or other duly authorized official)

Office of Register of Deeds, County of Oneida
Instrument was filed in this office for record on the 15th day of May, 1978 at 2:00 o'clock P. M.

Doris Verstege Fiedler
(Register of Deeds)

By Frank M. Boomer Deputy

2611353010