

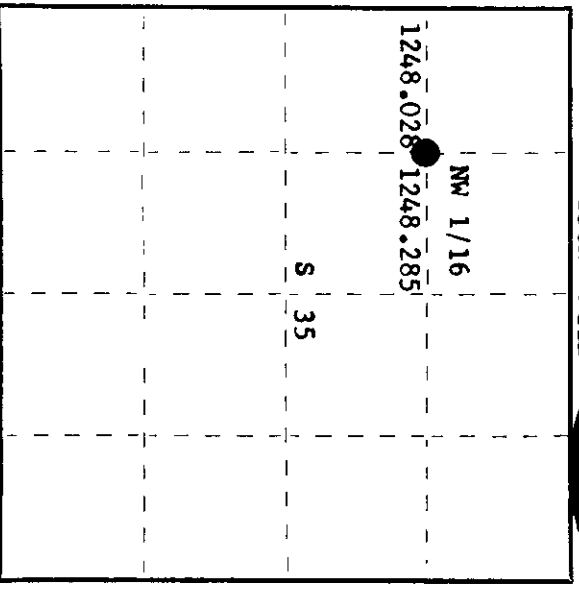
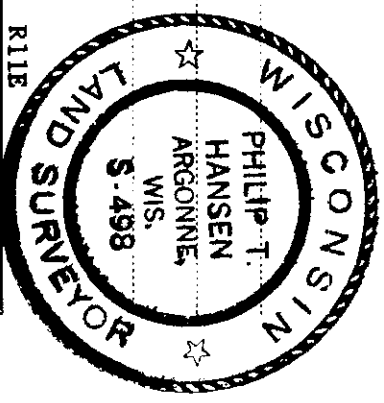
CERTIFIED LAND CORNER RESTORATION

Index No. W-18

State of Wisconsin }  
County of Oneida } ss.

I Phillip T. Hansen, do hereby certify that on the 25th day of April, 1978, I ~~found~~ restored the NW 1/16 corner of Section 35 Township 36 North, Range 11 East, Fourth Principal Meridian, as described hereon; and that from this evidence I established a new monument and accessories as described hereon to perpetuate the original location of this corner.

Resident witnesses:  
Glen Barker  
Jim Claflin  
Herb Wagoner



History of original corner establishment:  
**No records of any previous survey.**

Description of corner evidence found:

**No evidence of any corner recovered.**  
Corner established by traverse and computation. Ran traverse from position from N 1/16 to NW 1/16 corner. Total distance is 2496.313 feet at bearing N 85° 39' 15" E. Set NW 1/16 at 1248.028 ft. N 85° 39' 15" of N 1/16 corner.

Description of monument and accessories I established to perpetuate the original location of this corner.

Set 1 1/2" iron pipe with 2" brass cap projecting 30" above ground. Cap stamped:  
Marked NPT's - White Pine 6" S6°E, 44.40'  
White Pine S39°W, 43.52', scribed 1/16 BT.

S498  
T36N R11E  
NW 1/16 S35  
CPI-1978

Dated at Rhineland, Wis., this 1st day of May, 1978.

Signature Phillip T. Hansen Title Registered Land Surveyor Registration No. S-498  
(County Surveyor, Registered Land Surveyor, or other duly authorized official)

Office of Register of Deeds, County of Oneida  
Instrument was filed in this office for record on the 15th day of May, 1978 at 2:00 o'clock P. M.

Dennis Leverage Tuedeman  
(Registered of Deeds)

By Jack M. Boorn Deputy

○ = Corner monument restored.

26113 W 30 W 0