

CERTIFIED LAND CORNER RESTORATION 23

State of Wisconsin

County of Price

ss.

I, Elwood L. Olson, do hereby certify that on the 19th day of July, 1967, I found evidence of the Section corner of Sections 1-6-7-12 Township 37 North, Range 3 and 4 East, Fourth Principal Meridian, as described hereon; and that from this evidence I established a new monument and accessories as described hereon to perpetuate the original location of this corner:

Description of original monument and accessories and subsequent restorations:

Original corner established in 1864 by Alex. Anderson, Government Deputy Surveyor. 874-9 corner form by Wm. H. Lambert, U.S. Forest Service, dated 12-1-1936: Corner marked by 6 inch squared cedar post which is between 10 and 20 years old. Found remains of two of the original witness trees. Aspen 3" N38°E, 47 links. Metal location poster.

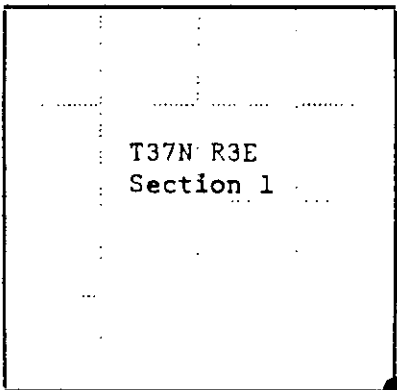
Description of corner evidence found:

Corner marked by old decayed 5" x 6" squared cedar post extending 20" above ground. Found Lambert's old metal location poster on a dead Aspen 10" dia. which bears N38°E, 31.0 feet from the corner post. I accept the old post as a perpetuation of the original corner location. From corner I measure 327 feet south to center of a partly completed road which brs. NE-SW.

Description of monument and accessories I established to perpetuate the original location of this corner:

In place of said old post I set a 2" inside dia., 5' long, flanged bottom, concrete filled, galvanized wrought iron pipe, extending 14" above ground and surrounded by a mound of stone, with 3" bronze tablet on top of pipe stamped: T37N, R3E, R4E, S1, S6, S7, S12, S.785, 1967. Blazed and scribed new bearing trees as follows:

- Maple 5" S14°30'W 13.6 feet.
Maple 4" N87°W 25.4 feet.
Maple 6" N26°W 23.5 feet.
Iron sign post, North, 2.3 feet.
Metal BT sign on all bearing trees.



Resident witnesses.....

Dated at Park Falls Wisconsin, this 24th day of January 19 68.

Signature Elwood L. Olson Title Registered Land Surveyor (County Surveyor, Registered Land Surveyor, or other duly authorized official)

Surveyors Registration No. S-785

Office of ..... County of .....

I hereby certify that the within instrument was filed in this office for record on the ..... day of ..... 19 ....., and was filed in Book No. .... Page No. .... of County Records.

Signature ..... Title .....

3703010000

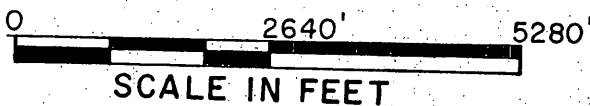
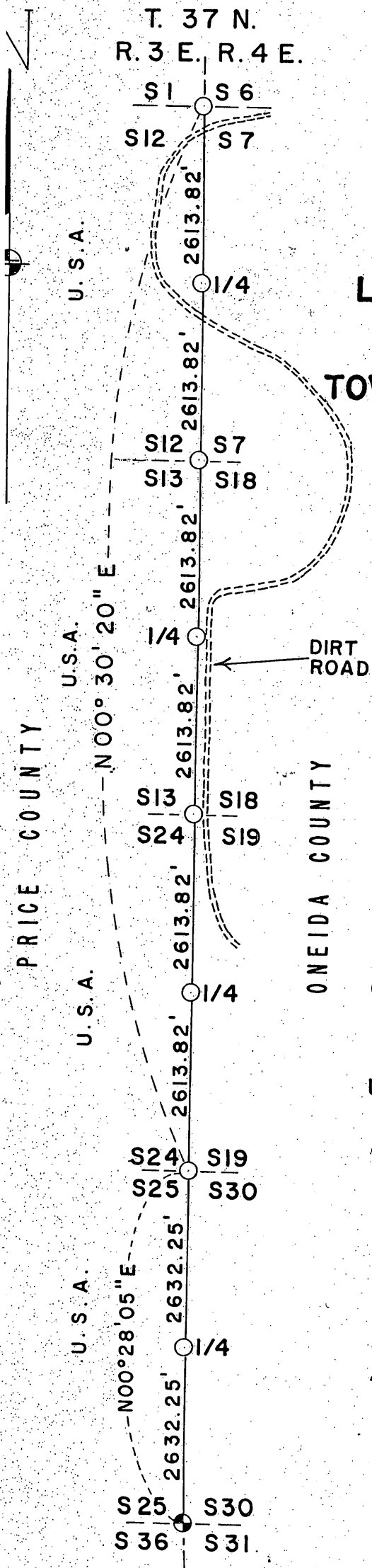
E-1 (31-4)

T. 37 N.  
R. 3 E. R. 4 E.

# PLAT OF SURVEY,

## U.S. GOVERNMENT LAND

### LINE AND CORNERS COMMON TO SECTIONS 7-12, 13-18, 19-24, and 25-30, TOWNSHIP 37 NORTH, RANGE 3 and 4 EAST, FOURTH PRINCIPAL MERIDIAN, PRICE and ONEIDA COUNTY, WISCONSIN



### LEGEND

- Corner position marked by a 2 inch inside diameter, 5 foot long, concrete filled, galvanized iron pipe capped with a 3 inch diameter brass tablet stamped to identify corner.
- ⊙ Corner position marked by a 6 inch by 6 inch square concrete monument set in 1912 by Robert Jakoubek, Deputy County Surveyor, Price County.

U.S.A.- U.S. Government land.

REGISTER OF DEEDS OFFICE  
ONEIDA COUNTY, WIS  
**FILED**  
FEB 16 1989  
At \_\_\_\_\_ O'Clock \_\_\_\_\_ M  
THOMAS H. LEIGHTON  
REGISTER OF DEEDS

370312 2000

G-1  
(37-4)

Plat of Survey  
U.S. Government Land  
Line and Corners Common to Sections 7-12, 13-18, 19-24, and 25-30,  
Township 37 North, Range 3 and 4 East  
Fourth Principal Meridian, Price and Oneida County, Wisconsin

Survey Notes

This survey was made by the U.S. Department of Agriculture, Forest Service, as a retracement of 4 miles of the original Government survey line between the corner to sections 1-6-7-12, and the corner to sections 25-30-31-36, township 37 north, range 3 and 4 east, common to Price and Oneida County, fourth principal meridian, Wisconsin.

The purpose of this survey was to recover, restore and perpetuate the corners established by the original Government survey.

The original Government survey of the line between townships 37 north, ranges 3 and 4 east, was made in 1864.

The corners recovered and restored by this survey are marked by the monument described in the legend. The bearing between corner positions is a true bearing by reference to a Polaris observation. The distances on the control traverse of this survey were measured by use of electronic distance measuring equipment. Each monumented corner position is referenced to blazed and scribed bearing trees and described reference objects.

Corners Recovered

1. Corner to Sections 1-6-7-12.

Corner recovered as monumented in 1967 by S-785 and as described on certified land corner restoration certificate on file in the Price County records in Volume 1 of Survey Maps, Page 155, Document No. 178020.

2. Corner to Sections 25-30-31-36.

Corner monument recovered in place, as monumented in 1912 by Robert Jakoubek, Deputy County Surveyor, and as described on certified land corner restoration certificate filed in the Price County records in 1965.

Corners Restored

1. Corner to Sections 7-12-13-18.

Corner restored by single proportionate measurement between the corner to sections 1-6-7-12 and the corner to sections 19-24-25-30.

Corner references: Maple 7", N39°E, 25.2 feet.  
Elm 10", S68°E, 67.1 feet.  
Maple 8", S7°W, 24.1 feet.  
Iron sign post, North, 1.8 feet.

2. Corner to Sections 13-18-19-24.

Corner restored by single proportionate measurement between the corner to sections 1-6-7-12 and the corner to sections 19-24-25-30.

Corner references: Maple 6", S39°W, 3.6 feet.  
Maple 8", N50°E, 17.3 feet.  
Maple 9", N7°E, 15.6 feet.  
Iron sign post, South, 1.7 feet.

3. Corner to Sections 19-24-25-30.

Corner recovered marked by a very old, decayed, 4 inch squared cedar post, in place. Old post accepted as best available evidence of the original corner position.

Corner references: Maple 8", S41°E, 58.1 feet.  
Maple 8", S1°W, 19.3 feet.  
Maple 5", S25°W, 31.9 feet.  
Maple 7", N55°E, 23.9 feet.  
Iron sign post, South, 2.0 feet.

Plat of Survey  
U.S. Government Land  
Line and Corners Common to Sections 7-12, 13-18, 19-24, and 25-30,  
Township 37 North, Range 3 and 4 East,  
Fourth Principal Meridian, Price and Oneida County, Wisconsin.

4. Quarter Corner to Sections 7-12.

Corner restored at midpoint and on line between the corner to sections 1-6-7-12, and the corner to sections 7-12-13-18.

- Corner references: Maple 6", N87°E, 16.2 feet.
- Elm 7", N79°W, 18.5 feet.
- Ash 7", N25°E, 27.4 feet.
- Iron sign post, North, 2.2 feet.

5. Quarter Corner to Sections 13-18.

Corner restored at midpoint and on line between the corner to sections 7-12-13-18, and the corner to sections 13-18-19-24.

- Corner references: Maple 8", S4°E, 31.8 feet.
- W. Ash 8", N51°E, 14.4 feet.
- Maple 13", S59°W, 53.5 feet.
- Iron sign post, South, 1.8 feet.

6. Quarter Corner to Sections 19-24.

Corner restored at midpoint and on line between the corner to sections 13-18-19-24, and the corner to sections 19-24-25-30.

- Corner references: Maple 6", N59°E, 19.4 feet.
- Elm 11", N16°W, 31.0 feet.
- Maple 7", S30°W, 1.8 feet.
- Iron sign post, North, 2.0 feet.

7. Quarter Corner to Sections 25-30.

Corner restored at midpoint and on line between the corner to sections 19-24-25-30, and the corner to sections 25-30-31-36.

- Corner references: Elm 8", N40°W, 35.5 feet.
- Elm 5", S60°E, 10.6 feet.
- Elm 13", S9°E, 110.7 feet.
- Iron sign post, North, 1.6 feet.

The field survey notes and a copy of the plat of survey are on file in the Forest Supervisor's Office at Park Falls, Wisconsin. A copy of the plat of survey is on file in the District Ranger's Office at Park Falls, Wisconsin.

Surveyor's Affidavit

State of Wisconsin )  
County of Price-Oneida ) ss

I, Elwood L. Olson, land surveyor, U.S. Forest Service, and a registered land surveyor in the State of Wisconsin, hereby certify that I have surveyed the lines common to sections 7-12, 13-18, 19-24, 25-30, township 37 north, range 3 and 4 east, fourth principal meridian, State of Wisconsin, in accordance with the rules for the survey of the public lands and with the statutes of the State of Wisconsin.

The plat map and the survey notes are an accurate representation of the corners recovered and restored.

Date of Survey: 1974-1975

Elwood L. Olson  
Land Surveyor, U.S. Forest Service  
R.L.S. - State of Wisconsin  
Certificate S-785