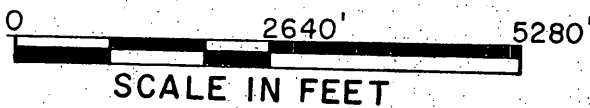
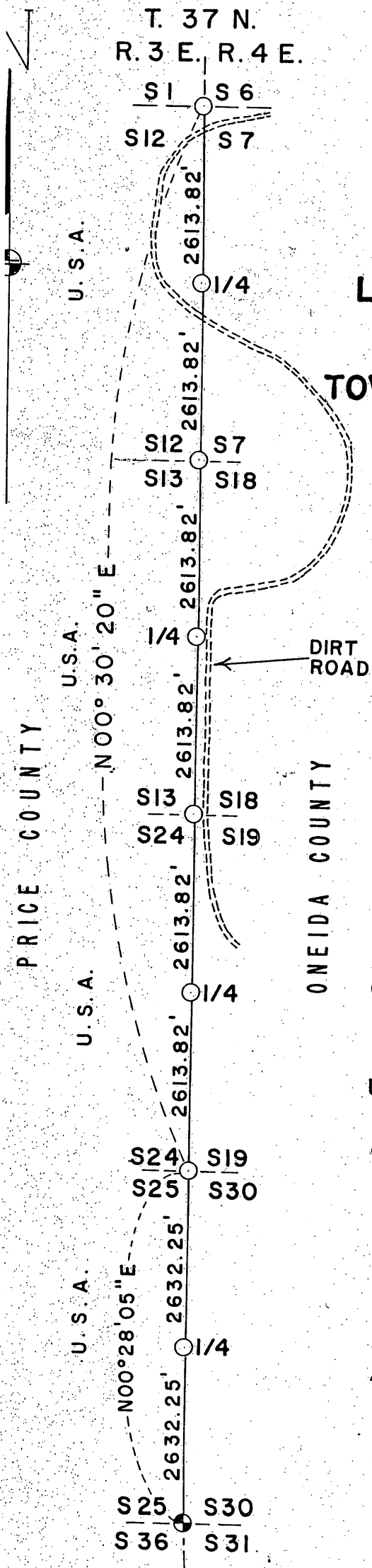


T. 37 N.
R. 3 E. R. 4 E.

PLAT OF SURVEY,

U.S. GOVERNMENT LAND

LINE AND CORNERS COMMON TO SECTIONS 7-12, 13-18, 19-24, and 25-30, TOWNSHIP 37 NORTH, RANGE 3 and 4 EAST, FOURTH PRINCIPAL MERIDIAN, PRICE and ONEIDA COUNTY, WISCONSIN



LEGEND

- Corner position marked by a 2 inch inside diameter, 5 foot long, concrete filled, galvanized iron pipe capped with a 3 inch diameter brass tablet stamped to identify corner.
- ⊙ Corner position marked by a 6 inch by 6 inch square concrete monument set in 1912 by Robert Jakoubek, Deputy County Surveyor, Price County.

U.S.A.- U.S. Government land.

REGISTER OF DEEDS OFFICE
ONEIDA COUNTY, WIS
FILED
FEB 16 1989
At _____ O'Clock _____ M
THOMAS H. LEIGHTON
REGISTER OF DEEDS

370312 2000

G-1
(37-4)

Plat of Survey
U.S. Government Land
Line and Corners Common to Sections 7-12, 13-18, 19-24, and 25-30,
Township 37 North, Range 3 and 4 East
Fourth Principal Meridian, Price and Oneida County, Wisconsin

Survey Notes

This survey was made by the U.S. Department of Agriculture, Forest Service, as a retracement of 4 miles of the original Government survey line between the corner to sections 1-6-7-12, and the corner to sections 25-30-31-36, township 37 north, range 3 and 4 east, common to Price and Oneida County, fourth principal meridian, Wisconsin.

The purpose of this survey was to recover, restore and perpetuate the corners established by the original Government survey.

The original Government survey of the line between townships 37 north, ranges 3 and 4 east, was made in 1864.

The corners recovered and restored by this survey are marked by the monument described in the legend. The bearing between corner positions is a true bearing by reference to a Polaris observation. The distances on the control traverse of this survey were measured by use of electronic distance measuring equipment. Each monumented corner position is referenced to blazed and scribed bearing trees and described reference objects.

Corners Recovered

1. Corner to Sections 1-6-7-12.

Corner recovered as monumented in 1967 by S-785 and as described on certified land corner restoration certificate on file in the Price County records in Volume 1 of Survey Maps, Page 155, Document No. 178020.

2. Corner to Sections 25-30-31-36.

Corner monument recovered in place, as monumented in 1912 by Robert Jakoubek, Deputy County Surveyor, and as described on certified land corner restoration certificate filed in the Price County records in 1965.

Corners Restored

1. Corner to Sections 7-12-13-18.

Corner restored by single proportionate measurement between the corner to sections 1-6-7-12 and the corner to sections 19-24-25-30.

Corner references: Maple 7", N39°E, 25.2 feet.
Elm 10", S68°E, 67.1 feet.
Maple 8", S7°W, 24.1 feet.
Iron sign post, North, 1.8 feet.

2. Corner to Sections 13-18-19-24.

Corner restored by single proportionate measurement between the corner to sections 1-6-7-12 and the corner to sections 19-24-25-30.

Corner references: Maple 6", S39°W, 3.6 feet.
Maple 8", N50°E, 17.3 feet.
Maple 9", N7°E, 15.6 feet.
Iron sign post, South, 1.7 feet.

3. Corner to Sections 19-24-25-30.

Corner recovered marked by a very old, decayed, 4 inch squared cedar post, in place. Old post accepted as best available evidence of the original corner position.

Corner references: Maple 8", S41°E, 58.1 feet.
Maple 8", S1°W, 19.3 feet.
Maple 5", S25°W, 31.9 feet.
Maple 7", N55°E, 23.9 feet.
Iron sign post, South, 2.0 feet.

Plat of Survey
 U.S. Government Land
 Line and Corners Common to Sections 7-12, 13-18, 19-24, and 25-30,
 Township 37 North, Range 3 and 4 East,
 Fourth Principal Meridian, Price and Oneida County, Wisconsin.

4. Quarter Corner to Sections 7-12.

Corner restored at midpoint and on line between the corner to sections 1-6-7-12, and the corner to sections 7-12-13-18.
 Corner references: Maple 6", N87°E, 16.2 feet.
 Elm 7", N79°W, 18.5 feet.
 Ash 7", N25°E, 27.4 feet.
 Iron sign post, North, 2.2 feet.

5. Quarter Corner to Sections 13-18.

Corner restored at midpoint and on line between the corner to sections 7-12-13-18, and the corner to sections 13-18-19-24.
 Corner references: Maple 8", S4°E, 31.8 feet.
 W. Ash 8", N51°E, 14.4 feet.
 Maple 13", S59°W, 53.5 feet.
 Iron sign post, South, 1.8 feet.

6. Quarter Corner to Sections 19-24.

Corner restored at midpoint and on line between the corner to sections 13-18-19-24, and the corner to sections 19-24-25-30.
 Corner references: Maple 6", N59°E, 19.4 feet.
 Elm 11", N16°W, 31.0 feet.
 Maple 7", S30°W, 1.8 feet.
 Iron sign post, North, 2.0 feet.

7. Quarter Corner to Sections 25-30.

Corner restored at midpoint and on line between the corner to sections 19-24-25-30, and the corner to sections 25-30-31-36.
 Corner references: Elm 8", N40°W, 35.5 feet.
 Elm 5", S60°E, 10.6 feet.
 Elm 13", S9°E, 110.7 feet.
 Iron sign post, North, 1.6 feet.

The field survey notes and a copy of the plat of survey are on file in the Forest Supervisor's Office at Park Falls, Wisconsin. A copy of the plat of survey is on file in the District Ranger's Office at Park Falls, Wisconsin.

Surveyor's Affidavit

State of Wisconsin)
 County of Price-Oneida) ss

I, Elwood L. Olson, land surveyor, U.S. Forest Service, and a registered land surveyor in the State of Wisconsin, hereby certify that I have surveyed the lines common to sections 7-12, 13-18, 19-24, 25-30, township 37 north, range 3 and 4 east, fourth principal meridian, State of Wisconsin, in accordance with the rules for the survey of the public lands and with the statutes of the State of Wisconsin.

The plat map and the survey notes are an accurate representation of the corners recovered and restored.

Date of Survey: 1974-1975

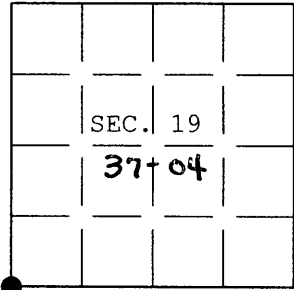
Elwood L. Olson

 Land Surveyor, U.S. Forest Service
 R.L.S. - State of Wisconsin
 Certificate S-785

U.S. PUBLIC LAND SURVEY MONUMENT RECORD

Note: This form is intended and designed to fulfill all requirements of Wisconsin Administrative Code, Chapter A-E 7.08 U.S. Public Land Survey Monument Record (3) (a) (b) (c) (d) (e) (f) (g) (h) (i). An additional sheet may be added if necessary to conform with said requirements.

(a) CORNER LOCATION: Plane Coordinates
 Cor. of Secs. 24, 19, 25 & 30 X:
 Township 37 North Y:
 Range 3 & 4 East of the 4th P.M. Datum:
 Town of Lynne County of Oneida



(b) HISTORY OF ORIGINAL CORNER ESTABLISHMENT

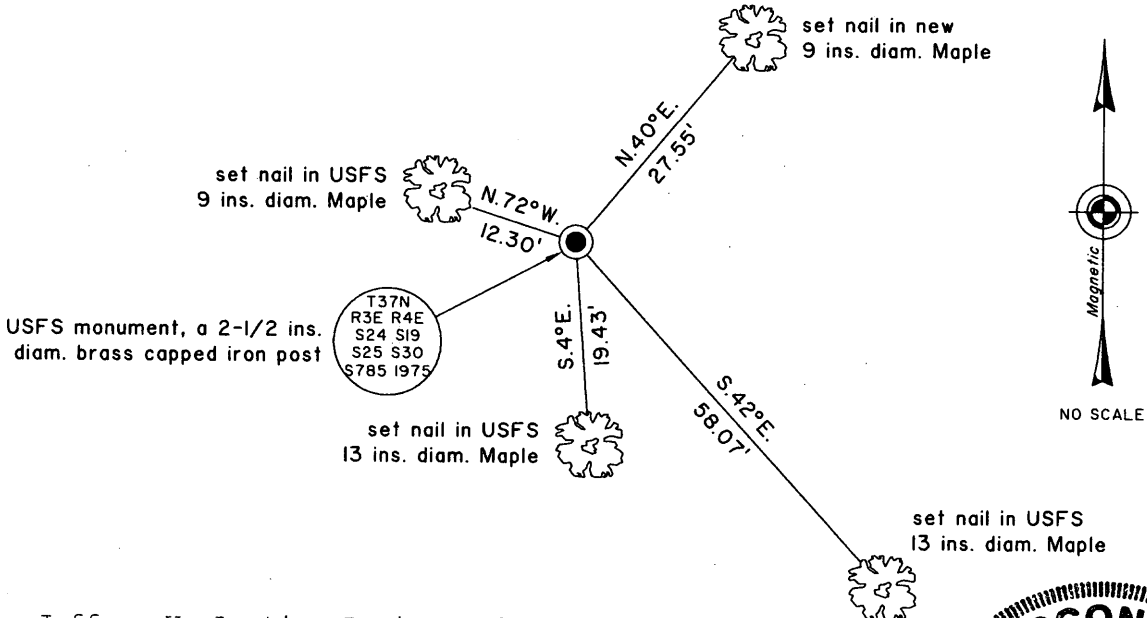
Original Surveyor: Anderson, Alex Original Accessories:
 Date of Survey: Commenced July, 1864 Hemlock 9" N.20°W., 38 lks.
 Completed July, 1864 Fir 8" N.43°E., 47 lks.
 Elm 20" S.50°E., 18 lks.
 Sugar 8" S.25°E., 44 lks.

(b) (f) (g) (h) Description of monument found at this corner and if it was accepted, state all evidence (material, testimonial, occupational, plats, records, other monuments) used as a basis for accepting. If not accepted or if nothing was found, state evidence used as basis for establishing location. If re-established through lost corner proportionate methods, indicate all monuments, distances and directions used to establish. Indicate type of monument and sign post found or set.

1975: OCS# L-867 by the U.S. Forest Service. Corner marked by a 2" inside diam. concrete filled iron pipe with brass tablet.

1 July 2004: I found and accepted a 2-1/2 ins. diam. iron post, projecting 12 ins. above a rock cairn with brass cap mkd. as shown below. I found or established accessories as shown below and set a white plastic sign post bearing South, 2 ft. dist.

(c) (d) (e) Plan view of corner with ties to at least 4 witness monuments. If in disagreement with previously established corner, show the distances between the two corners and also indicate the ties to the disputed.



(i) I, Jeffrey W. Austin, Registered Land Surveyor No. S-1885, hereby certify upon honor that the corner location on this record was determined by me or under my direction and control and that this U.S. Public Land Survey Monument Record is correct and complete to the best of my knowledge and belief.

Signature

Date

9 FEB 2005



370324 00 00

INDEX NO. R-1