

CERTIFIED LAND CORNER RESTORATION

16

State of Wisconsin }
County of Barrick } ss.

I, Elwood L. Olson, do hereby certify that on the 2th day of June, 1901, I found evidence of the Section corner of Sections 25-30-31-36 Township 37 North, Range 3 and 4 East, Fourth Principal Meridian, as described hereon; and that from this evidence I established a new monument and accessories as described hereon to perpetuate the original location of this corner:

Description of original monument and accessories and subsequent restorations:

Original corner established in 1861 by Alex Anderson, Government Deputy Surveyor.

- Hamlock 10 S 67° 23 links.
- Lin 20 N 20° 13 links.
- Birch 11 S 32° 8 links.
- Birch 12 S 38° 29 links.

From notes of Robert Jakoubek, Surveyor, dated June 1912.

Corner to secs. 25-30-31-36, Orig. B.Ts. Set concrete post 6x6x30", 22" in ground, clay soil, to face bearings of all B.Ts.

As B.Ts bear from post:

- Per S 31 1/2° 25 lks.
- Lin N 17° 9 lks.
- Per N 19° 11 lks.
- Per S 36 1/2° 20 1/2 lks.

- New B.Ts:
- Ham. 8 S 67° 21 lks.
 - Ham. 10 N 31° 15 lks.

Description of corner evidence found:

Found corner monument, set by Jakoubek, leaning over. Monument is a 6" x 6" square concrete post, 30" long, with X on top, and marked 25, 30, 31, 36 on sides. Found evidence of orig. bearing trees as returned by Jakoubek, as follows: Potted Hamlock stump, S 32°, 25 links; rotted Birch stump, N 19°, 11 links; rotted Birch stump, S 36 1/2°, 20 1/2 links. Found no evidence of trees at the bearings and distances given by Jakoubek for his B.Ts, but found rotted Hamlock stump at S 67°, 15 links. From corner meas. 36 feet N. to center of old road which brs. generally N. and S.

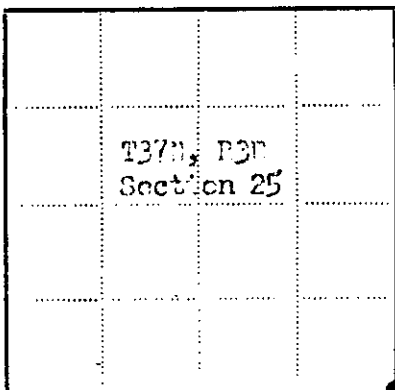
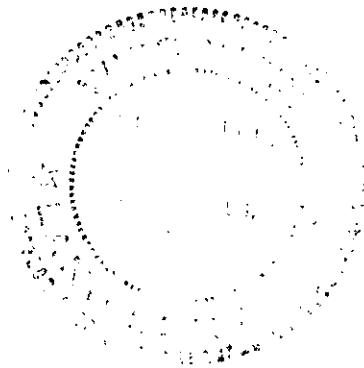
Description of monument and accessories I established to perpetuate the original location of this corner:

Re-set said concrete monument firmly in ground, 10" above ground and built a mound of stone around monument. Set red top cedar post 2.4 feet S. of monument.

Blazed and scribed new bearing trees as follows:

- Per 7" S 52°, 25.0 feet.
- N. Ash 12" S 35°, 36.5 feet.
- Maple 5" N 19°, 11.5 feet.

Paint B.Ts red. Nail metal sign on all B.Ts.



● = Corner monument restored
□ =

Resident witnesses.....

Dated at Barrick Falls Wisconsin, this 1st day of July 1901.

Signature Elwood L. Olson Title Registered Land Surveyor
(County Surveyor, Registered Land Surveyor, or other duly authorized official)

Surveyors Registration No. 5,125

Office of..... County of.....

I hereby certify that the within instrument was filed in this office for record on the..... day of..... 19....., and was filed in Book No..... Page No..... of County Records.

Signature..... Title.....

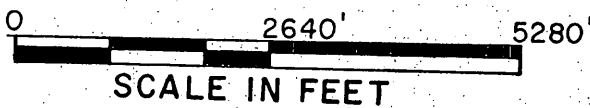
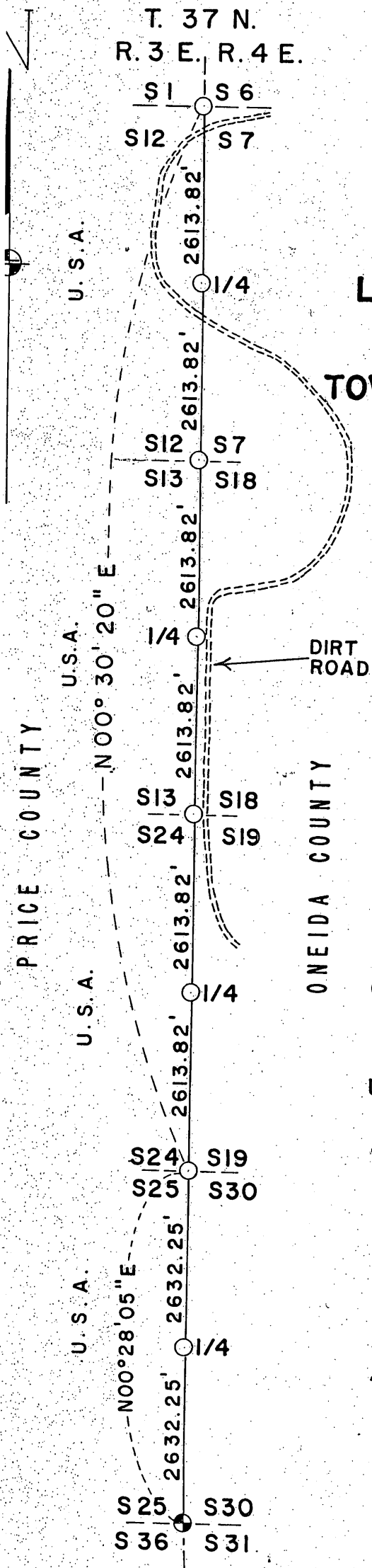
703250000
3-1-4

T. 37 N.
R. 3 E. R. 4 E.

PLAT OF SURVEY,

U.S. GOVERNMENT LAND

LINE AND CORNERS COMMON TO SECTIONS
7-12, 13-18, 19-24, and 25-30,
TOWNSHIP 37 NORTH, RANGE 3 and 4 EAST,
FOURTH PRINCIPAL MERIDIAN,
PRICE and ONEIDA COUNTY,
WISCONSIN



LEGEND

- Corner position marked by a 2 inch inside diameter, 5 foot long, concrete filled, galvanized iron pipe capped with a 3 inch diameter brass tablet stamped to identify corner.
- ⊙ Corner position marked by a 6 inch by 6 inch square concrete monument set in 1912 by Robert Jakoubek, Deputy County Surveyor, Price County.

U.S.A.- U.S. Government land.

REGISTER OF DEEDS OFFICE
ONEIDA COUNTY, WIS
FILED
FEB 16 1989
At _____ O'Clock _____ M
THOMAS H. LEIGHTON
REGISTER OF DEEDS

370312 2000

Filed for record 7-21-1975
1st Certified Land Corner Rest.

G-1
(37-4)

Plat of Survey
U.S. Government Land
Line and Corners Common to Sections 7-12, 13-18, 19-24, and 25-30,
Township 37 North, Range 3 and 4 East
Fourth Principal Meridian, Price and Oneida County, Wisconsin

Survey Notes

This survey was made by the U.S. Department of Agriculture, Forest Service, as a retracement of 4 miles of the original Government survey line between the corner to sections 1-6-7-12, and the corner to sections 25-30-31-36, township 37 north, range 3 and 4 east, common to Price and Oneida County, fourth principal meridian, Wisconsin.

The purpose of this survey was to recover, restore and perpetuate the corners established by the original Government survey.

The original Government survey of the line between townships 37 north, ranges 3 and 4 east, was made in 1864.

The corners recovered and restored by this survey are marked by the monument described in the legend. The bearing between corner positions is a true bearing by reference to a Polaris observation. The distances on the control traverse of this survey were measured by use of electronic distance measuring equipment. Each monumented corner position is referenced to blazed and scribed bearing trees and described reference objects.

Corners Recovered

1. Corner to Sections 1-6-7-12.

Corner recovered as monumented in 1967 by S-785 and as described on certified land corner restoration certificate on file in the Price County records in Volume 1 of Survey Maps, Page 155, Document No. 178020.

2. Corner to Sections 25-30-31-36.

Corner monument recovered in place, as monumented in 1912 by Robert Jakoubek, Deputy County Surveyor, and as described on certified land corner restoration certificate filed in the Price County records in 1965.

Corners Restored

1. Corner to Sections 7-12-13-18.

Corner restored by single proportionate measurement between the corner to sections 1-6-7-12 and the corner to sections 19-24-25-30.

Corner references: Maple 7", N39°E, 25.2 feet.
Elm 10", S68°E, 67.1 feet.
Maple 8", S7°W, 24.1 feet.
Iron sign post, North, 1.8 feet.

2. Corner to Sections 13-18-19-24.

Corner restored by single proportionate measurement between the corner to sections 1-6-7-12 and the corner to sections 19-24-25-30.

Corner references: Maple 6", S39°W, 3.6 feet.
Maple 8", N50°E, 17.3 feet.
Maple 9", N7°E, 15.6 feet.
Iron sign post, South, 1.7 feet.

3. Corner to Sections 19-24-25-30.

Corner recovered marked by a very old, decayed, 4 inch squared cedar post, in place. Old post accepted as best available evidence of the original corner position.

Corner references: Maple 8", S41°E, 58.1 feet.
Maple 8", S1°W, 19.3 feet.
Maple 5", S25°W, 31.9 feet.
Maple 7", N55°E, 23.9 feet.
Iron sign post, South, 2.0 feet.

Plat of Survey
 U.S. Government Land
 Line and Corners Common to Sections 7-12, 13-18, 19-24, and 25-30,
 Township 37 North, Range 3 and 4 East,
 Fourth Principal Meridian, Price and Oneida County, Wisconsin.

4. Quarter Corner to Sections 7-12.

Corner restored at midpoint and on line between the corner to sections 1-6-7-12, and the corner to sections 7-12-13-18.
 Corner references: Maple 6", N87°E, 16.2 feet.
 Elm 7", N79°W, 18.5 feet.
 Ash 7", N25°E, 27.4 feet.
 Iron sign post, North, 2.2 feet.

5. Quarter Corner to Sections 13-18.

Corner restored at midpoint and on line between the corner to sections 7-12-13-18, and the corner to sections 13-18-19-24.
 Corner references: Maple 8", S4°E, 31.8 feet.
 W. Ash 8", N51°E, 14.4 feet.
 Maple 13", S59°W, 53.5 feet.
 Iron sign post, South, 1.8 feet.

6. Quarter Corner to Sections 19-24.

Corner restored at midpoint and on line between the corner to sections 13-18-19-24, and the corner to sections 19-24-25-30.
 Corner references: Maple 6", N59°E, 19.4 feet.
 Elm 11", N16°W, 31.0 feet.
 Maple 7", S30°W, 1.8 feet.
 Iron sign post, North, 2.0 feet.

7. Quarter Corner to Sections 25-30.

Corner restored at midpoint and on line between the corner to sections 19-24-25-30, and the corner to sections 25-30-31-36.
 Corner references: Elm 8", N40°W, 35.5 feet.
 Elm 5", S60°E, 10.6 feet.
 Elm 13", S9°E, 110.7 feet.
 Iron sign post, North, 1.6 feet.

The field survey notes and a copy of the plat of survey are on file in the Forest Supervisor's Office at Park Falls, Wisconsin. A copy of the plat of survey is on file in the District Ranger's Office at Park Falls, Wisconsin.

Surveyor's Affidavit

State of Wisconsin)
 County of Price-Oneida) ss

I, Elwood L. Olson, land surveyor, U.S. Forest Service, and a registered land surveyor in the State of Wisconsin, hereby certify that I have surveyed the lines common to sections 7-12, 13-18, 19-24, 25-30, township 37 north, range 3 and 4 east, fourth principal meridian, State of Wisconsin, in accordance with the rules for the survey of the public lands and with the statutes of the State of Wisconsin.

The plat map and the survey notes are an accurate representation of the corners recovered and restored.

Date of Survey: 1974-1975

Elwood L. Olson
 Land Surveyor, U.S. Forest Service
 R.L.S. - State of Wisconsin
 Certificate S-785