

# U.S. PUBLIC LAND SURVEY MONUMENT RECORD

**Note:** This form is intended and designed to fulfill all requirements of Wisconsin Administrative Code, Chapter A-E 7.08 U.S. Public Land Survey Monument Record (3) (a) (b) (c) (d) (e) (f) (g) (h) (i). An additional sheet may be added if necessary to conform with said requirements.

(a) Corner location: Township 37 North

Range 4 East/West

Town/City/Village Lynne

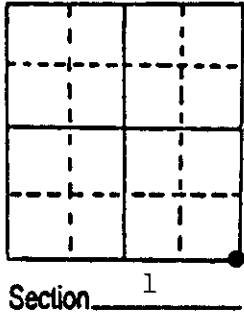
County Oneida

REGISTER OF DEEDS OFFICE  
ONEIDA COUNTY, WIS.

FILED

MAY 25 1990

At O'Clock M  
**THOMAS H. LEIGHTON**  
REGISTER OF DEEDS



(b) (f) (g) (h) Description of monument found at this corner and if it was accepted, state all evidence (material, testimonial, occupational, plats, records, other monuments) used as a basis for accepting. If not accepted or if nothing was found, state evidence used as basis for establishing location. If reestablished through lost corner proportionate methods, indicate all monuments, distances and directions used to establish.

Sept., 1860 - Alfred Millard, Deputy Surveyor, set post corner to Sections 1, 6, 7, and 12. Bearing trees: 8" W. Birch, S78°W, 21 links; 12" W. Birch, N17°W, 17 links; 7" Fir, N50°E, 19 links; 14" W. Pine, S72°E, 41 links.

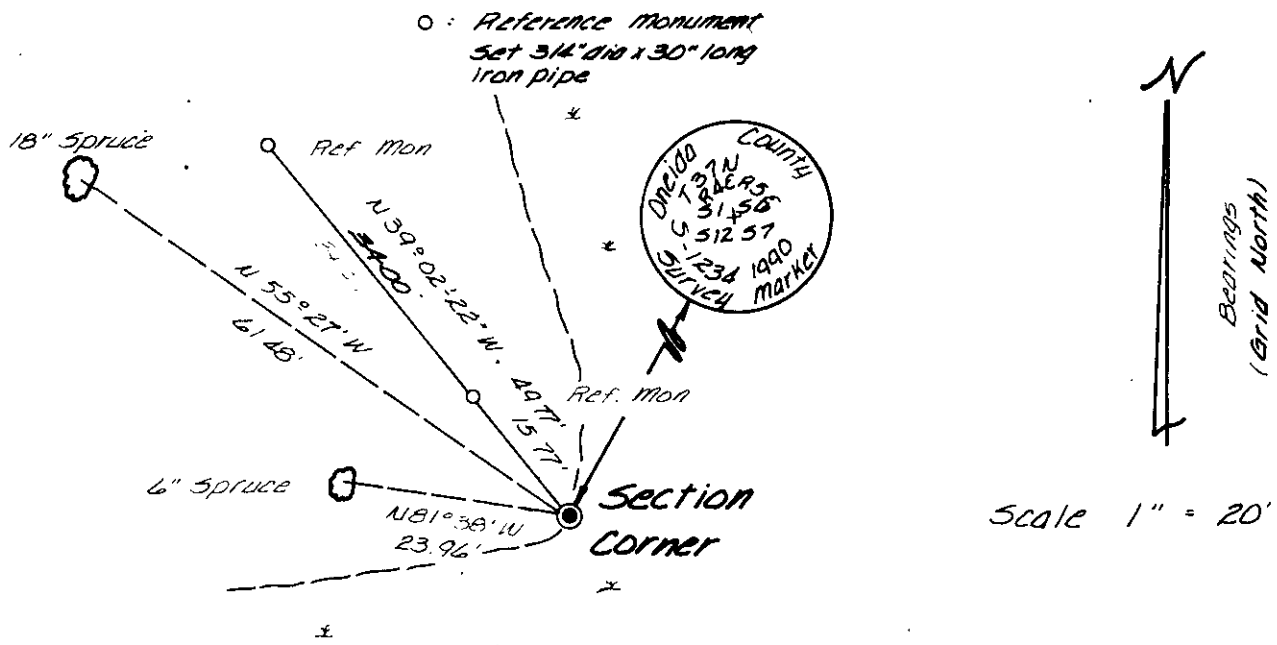
December 1937, Hall, Surveyor, records in C.C.C. notes book 11, Pg. 9 that a post was recovered for corner and original bearing tree stump of a 14" Pine and a mound where birch grew, no other trees near.

January 12, 1939 - Hall, Surveyor, referenced the Corner by a new bearing tree: 24" W. Pine (stump), N43°W, 0.289 chains.

March 29, 1990 - James D. Rein, R.L.S., recovered a 3/4" iron pipe witnessed by a squared post with Aluminum Tag. No bearing trees found. Set Oneida County Plastic Post 1' NE. See detail sketch below for reference ties.

Note: Corner is located in margin of flowage area of Willow Reservoir.

(c) (d) (e) Plan view of corner with ties to at least 4 witness monuments. If in disagreement with previously established corner, show the distances between the two corners and also indicate the ties to the disputed corner.



(i) I, James D. Rein, Registered Land Surveyor No. 1234  
(type or print name) certify that the corner location on this record was determined by me or under my direction and control and that this U.S. Public Land Survey Monument Record is correct and complete to the best of my knowledge and belief.

James D. Rein  
Signature

March 30th, 1990  
Date



Index No. E-25

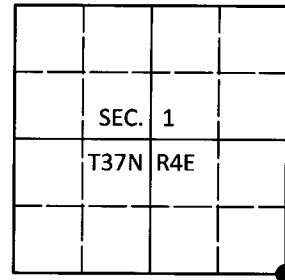
3704010060

**U.S. PUBLIC LAND SURVEY MONUMENT RECORD**

Note: This form is intended and designed to fulfill all requirements of Wisconsin Administrative Code, Chapter A-E 7.08 U.S. Public Land Survey Monument Record (3)(a-i).

(a) CORNER LOCATION  
 Cor. of Secs. 1, 6, 7 & 12  
 Township 37 North  
 Range 4 & 5 East of the 4th P.M.  
 Town of Lynne/Little Rice  
 County of Oneida

WISCORS - Oneida County  
 N: 194,159.40 USft  
 E: 133,748.44 USft  
 Datum: NAD 83(2011)  
 GNSS Method: Real-Time Network  
 GNSS Control: WISCORS VRS



(b) HISTORY OF ORIGINAL CORNER ESTABLISHMENT

Original Surveyor: \_\_\_\_\_ Original Accessories: \_\_\_\_\_

Date of Survey \_\_\_\_\_ Commenced: \_\_\_\_\_  
 Completed: \_\_\_\_\_

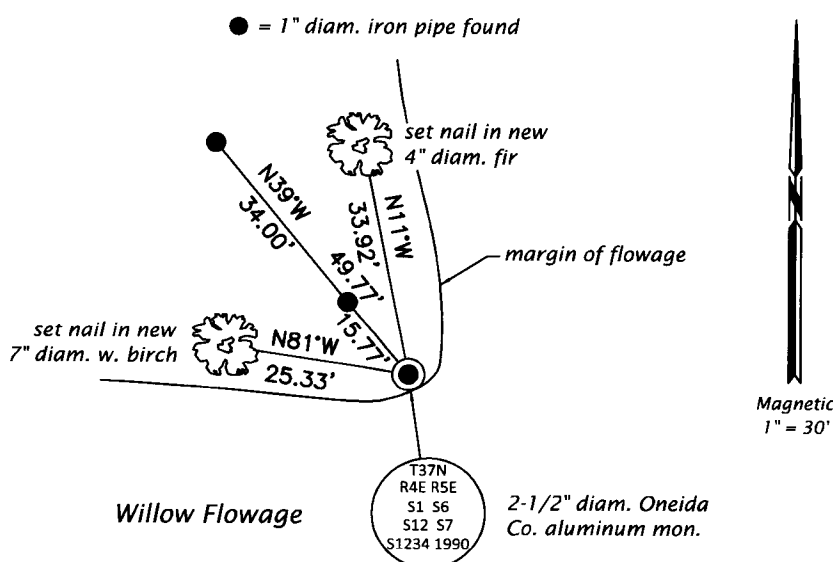
(b)(f)(g)(h) Description of monument found at this corner and if it was accepted, state all evidence (material, testimonial, occupational, plats, records, other monuments) used as a basis for accepting. If not accepted or if nothing was found, state evidence used as basis for establishing location. If re-established through lost corner proportionate methods, indicate all monuments, distances and directions used to establish. Indicate type of monument and sign post found or set.

*This is a perpetuation of a previous USPLS Monument Record by James D. Rein, RLS dated March 30, 1990 and filed in the office of the Oneida County Register of Deeds. A complete history of the corner can be found on the previous monument record. I accept the previous location as a true and faithful perpetuation or reestablishment of the original corner location and further perpetuate it as follows.*

*May 30, 2017: Jeff Austin visited the corner and recovered the record monument, a 2-1/2" diam. aluminum pipe with a 3-1/4" diam. Oneida Co. aluminum cap projecting 6" above the ground surface. On this date, the cap was submerged 1.5 ft. beneath the water surface of the Willow Flowage. Rein's 6" spruce is gone; his 18" spruce is standing dead. Accessories were found or established as shown below. A white vinyl sign post was found Northeast, 1 ft.*

*The coordinate value shown has been verified by at least one of the following methods: 1) comparison to a previously GPS determined published value; 2) the value is the average of two or more GPS observations at a markedly different time; 3) one or more distances were measured back to the GPS observed corner from temporary GPS observed offset locations.*

(c)(d)(e) Plan view of corner with ties to at least 4 witness monuments. If in disagreement with previously established corner, show the distances between the two corners and also indicate the ties to the disputed.

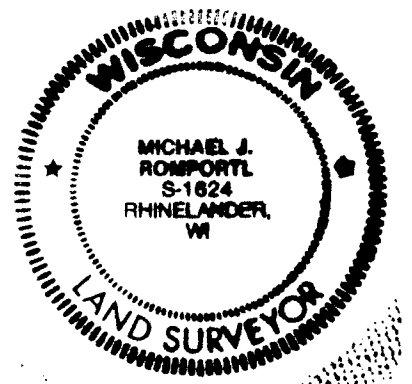


REGISTER OF DEEDS OFFICE  
 ONEIDA COUNTY  
 FILED

JUL 11 2017

AT \_\_\_\_\_ O'CLOCK \_\_\_\_\_ M  
 KYLE J. FRANSON  
 REGISTER OF DEEDS

Magnetic  
 1" = 30'



(i) I, Michael J. Romportl, Professional Land Surveyor No. S-1624, hereby certify that the corner location on this record was determined by me or under my direction and control and that this U.S. Public Land Survey Monument Record is correct and complete to the best of my knowledge and belief.

Michael J. Romportl 7/11/2017  
 Signature Date