

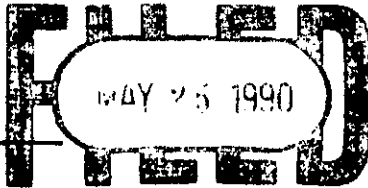
U.S. PUBLIC LAND SURVEY MONUMENT RECORD

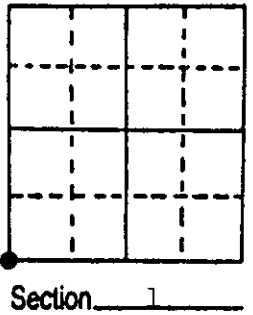
Note: This form is intended and designed to fulfill all requirements of Wisconsin Administrative Code, Chapter A-E 7.08 U.S. Public Land Survey Monument Record (3) (a) (b) (c) (d) (e) (f) (g) (h) (i). An additional sheet may be added if necessary to conform with said requirements.

(a) Corner location: Township 37 North
 Range 4 East/West

Town/City/Village Lynne

County Oneida

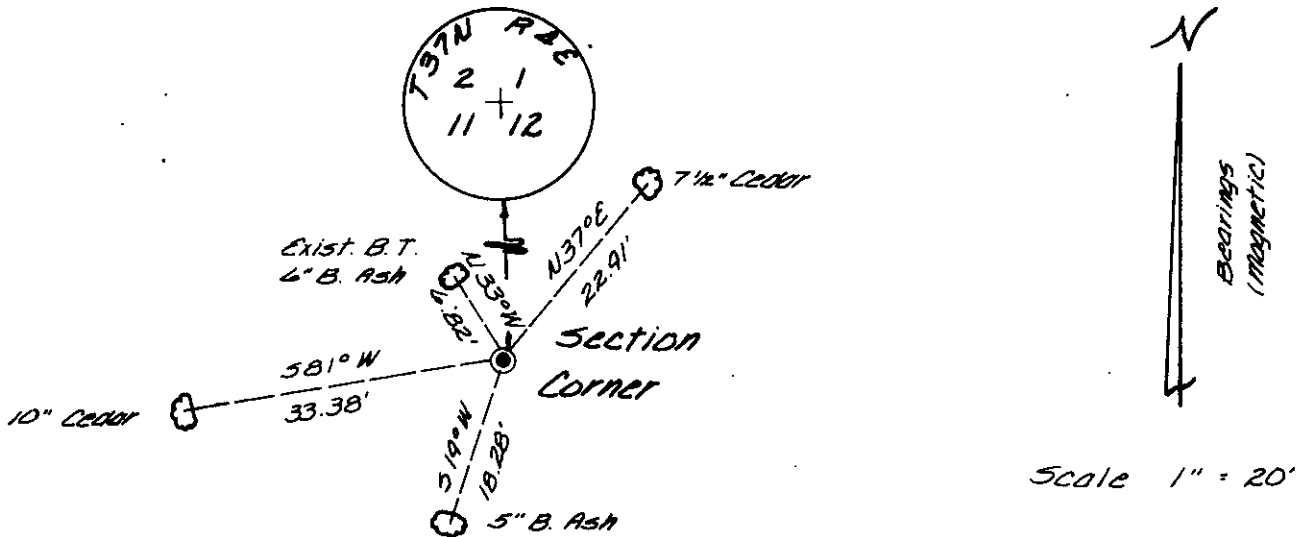
REGISTER OF DEEDS OFFICE
 ONEIDA COUNTY WIS

 At O'Clock M
THOMAS H. LEIGHTON
 REGISTER OF DEEDS



(b) (f) (g) (h) Description of monument found at this corner and if it was accepted, state all evidence (material, testimonial, occupational, plats, records, other monuments) used as a basis for accepting. If not accepted or if nothing was found, state evidence used as basis for establishing location. If reestablished through lost corner proportionate methods, indicate all monuments, distances and directions used to establish.

Oct. 1864 - Edward D. Palmer, Deputy Surveyor, set corner for Sections 1, 2, 11, and 12. Bearing trees: 12" Birch, N65°W, 30 links; 11" Cedar, N43°E, 18 links; 6" Cedar, S69°E, 29 links; 16" Birch, S38°W, 6 links.
 Dec. 9th, 1963 - William Stuth, Surveyor for Nekoosa Paper Co., identifies corner on map as being monumented with an iron pipe or cap. Length for South line of Section 1 is shown as 5,131.2 feet.
 March 29, 1990 - James D. Rein, R.L.S., recovered a brass capped 2" dia. iron pipe. Measured distance of 5129.44 feet along the south line of Section 1.

(c) (d) (e) Plan view of corner with ties to at least 4 witness monuments. If in disagreement with previously established corner, show the distances between the two corners and also indicate the ties to the disputed corner.



(i) I, James D. Rein, Registered Land Surveyor No. 1234
 (type or print name) certify that the corner location on this record was determined by me or under my direction and control and that this U.S. Public Land Survey Monument Record is correct and complete to the best of my knowledge and belief.



James D. Rein Signature March 30th, 1990 Date

Index No. F-21