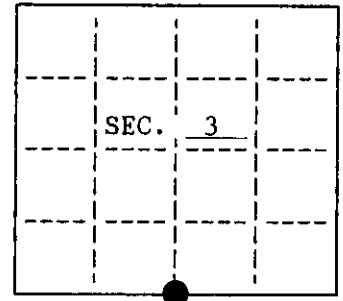


U. S. PUBLIC LAND SURVEY MONUMENT RECORD

Note: This form is intended and designed to fulfill all requirements of Wisconsin Administrative Code, Chapter A-8 7.08 U.S. Public Land Survey Monument Record (3)(a)(b)(c)(d)(e)(f)(g)(h)(i). An additional sheet may be added if necessary to conform with said requirements.

(a) CORNER LOCATION: State Plane Coordinates
 South 1/4 corner of Sec. 3 X _____
 Township 37 North Y _____
 Range 4 East Datum Base _____
 Town/City Lynne County of Oneida



(b) HISTORY OF ORIGINAL CORNER ESTABLISHMENT

Original Surveyor: Edward Palmer
 Date of Survey: Commenced October, 1864
 Completed October, 1864

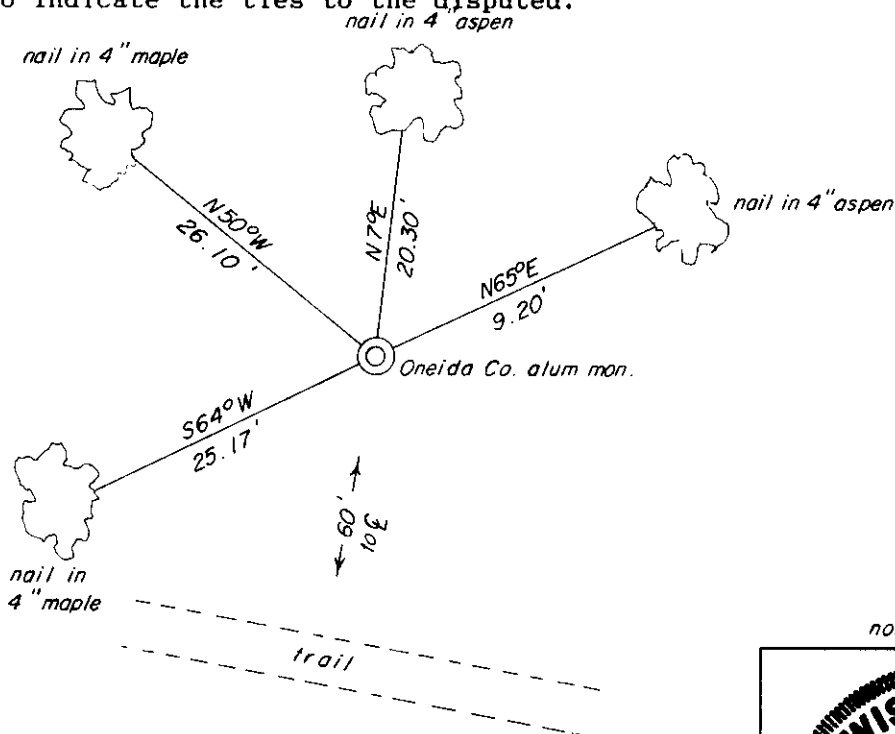
Original B.T.'S

10" Hemlock N20°W, 12 lks.
 12" W. Pine S37°E, 14 lks.

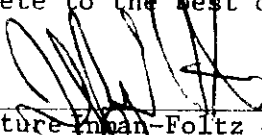
(b)(f)(g)(h) Description of monument found at this corner and if it was accepted, state all evidence (material, testimonial, occupational, plats, records, other monuments) used as a basis for accepting. If not accepted or if nothing was found, state evidence used as basis for establishing location. If reestablished through lost corner proportionate methods, indicate all monuments, distances and directions used to establish. Indicate type of monument and sign post found or set.

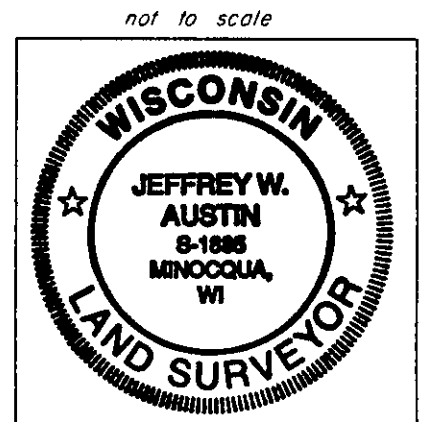
August 31, 1994 - I found no evidence of the original or any subsequent survey. I established this corner at the midpoint of a line connecting the southwest and southeast section corners of Section 3. The southeast section corner bears N87°59'00"E, 2748.74 feet. The southwest section corner bears S87°59'00"W, 2748.74 feet. I monumented this location with a 2-1/2"x 30" Oneida County Aluminum Monument witnessed as shown below. I set a plastic signpost southwest 1.5 feet.

(c)(d)(e) Plan view of corner with ties to at least 4 witness monuments. If in disagreement with previously established corner, show the distances between the two corners and also indicate the ties to the disputed.



(i) I, Jeffrey W. Austin, Registered Land Surveyor hereby certify that the corner location on this record was determined by me or under my direction and control and that this U.S. Public Land Survey Monument Record is correct and complete to the best of my knowledge and belief.

Signature:  Foltz & Associates, Inc. Date: 9-22-94



INDEX NO. E-15