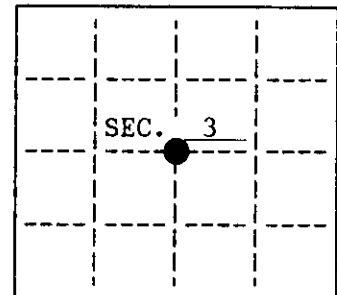


U.S. PUBLIC LAND SURVEY MONUMENT RECORD

Note: This form is intended and designed to fulfill all requirements of Wisconsin Administrative Code, Chapter A-8 7.08 U.S. Public Land Survey Monument Record (3)(a)(b)(c)(d)(e)(f)(g)(h)(i). An additional sheet may be added if necessary to conform with said requirements.

(a) CORNER LOCATION: State Plane Coordinates
 Center 1/4 corner of Sec. 3 X _____
 Township 37 North Y _____
 Range 4 East Datum Base _____
 Town/City Lynne County of Oneida



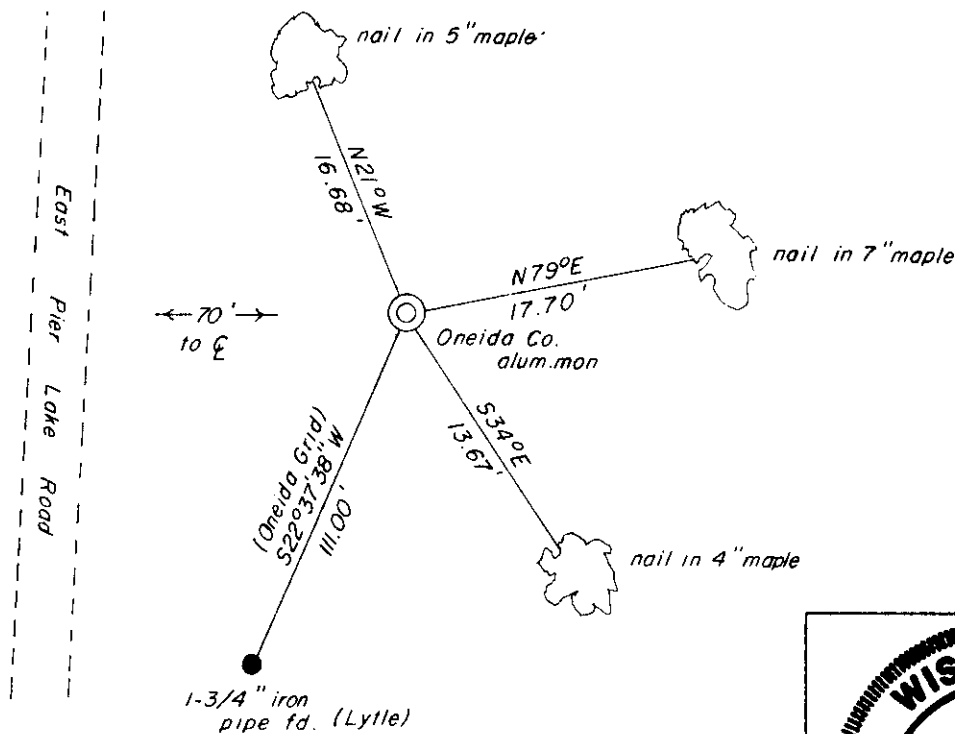
(b) HISTORY OF ORIGINAL CORNER ESTABLISHMENT Original B.T.'S
 Original Surveyor: None
 Date of Survey: Commenced _____
 Completed _____

(b)(f)(g)(h) Description of monument found at this corner and if it was accepted, state all evidence (material, testimonial, occupational, plats, records, other monuments) used as a basis for accepting. If not accepted or if nothing was found, state evidence used as basis for establishing location. If reestablished through lost corner proportionate methods, indicate all monuments, distances and directions used to establish. Indicate type of monument and sign post found or set.

August 29, 1994 - I established this corner at the intersection of the centerlines of Section 3. I monumented this location with a 2-1/2"x 30" Oneida County Aluminum Monument witnessed as shown below. I set a plastic signpost northeast 1.5 feet.

Notes by Lytle dated July, 1943 indicate he established the Center 1/4 Corner of Section 3 by traversing southerly from the East Meander Corner on the north line of Section 3 and setting the corner based on the GLO plat dimensions. I do not accept his location due to his use of improper procedures.

(c)(d)(e) Plan view of corner with ties to at least 4 witness monuments. If in disagreement with previously established corner, show the distances between the two corners and also indicate the ties to the disputed.



(i) I, Jeffrey W. Austin, Registered Land Surveyor hereby certify that the corner location on this record was determined by me or under my direction and control and that this U.S. Public Land Survey Monument Record is correct and complete to the best of my knowledge and belief.

[Handwritten Signature]

9-27-94

Signature John Foltz & Associates, Inc. Date _____



INDEX NO. C-15

3704032020