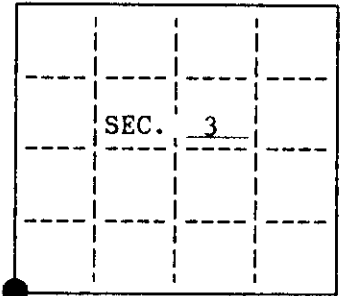


**U. S. PUBLIC LAND SURVEY MONUMENT RECORD**

Note: This form is intended and designed to fulfill all requirements of Wisconsin Administrative Code, Chapter A-E 7.08 U.S. Public Land Survey Monument Record (3)(a)(b)(c)(d)(e)(f)(g)(h)(i). An additional sheet may be added if necessary to conform with said requirements.

(a) CORNER LOCATION: State Plane Coordinates  
SW corner of Sec. 3 X \_\_\_\_\_  
 Township 37 North Y \_\_\_\_\_  
 Range 4 East Datum Base \_\_\_\_\_  
 Town/City Lynne County of Oneida



(b) HISTORY OF ORIGINAL CORNER ESTABLISHMENT

Original Surveyor: Edward Palmer  
 Date of Survey: Commenced October, 1864  
 Completed October, 1864

Original B.T.'S

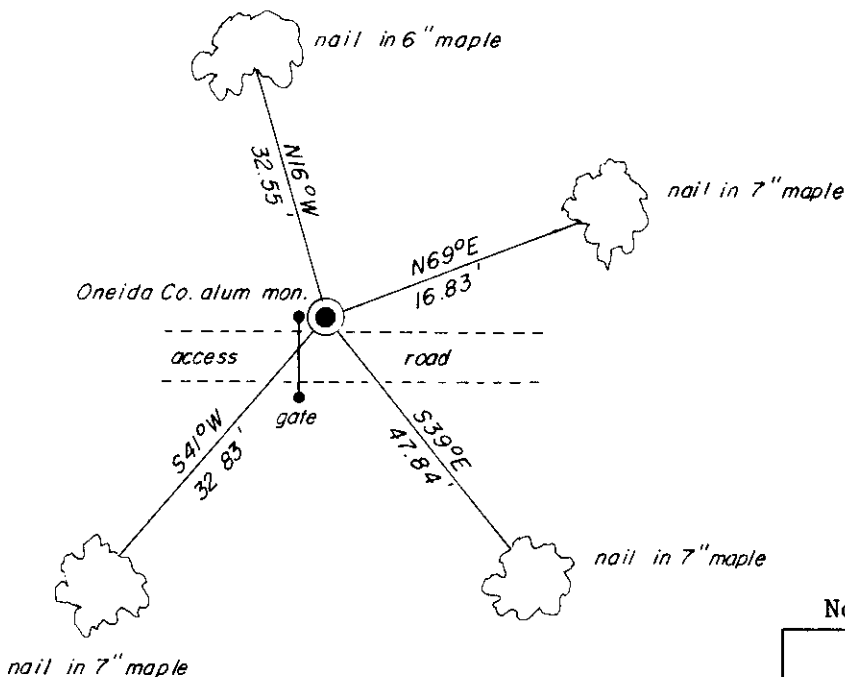
- Hemlock 12 N72°W, 24 lks.
- Sugar 9 N67°E, 19 lks.
- Hemlock 14 S58°E, 30 lks.
- Sugar 10 S39°W, 42 lks.

(b)(f)(g)(h) Description of monument found at this corner and if it was accepted, state all evidence (material, testimonial, occupational, plats, records, other monuments) used as a basis for accepting. If not accepted or if nothing was found, state evidence used as basis for establishing location. If reestablished through lost corner proportionate methods, indicate all monuments, distances and directions used to establish. Indicate type of monument and sign post found or set.

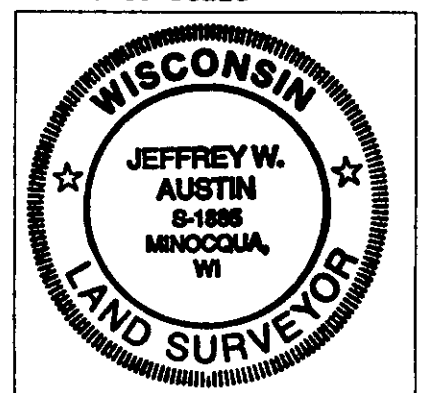
April, 1964 - Survey by William Cameron indicates section corner is in place 2627.5 feet north of the West 1/4 Corner of Section 10.

May 24, 1994 - I found and accepted Cameron's 1-3/4" iron pipe. The West 1/4 Corner of Section 10 bears S1°26'16"E, 2627.58 feet. I replaced Cameron's pipe with a 2-1/2" x 30" Oneida County Aluminum Monument 3" below grade witnessed as shown below. I found a plastic signpost Northeast 1.5 feet.

(c)(d)(e) Plan view of corner with ties to at least 4 witness monuments. If in disagreement with previously established corner, show the distances between the two corners and also indicate the ties to the disputed.



Not to Scale



(i) I, Jeffrey W. Austin, Registered Land Surveyor hereby certify that the corner location on this record was determined by me or under my direction and control and that this U.S. Public Land Survey Monument Record is correct and complete to the best of my knowledge and belief.

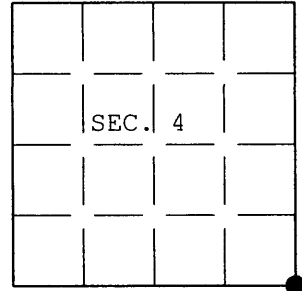
Signature [Handwritten Signature] Date 9-27-94  
 Foltz & Associates, Inc.

INDEX NO. E-13

**U.S. PUBLIC LAND SURVEY MONUMENT RECORD**

Note: This form is intended and designed to fulfill all requirements of Wisconsin Administrative Code, Chapter A-E 7.08 U.S. Public Land Survey Monument Record (3) (a) (b) (c) (d) (e) (f) (g) (h) (i). An additional sheet may be added if necessary to conform with said requirements.

(a) CORNER LOCATION: Plane Coordinates  
 Cor. of Secs. 4, 3, 9 & 10 X:  
 Township 37 North Y:  
 Range 4 East of the 4th P.M. Datum:  
 Town of Lynne County of Oneida



(b) HISTORY OF ORIGINAL CORNER ESTABLISHMENT

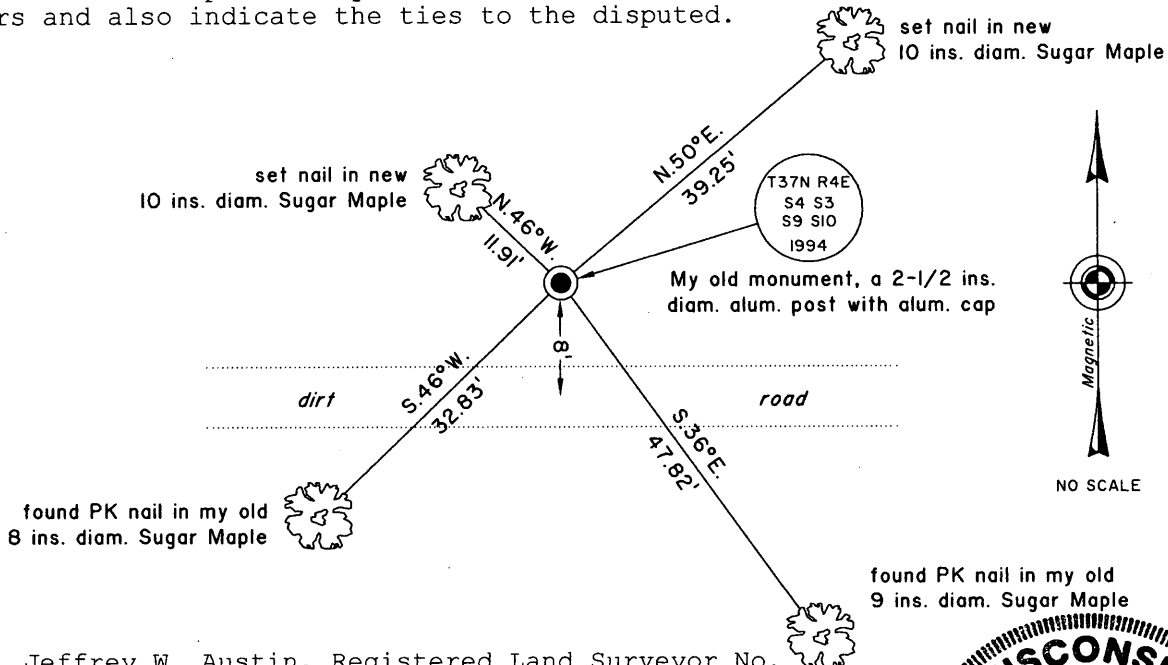
Original Surveyor: Palmer, Edward D. Original Accessories:  
 Date of Survey: Commenced Oct. 1864 Hemlock 12" N.72°W., 24 lks.  
 Completed Oct. 1864 Sugar 9" N.67°E., 19 lks.  
 Hemlock 14" S.58°E., 30 lks.  
 Sugar 10" S.39°W., 42 lks.

(b)(f)(g)(h) Description of monument found at this corner and if it was accepted, state all evidence (material, testimonial, occupational, plats, records, other monuments) used as a basis for accepting. If not accepted or if nothing was found, state evidence used as basis for establishing location. If re-established through lost corner proportionate methods, indicate all monuments, distances and directions used to establish. Indicate type of monument and sign post found or set.

27 Sept. 1994: USPLS Monument Record prepared by myself and filed in the office of the Oneida County Register of Deeds. Set Oneida County aluminum monument based on previously perpetuated location.

25 June 2004: I found and accepted my previous monument, a 2-1/2 ins. diam. aluminum post, set 3 ins. below the ground surface with Oneida County aluminum cap marked as shown below. Both of my Northerly bearing trees have been cut. I found and established accessories as shown below and found a white plastic sign post bearing Northeast, 1-1/2 ft. dist.

(c)(d)(e) Plan view of corner with ties to at least 4 witness monuments. If in disagreement with previously established corner, show the distances between the two corners and also indicate the ties to the disputed.



(i) I, Jeffrey W. Austin, Registered Land Surveyor No. S-1885, hereby certify upon honor that the corner location on this record was determined by me or under my direction and control and that this U.S. Public Land Survey Monument Record is correct and complete to the best of my knowledge and belief.

Signature

Date

9 FEB 2005

