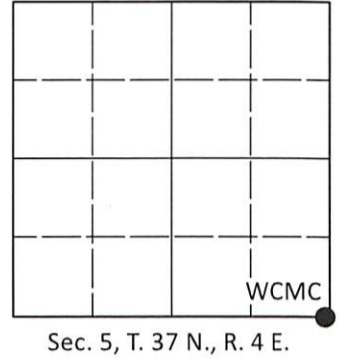


U.S. PUBLIC LAND SURVEY MONUMENT RECORD

Note: This form is intended and designed to fulfill all requirements of Wisconsin Administrative Code, Chapter A-E 7.08 U.S. Public Land Survey Monument Record (3)(a-i).

(a) CORNER LOCATION
 Wit. Meander Cor. of Secs. 5 & 8
 Township 37 North
 Range 4 East of the 4th P.M.
 Town of Lynne
 County of Oneida

WISCRS - Oneida County
 N: 193,796.299 USft
 E: 112,019.830 USft
 Datum: NAD 83(2011) ep. 2010.00
 GNSS Method: RTN - Offset
 GNSS Control: WISCORS VRS



(b)(f)(g)(h) Description of monument found at this corner and if it was accepted, state all evidence (material, testimonial, occupational, plats, records, other monuments) used as a basis for accepting. If not accepted or if nothing was found, state evidence used as basis for establishing location. If re-established through lost corner proportionate methods, indicate all monuments, distances and directions used to establish. Indicate type of monument and sign post found or set.

Oct. 4-13, 1864: GLO survey by Edward D. Palmer, U.S. Deputy Surveyor. East true line between Secs. 5 and 8, 74.75 chs. set a wood post witnessed by: cedar 12 N85°W, 90 lks.; birch 10 N60°E, 40 lks.

Aug. 31, 1955: On OCS Map No. C-663, Nicholas M. Rowinski identifies the corner as a 2" iron pipe. He also positions the section corner in the lake 427.2' East of this corner. In reviewing the highly abbreviated field notes of this survey, I believe it's clear that Rowinski thought he located GLO stump evidence at the end of the 6.00 ch. offset line (Sec. 8+9) run from the South by GLO. This is at odds with the GLO notes as they indicate the meander cor. was set later while running true line from the West. The dimensions on his map make it clear that he proportioned the section corner in the lake between this corner and the section corner a mile to the East. As there was not a measurement across the lake by GLO, he assumed the record mile to be 80.00 chs.

Nov. - Dec., 1966: Field notes by William S. Cameron identify corner as "hub set at post point for MC." In addition, "Found R's MC on North line of Sec. 8 scribed pop. post only. Sec. 5, Sec. 8, MC" Cameron tied Rowinski's MC as he traversed by, but as it was 300 feet from the lake, he apparently didn't realize it was the meander corner. Cameron's final map is OCS Map No. B-740: Set 2" iron pipe - 4" maple N85°W, 27.3'; 10" twin w. birch S52°W, 39.2'

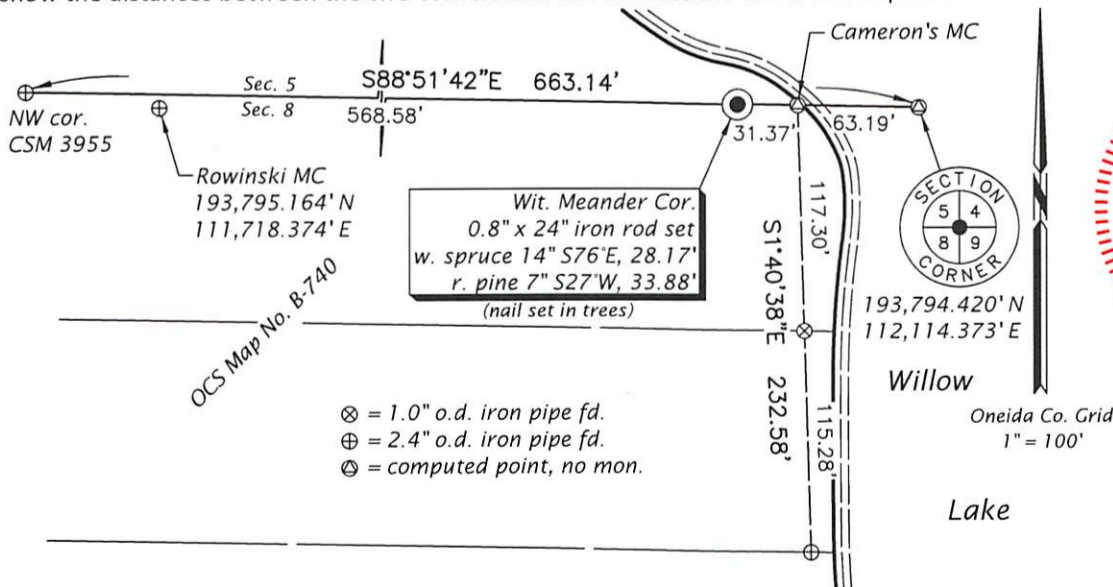
Oct. 15, 2001: On Certified Survey Map No. 2626, David L. Osterbrink, PLS found a 2" iron pipe.

Sep. 11, 2011: On Certified Survey Map No. 3955, Timothy G. Vreeland, PLS found a 2.375" o.d. iron pipe.

Sep. 27, 2021: I found the record monument, a 2.4" diam. iron pipe with steel fence post adjacent. The monument is leaning considerably and close to falling into the lake. As detailed below, I retraced Cameron's survey to reposition the corner point and set a witness corner in a secure location. Due to the rocky nature of the area, I was unable to set an aluminum monument or sign post. To position the section corner in the lake, I follow Rowinski's logic but rather than proportion across the lake, I terminate the section line as surveyed by Cameron at a point 6.00 chains (GLO record) from the iron pipe that appears to have been set by Rowinski. Being that GLO failed to return a distance across the lake, I believe proportioning against an assumed record is not the best solution.

The coordinate value shown has been determined by traversing from two or more offset points, the coordinates of which are the result of GNSS observations.

(c)(d)(e) Plan view of corner with ties to at least 4 witness monuments. If in disagreement with previously established corner, show the distances between the two corners and also indicate the ties to the disputed.



REGISTER OF DEEDS OFFICE
 ONEIDA COUNTY
 FILED

APR 21 2022

KYLE J. FRANSON
 REGISTER OF DEEDS

(i) I, Jeffrey W. Austin, Professional Land Surveyor No. S-1885, hereby certify that the corner location on this record was determined by me or under my direction and control and that this U.S. Public Land Survey Monument Record is correct and complete to the best of my knowledge and belief.

(Handwritten Signature)
 Signature

APR. 10, 2022
 Date

3704050001 (INDEX NO. E-8,9)