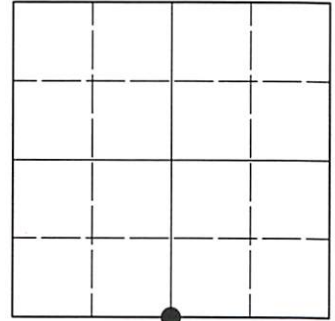


U.S. PUBLIC LAND SURVEY MONUMENT RECORD

Note: This form is intended and designed to fulfill all requirements of Wisconsin Administrative Code, Chapter A-E 7.08 U.S. Public Land Survey Monument Record (3)(a-i).

(a) CORNER LOCATION
 1/4 Cor. of Secs. 6 & 7
 Township 37 North
 Range 4 East of the 4th P.M.
 Town of Lynne
 County of Oneida

WISCRS - Oneida County
 N: 193,721.631 USft
 E: 105,190.346 USft
 Datum: NAD 83(2011) ep. 2010.00
 GNSS Method: RTN - Direct
 GNSS Control: WISCRS VRS



Sec. 6, T. 37 N., R. 4 E.

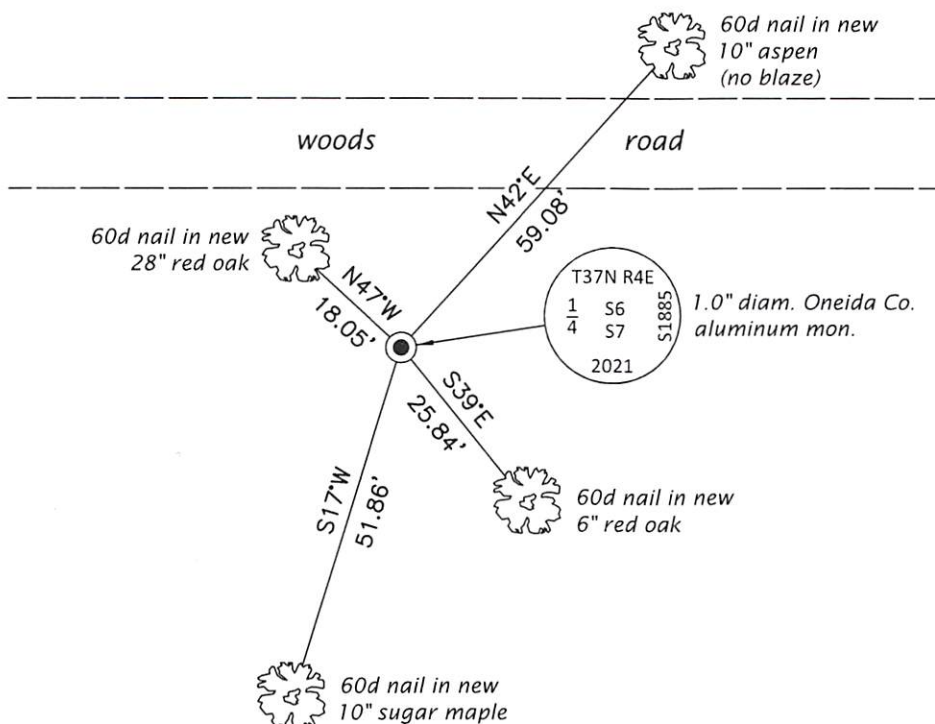
(b)(f)(g)(h) Description of monument found at this corner and if it was accepted, state all evidence (material, testimonial, occupational, plats, records, other monuments) used as a basis for accepting. If not accepted or if nothing was found, state evidence used as basis for establishing location. If re-established through lost corner proportionate methods, indicate all monuments, distances and directions used to establish. Indicate type of monument and sign post found or set.

Oct. 4-13, 1864: GLO survey by Edward D. Palmer, U.S. Deputy Surveyor. S89°54'E corrected between Secs. 6 and 7, at 39.45 chs. set a wood post witnessed by: tamarack 9 N37°W, 29 lks.; tamarack 12 S50°E, 19 lks.

Oct. 26, 2021: An extensive search for prior survey evidence was performed without success. The lowland noted on this mile by GLO does not exist. As a result, I determine the corner to be lost and position it by proportionate measure as detailed on the remainder of this record. At the corner point, I set a 1.0" diam., 30" long aluminum pipe with a 2.5" diam. Oneida County aluminum cap flush with the ground surface. An orange DEEP-1 magnet was set adjacent to the monument. Accessories were established as indicated below. A white vinyl sign post bears Southeast, 0.8 ft. dist.

The coordinate value shown has been verified by averaging two or more GNSS observations at markedly different times.

(c)(d)(e) Plan view of corner with ties to at least 4 witness monuments. If in disagreement with previously established corner, show the distances between the two corners and also indicate the ties to the disputed.




Magnetic
1" = 30'

REGISTER OF DEEDS OFFICE
ONEIDA COUNTY
FILED

APR 21 2022

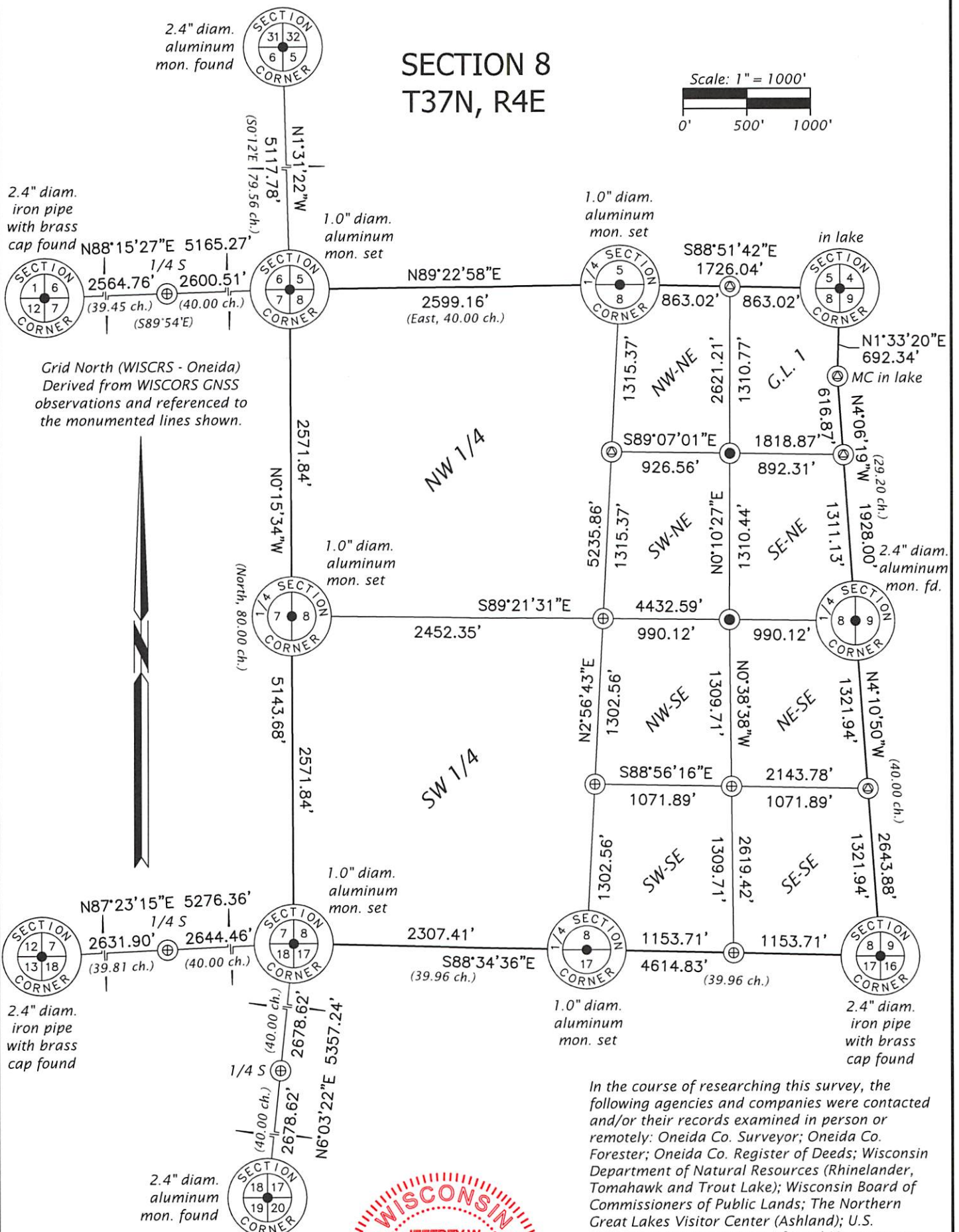
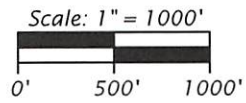
KYLE J. FRANSON
REGISTER OF DEEDS

(i) I, Jeffrey W. Austin, Professional Land Surveyor No. S-1885, hereby certify that the corner location on this record was determined by me or under my direction and control and that this U.S. Public Land Survey Monument Record is correct and complete to the best of my knowledge and belief.


Signature

APR. 10, 2022
Date

SECTION 8 T37N, R4E



In the course of researching this survey, the following agencies and companies were contacted and/or their records examined in person or remotely: Oneida Co. Surveyor; Oneida Co. Forester; Oneida Co. Register of Deeds; Wisconsin Department of Natural Resources (Rhineland, Tomahawk and Trout Lake); Wisconsin Board of Commissioners of Public Lands; The Northern Great Lakes Visitor Center (Ashland); U.S. Geological Survey; Bureau of Land Management; Genisot & Associates, Inc.; Wilderness Surveying, Inc.; Maines & Associates, S.C.

Although unsuccessful, a letter was sent to adjoining landowners requesting copies of private survey information in their possession.

Professional Land Surveyor No. S-1885
Date: APR 10, 2022



REGISTER OF DEEDS OFFICE
ONEIDA COUNTY
FILED

APR 21 2022

KYLE J. FRANSON
REGISTER OF DEEDS

- LEGEND
- = 0.8" diam. iron rod set
 - ⊙ = computed point, no monument
 - ⊕ = 1.0" diam. aluminum mon. set
 - () = GLO record measurement