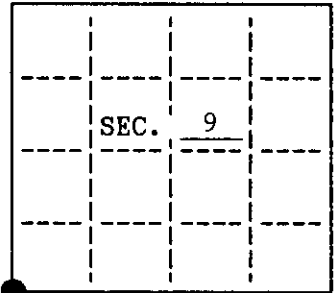


U.S. PUBLIC LAND SURVEY MONUMENT RECORD

Note: This form is intended and designed to fulfill all requirements of Wisconsin Administrative Code, Chapter A-8 7.08 U.S. Public Land Survey Monument Record (3)(a)(b)(c)(d)(e)(f)(g)(h)(i). An additional sheet may be added if necessary to conform with said requirements.

(a) CORNER LOCATION: State Plane Coordinates
 _____ SW corner of Sec. 9 _____ X _____
 Township 37 North Y _____
 Range 4 East Datum Base _____
 Town/~~XXX~~ Lynne County of Oneida



(b) HISTORY OF ORIGINAL CORNER ESTABLISHMENT

Original Surveyor: Edward Palmer
 Date of Survey: Commenced Oct. 1864
 Completed Oct. 1864

Original B.T.'S
 Birch 17 N70°W, 24 LKS.
 Birch 10 N20°E, 10 LKS.
 Elm 12 S35°E, 25 LKS.
 Sugar 5 S40°W, 22 LKS.

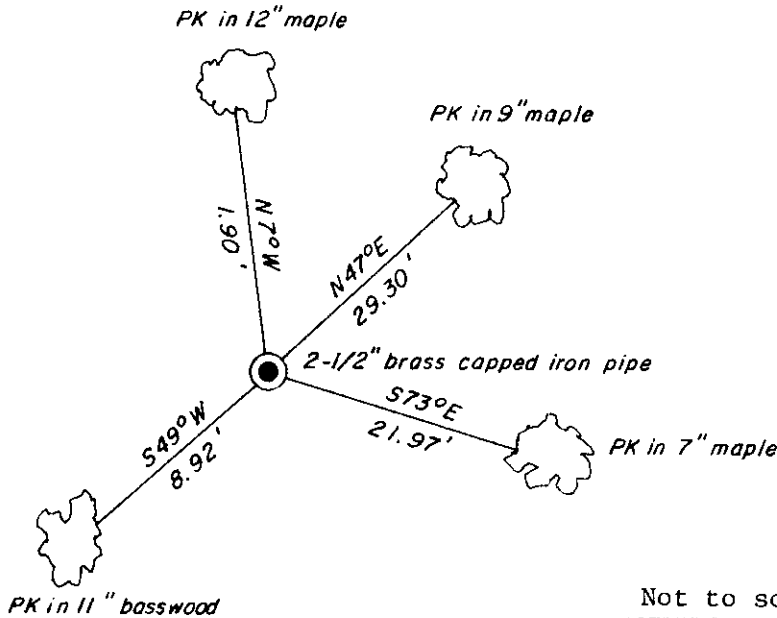
(b)(f)(g)(h) Description of monument found at this corner and if it was accepted, state all evidence (material, testimonial, occupational, plats, records, other monuments) used as a basis for accepting. If not accepted or if nothing was found, state evidence used as a basis for establishing location. If reestablished through lost corner proportionate methods, indicate all monuments, distances and directions used to establish. Indicate type of monument and sign post found or set.

August, 1955: Survey by Nicholas Rowinski indicates Corner is in place with no description.

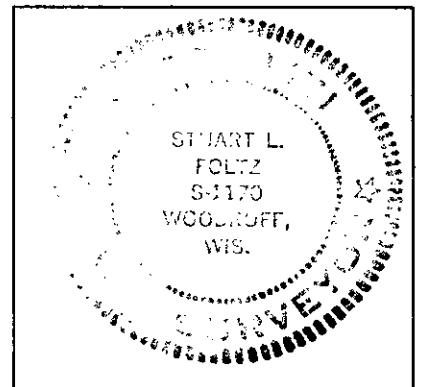
April, 1994: OCS Map L-1347 by Robert Fergot indicates Corner is in place with no description.

January 19, 1995: I found and accepted a 2 1/2" dia. brass capped iron pipe. This location is the Corner used by Fergot and Rowinski based on measurements to adjacent Corners. I witnessed the Corner as shown below and set a plastic sign post Southeast, 2 feet.

(c)(d)(e) Plan view of corner with ties to at least 4 witness monuments. If in disagreement with previously established corner, show the distances between the two corners and also indicate the ties to the disputed.



Not to scale



(i) I, Stuart L. Foltz, Registered Land Surveyor hereby certify that the corner location on this record was determined by me or under my direction and control and that this U.S. Public Land Survey Monument Record is correct and complete to the best of my knowledge and belief.

Stuart L. Foltz
 Signature

2/15/95
 Date

INDEX NO. J-9