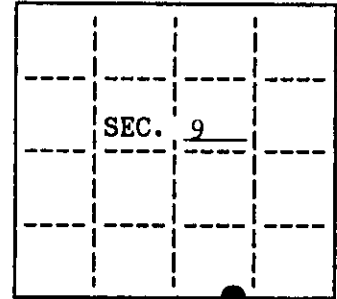


U.S. PUBLIC LAND SURVEY MONUMENT RECORD

Note: This form is intended and designed to fulfill all requirements of Wisconsin Administrative Code, Chapter A-8 7.08 U.S. Public Land Survey Monument Record (3)(a)(b)(c)(d)(e)(f)(g)(h)(i). An additional sheet may be added if necessary to conform with said requirements.

(a) CORNER LOCATION: State Plane Coordinates
 Meander corner of Sec. 9&16 X _____
 Township 37 North Y _____
 Range 4 East Datum Base _____
 Town/City Lynne County of Oneida

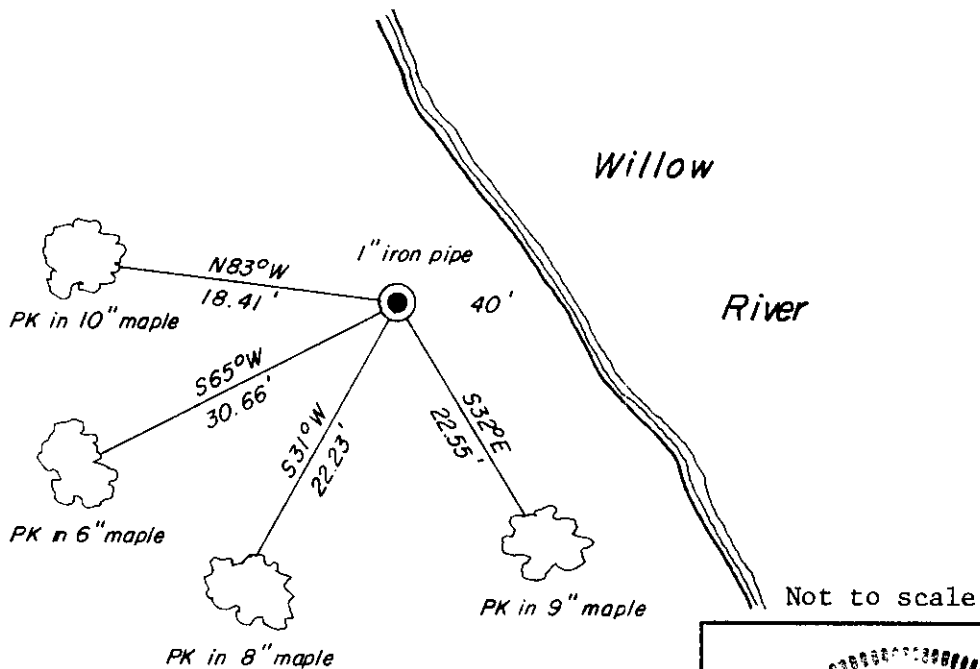


(b) HISTORY OF ORIGINAL CORNER ESTABLISHMENT
 Original Surveyor: None Original B.T.'S _____
 Date of Survey: Commenced _____
 Completed _____

(b)(f)(g)(h) Description of monument found at this corner and if it was accepted, state all evidence (material, testimonial, occupational, plats, records, other monuments) used as a basis for accepting. If not accepted or if nothing was found, state evidence used as basis for establishing location. If reestablished through lost corner proportionate methods, indicate all monuments, distances and directions used to establish. Indicate type of monument and sign post found or set.

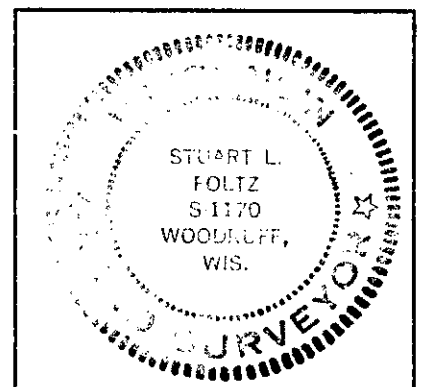
January 23, 1995: I set a 1" dia. iron pipe near the Westerly bank of the Willow River on a line connecting the South 1/4 Corner and Southeast Section Corner. The Section Corner bears N86°26'33"E, 1838.70'. The 1/4 Corner bears S86°26'33"W, 1071.28'. I witnessed the Corner as shown below. I was unable to set a capped monument or plastic sign post due to frost conditions.

(c)(d)(e) Plan view of corner with ties to at least 4 witness monuments. If in disagreement with previously established corner, show the distances between the two corners and also indicate the ties to the disputed.



(i) I, Stuart L. Foltz, Registered Land Surveyor hereby certify that the corner location on this record was determined by me or under my direction and control and that this U.S. Public Land Survey Monument Record is correct and complete to the best of my knowledge and belief.

Stuart L. Foltz Signature 2/15/95 Date



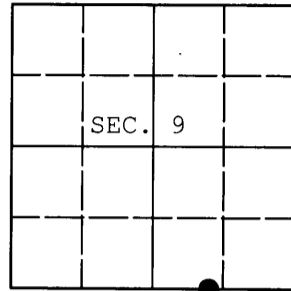
INDEX NO. J-11,12

3704090012

U.S. PUBLIC LAND SURVEY MONUMENT RECORD

Note: This form is intended and designed to fulfill all requirements of Wisconsin Administrative Code, Chapter A-E 7.08 U.S. Public Land Survey Monument Record (3) (a) (b) (c) (d) (e) (f) (g) (h) (i). An additional sheet may be added if necessary to conform with said requirements.

(a) CORNER LOCATION: WISCRS (Oneida County)
Meander Cor. of Secs. 9 & 16 N: 188,715.58 USft
Township 37 North E: 116,122.43 USft
Range 4 East of the 4th P.M. Datum: NAD 1983(2011)
Town of Lynne County of Oneida



(b) HISTORY OF ORIGINAL CORNER ESTABLISHMENT

Original Surveyor: Original Accessories:
Date of Survey: Commenced:
Completed:

(b)(f)(g)(h) Description of monument found at this corner and if it was accepted, state all evidence (material, testimonial, occupational, plats, records, other monuments) used as a basis for accepting. If not accepted or if nothing was found, state evidence used as basis for establishing location. If re-established through lost corner proportionate methods, indicate all monuments, distances and directions used to establish. Indicate type of monument and sign post found or set.

NOTE: This is a perpetuation of a previous USPLS Monument Record by Stuart L. Foltz, RLS dated February 15, 1995 and filed in the office of the Oneida County Register of Deeds. A complete history of the corner can be found on the previous monument record. I accept the previous location as a true and faithful perpetuation or reestablishment of the original corner location and further perpetuate it as follows.

June 16, 2014: I found and accepted Foltz's monument, a 1" diam. iron pipe. Foltz's accessories were found in substantial agreement with his previous record and were not remeasured as the sole purpose of this work is to report the coordinates of the corner point.

The coordinates shown were derived from a direct RTN GPS observation referenced to the WISCORS network.

(c)(d)(e) Plan view of corner with ties to at least 4 witness monuments. If in disagreement with previously established corner, show the distances between the two corners and also indicate the ties to the disputed.

REGISTER OF DEEDS OFFICE
ONEIDA COUNTY
FILED

JUL 03 2014

AT O'CLOCK M
KYLE J. FRANSON
REGISTER OF DEEDS



(i) I, Jeffrey W. Austin, Registered Land Surveyor No. S-1885, hereby certify that the corner location on this record was determined by me or under my direction and control and that this U.S. Public Land Survey Monument Record is correct and complete to the best of my knowledge and belief.

Signature

Date

JUNE 28, 2014

3704090012 (INDEX NO. J-11,12)