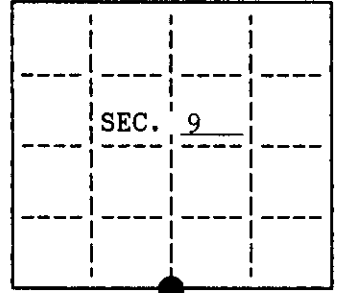


U.S. PUBLIC LAND SURVEY MONUMENT RECORD

Note: This form is intended and designed to fulfill all requirements of Wisconsin Administrative Code, Chapter A-8 7.08 U.S. Public Land Survey Monument Record (3)(a)(b)(c)(d)(e)(f)(g)(h)(i). An additional sheet may be added if necessary to conform with said requirements.

(a) CORNER LOCATION: State Plane Coordinates
 South $\frac{1}{4}$ corner of Sec. 9 X _____
 Township 37 North Y _____
 Range 4 East Datum Base _____
 Town/City Lynne County of Oneida



(b) HISTORY OF ORIGINAL CORNER ESTABLISHMENT Original B.T.'S
 Original Surveyor: Edward Palmer
 Date of Survey: Commenced Oct. 1864 Hemlock 12 N10°W, 6 LKS.
 Completed Oct. 1864 Hemlock 9 S25°W, 7 LKS.

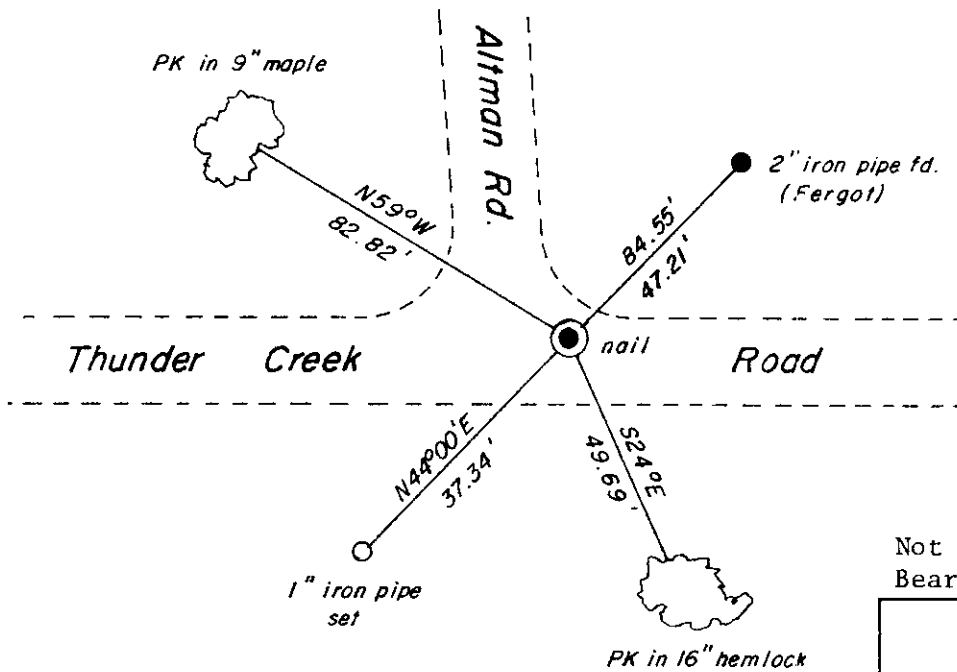
(b)(f)(g)(h) Description of monument found at this corner and if it was accepted, state all evidence (material, testimonial, occupational, plats, records, other monuments) used as a basis for accepting. If not accepted or if nothing was found, state evidence used as basis for establishing location. If reestablished through lost corner proportionate methods, indicate all monuments, distances and directions used to establish. Indicate type of monument and sign post found or set.

August, 1955 = Survey by Nicholas Rowinski indicates Corner is in place with no description.

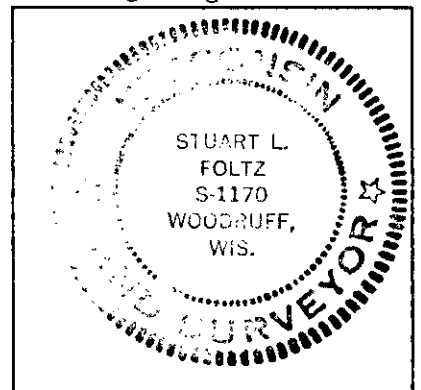
April, 1994 = OCS Map L-1347 by Robert Fergot indicates Corner is monumented with a 1"x24" PIN witnessed by a 2" pipe 33' North and 33' East.

January 19, 1995 = I found and accepted a 60 penny spike which is Fergot's location based on his Section exterior and the existing 2" dia. witness pipe. This location also fits Rowinski's Section exterior well. I witnessed the Corner as shown below. I was unable to set a capped monument due to frost conditions.

(c)(d)(e) Plan view of corner with ties to at least 4 witness monuments. If in disagreement with previously established corner, show the distances between the two corners and also indicate the ties to the disputed.



Not to scale
 Bearings magnetic



(i) I, Stuart L. Foltz, Registered Land Surveyor hereby certify that the corner location on this record was determined by me or under my direction and control and that this U.S. Public Land Survey Monument Record is correct and complete to the best of my knowledge and belief.

Stuart L. Foltz 2/15/95
 Signature Date

INDEX NO. J-11

3704090020