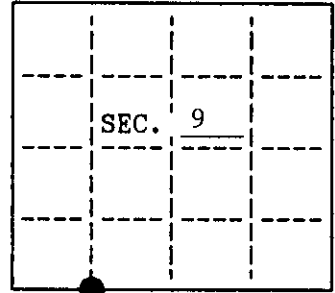


U.S. PUBLIC LAND SURVEY MONUMENT RECORD

Note: This form is intended and designed to fulfill all requirements of Wisconsin Administrative Code, Chapter A-E 7.08 U.S. Public Land Survey Monument Record (3)(a)(b)(c)(d)(e)(f)(g)(h)(i). An additional sheet may be added if necessary to conform with said requirements.

(a) CORNER LOCATION: State Plane Coordinates
 West 1/16 corner of Sec. 9&16 X _____
 Township 37 North Y _____
 Range 4 East Datum Base _____
 Town/City Lynne County of Oneida

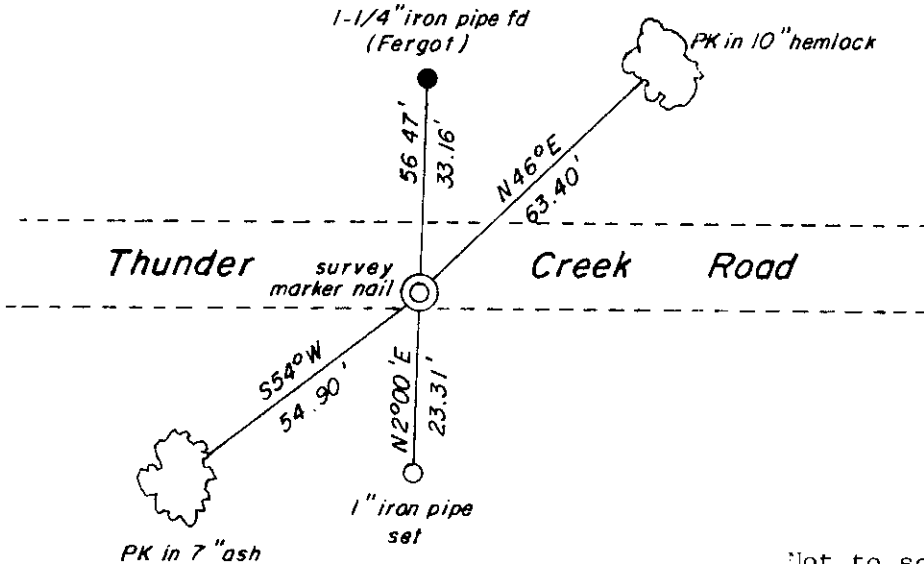


(b) HISTORY OF ORIGINAL CORNER ESTABLISHMENT
 Original Surveyor: Robert Fergot Original B.T.'S
 Date of Survey: Commenced April, 1994 1" iron pipe North, 33'
 Completed April, 1994 (See OCS Map L-1347)

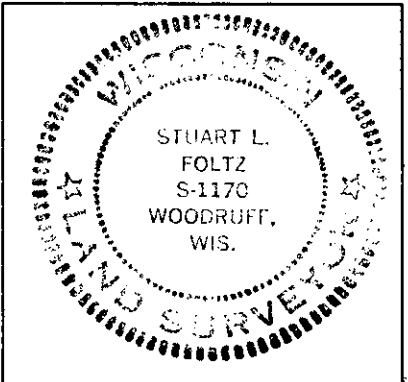
(b)(f)(g)(h) Description of monument found at this corner and if it was accepted, state all evidence (material, testimonial, occupational, plats, records, other monuments) used as a basis for accepting. If not accepted or if nothing was found, state evidence used as a basis for establishing location. If reestablished through lost corner proportionate methods, indicate all monuments, distances and directions used to establish. Indicate type of monument and sign post found or set.

January 23, 1995: I found no evidence of Fergot's 1" iron PIN. I set a survey marker nail at the midpoint of a line connecting the South 1/4 Corner and Southwest Section Corner. The 1/4 Corner bears N87°40'05"E, 1314.59'. The Section Corner bears S87°40'05"W, 1314.59'. I witnessed the Corner monument shown below. I was unable to set a capped monument or plastic sign post due to frost conditions.

(c)(d)(e) Plan view of corner with ties to at least 4 witness monuments. If in disagreement with previously established corner, show the distances between the two corners and also indicate the ties to the disputed.



Not to scale
 Bearings magnetic



(i) I, Stuart L. Foltz, Registered Land Surveyor hereby certify that the corner location on this record was determined by me or under my direction and control and that this U.S. Public Land Survey Monument Record is correct and complete to the best of my knowledge and belief.

Stuart L. Foltz
 Signature

2/15/95
 Date

INDEX NO. J-10

3704090030