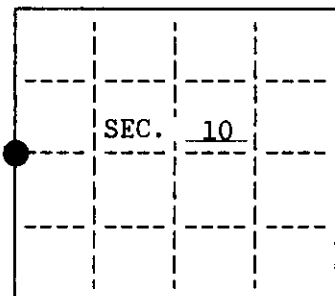


U.S. PUBLIC LAND SURVEY MONUMENT RECORD

Note: This form is intended and designed to fulfill all requirements of Wisconsin Administrative Code, Chapter A-E 7.08 U.S. Public Land Survey Monument Record (3)(a)(b)(c)(d)(e)(f)(g)(h)(i). An additional sheet may be added if necessary to conform with said requirements.

(a) CORNER LOCATION: State Plane Coordinates
 West 1/4 corner of Sec. 10 X _____
 Township 37 North Y _____
 Range 4 East Datum Base _____
 Town/City Lynne County of Oneida



(b) HISTORY OF ORIGINAL CORNER ESTABLISHMENT

Original Surveyor: Edward Palmer
 Date of Survey: Commenced October, 1864
 Completed October, 1864

Original B.T.'S

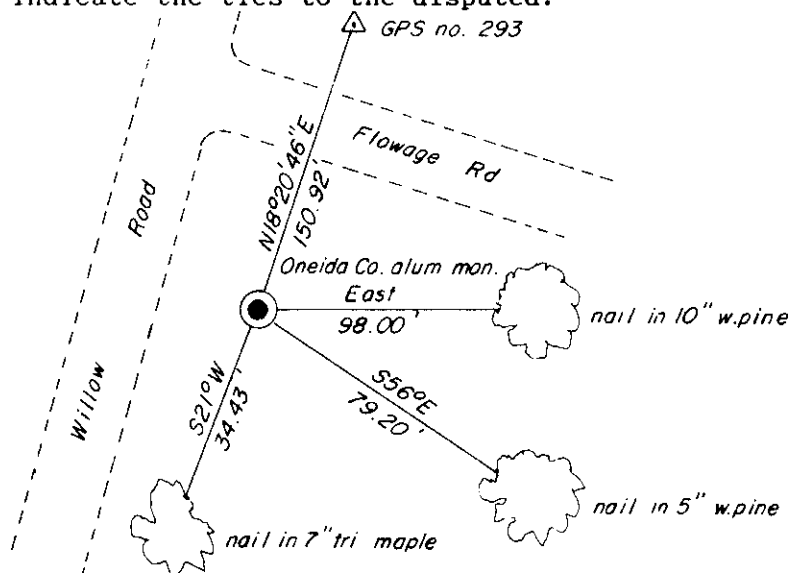
Hemlock 9 N30°W, 13 lks.
 Hemlock 7 N11°E, 11 lks.

(b)(f)(g)(h) Description of monument found at this corner and if it was accepted, state all evidence (material, testimonial, occupational, plats, records, other monuments) used as a basis for accepting. If not accepted or if nothing was found, state evidence used as basis for establishing location. If reestablished through lost corner proportionate methods, indicate all monuments, distances and directions used to establish. Indicate type of monument and sign post found or set.

April, 1964 - William Cameron set this corner by single proportion based on his retracement of the west line of Section 10.

August 29, 1994 - I found and accepted Cameron's 2" iron pipe which was found in agreement with his previous measurements. I replaced Cameron's pipe with a 2-1/2" x 30" Oneida County Aluminum Monument witnessed as shown below. I set a plastic signpost Southeast 1.5 feet.

(c)(d)(e) Plan view of corner with ties to at least 4 witness monuments. If in disagreement with previously established corner, show the distances between the two corners and also indicate the ties to the disputed.



Not to Scale



INDEX NO. 6-13

(i) I, Jeffrey W. Austin, Registered Land Surveyor hereby certify that the corner location on this record was determined by me or under my direction and control and that this U.S. Public Land Survey Monument Record is correct and complete to the best of my knowledge and belief.

Signature Iman-Foltz & Associates, Inc. Date 9-27-94