

At \_\_\_\_\_ O'Clock \_\_\_\_\_ M

U.S. PUBLIC LAND SURVEY MONUMENT RECORD

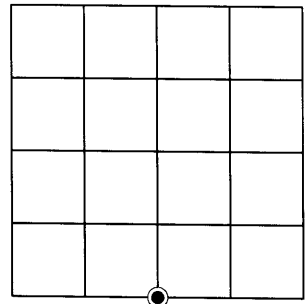
Note: This form is intended and designed to fulfill all requirements of the Wisconsin Administrative Code, Chapter A-E 7.08 U.S. Public Land Monument Record (3)(a)(b)(c)(d)(e)(f)(g)(h)(i). An additional sheet may be added if necessary to conform with said requirements.

(a) CORNER LOCATION:

South 1/4 corner of Section 15  
Township 37 North  
Range 4 East  
Town of Lynne  
County of Oneida

O. C. COORDINATES

North: 183496.86  
East: 120552.11  
Control Station: O.C. 203  
Latitude: 45°40'25.76036" N  
Longitude: 89°59'30.25436" W  
Datum: NAD - 83 (91)  
Method: Direct RTK - GPS



SECTION 15

(b) HISTORY OF ORIGINAL CORNER ESTABLISHMENT

Original Surveyor: Edward D. Palmer, Deputy Surveyor  
Date of Survey: Commenced October 4, 1864  
Completed October 13, 1864

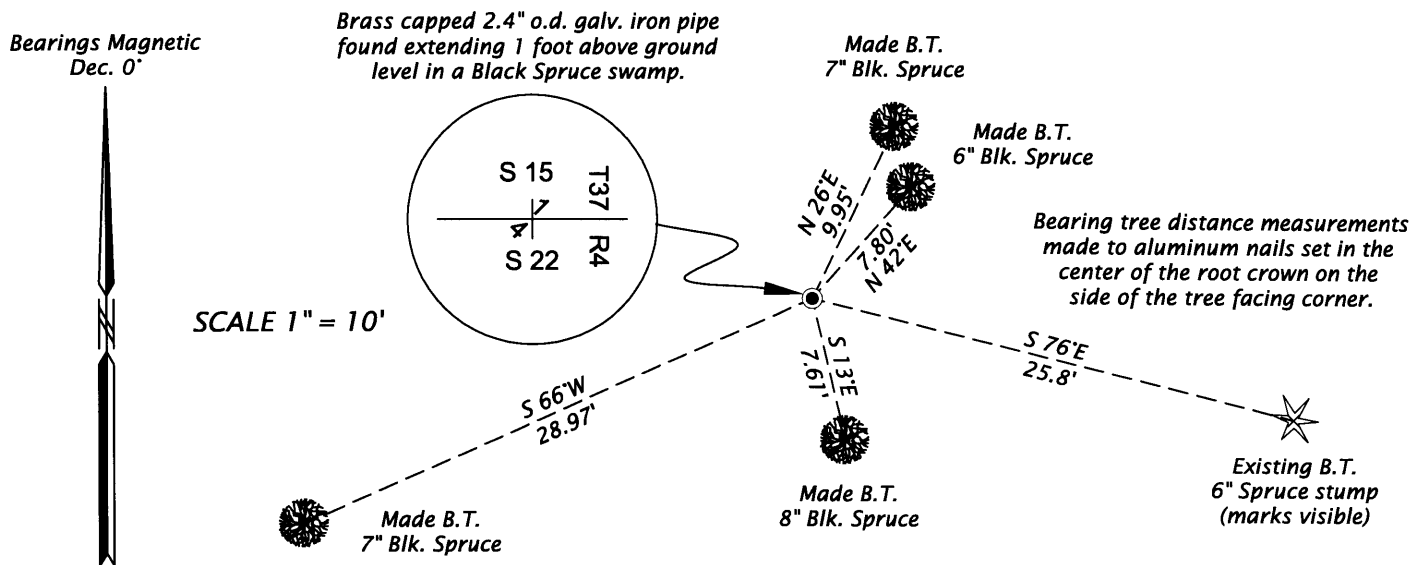
Original B.T.'s: Tamarac 7" N35°E, 12 links (7.92 feet)  
Tamarac 12" S61°W, 13 links (8.58 feet)

(f)(g)(h) DESCRIPTION OF MONUMENT FOUND AT THIS CORNER AND IF IT WAS ACCEPTED, STATE ALL EVIDENCE (MATERIAL, TESTIMONIAL, OCCUPATIONAL, PLATS, RECORDS, OTHER MONUMENTS) USED AS A BASIS FOR ESTABLISHING LOCATION. IF NOT ACCEPTED OF IF NOTHING WAS FOUND, STATE EVIDENCE USED AS BASIS FOR ESTABLISHING LOCATION. IF REESTABLISHED THROUGH LOST CORNER PROPORTIONATE METHODS, INDICATE ALL MONUMENTS, DISTANCES AND DIRECTIONS USED TO ESTABLISH. INDICATE TYPE OF MONUMENT AND SIGN POST FOUND OR SET.

December 14, 1936 - V. Maine, Surveyor - Maine Book 1936, page 352 - At 1/4 Stk. between 15 & 22. Found Orig. B.T. - It is down but marks are plain - In course in dist. found point of Orig. Gov't. stake. Gov't. B.T. viz. Tam 12 S 61°W, 13 lks. Put in official iron pipe, brass cap & stamped it. Marked new B.T.s viz. Spruce 7" S51°W, 26 3/4 (17.65 feet); Spruce 5", S85°E, 38 3/4 (25.57 feet).

March 25, 2003 - James D. Rein, RLS No. 1234 - Recover brass capped 2.4" dia. galvanized iron pipe, marked as shown, extending 1 foot above ground level in black spruce swamp. Plastic county marker post is 1.2 feet south of corner. Existing 6" dia. Black Spruce stump with scribe marks visible bears S76°E, 25.8 feet. Made bearing trees to reference the corner as shown below in plan view.

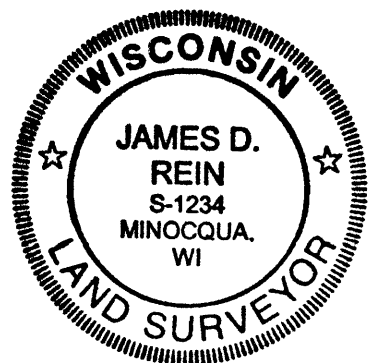
(c)(d)(e) PLAN VIEW OF CORNER WITH TIES TO AT LEAST 4 WITNESS MONUMENTS. IF IN DISAGREEMENT WITH PREVIOUSLY ESTABLISHED CORNER, SHOW THE DISTANCE BETWEEN THE TWO CORNERS AND ALSO INDICATE THE TIES TO THE DISPUTED CORNER.



(i) I, JAMES D. REIN, REGISTERED LAND SURVEYOR NO. S-1234 HEREBY CERTIFY THAT THE CORNER LOCATION ON THIS RECORD WAS DETERMINED BY ME OR UNDER MY DIRECTION AND CONTROL AND THAT THIS U.S. PUBLIC LAND SURVEY MONUMENT RECORD IS CORRECT AND COMPLETE TO THE BEST OF MY KNOWLEDGE AND BELIEF

SIGNATURE *[Handwritten Signature]*

DATE 12/08/03  
3704150020



INDEX NO. N-15