

At O'Clock M
U.S. PUBLIC LAND SURVEY MONUMENT RECORD

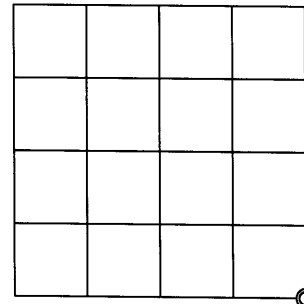
Note: This form is intended and designed to fulfill all requirements of the Wisconsin Administrative Code, Chapter A-E 7.08 U.S. Public Land Monument Record (3)(a)(b)(c)(d)(e)(f)(g)(h)(i). An additional sheet may be added if necessary to conform with said requirements.

(a) CORNER LOCATION:

Southeast corner of Section 16
Township 37 North
Range 4 East
Town of Lynne
County of Oneida

O.C. COORDINATES

North: 183547.11
East: 117918.75
Control Station: O. C. 203
Latitude: 45°40'25.76036" N
Longitude: 89°59'30.25436" W
Datum: NAD - 83 (91)
Method: Direct RTK - GPS



(b) HISTORY OF ORIGINAL CORNER ESTABLISHMENT

SECTION 16

Original Surveyor: Edward D. Palmer, Deputy Surveyor
Date of Survey: Commenced October 4, 1864
Completed October 13, 1864

Original B.T.'s: Fir 5" N32W, 7 links (4.62 feet)
Tamarac 6" N27°E, 9 links (5.94 feet)
Cedar 7" S47°E, 15 links (9.90 feet)
Cedar 14" S61°W, 6 links (3.96 feet)

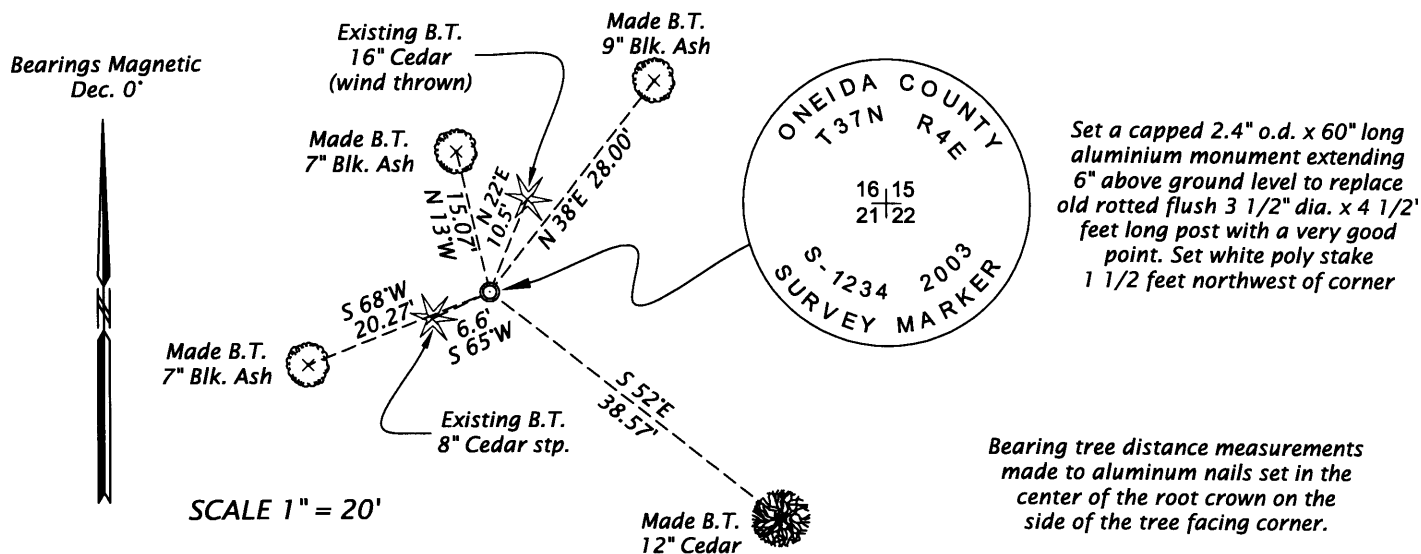
(f)(g)(h) DESCRIPTION OF MONUMENT FOUND AT THIS CORNER AND IF IT WAS ACCEPTED, STATE ALL EVIDENCE (MATERIAL, TESTIMONIAL, OCCUPATIONAL, PLATS, RECORDS, OTHER MONUMENTS) USED AS A BASIS FOR ESTABLISHING LOCATION. IF NOT ACCEPTED OF IF NOTHING WAS FOUND, STATE EVIDENCE USED AS BASIS FOR ESTABLISHING LOCATION. IF REESTABLISHED THROUGH LOST CORNER PROPORTIONATE METHODS, INDICATE ALL MONUMENTS, DISTANCES AND DIRECTIONS USED TO ESTABLISH. INDICATE TYPE OF MONUMENT AND SIGN POST FOUND OR SET.

1920's - Lynn Vaughn, Surveyor - C. D. Vaughn, Survey Book 38, page 86 filed in Oneida County Land Records Office - Survey in Section 21, T37N, R4E - N ¼ East Var. 4°E, 40.60 Hit NE Cor. {Cedar 13" N22°E 16 links (10.56 feet); Cedar 6" S65°W, 10 links (6.60 feet)}

October 26, 1924 - C. D. Vaughn, Surveyor, C. D. Vaughn, Survey Book 38, page 69 filed in Oneida County Land Records Office - Survey in Section 15, T37N, R4E - SW Cor. 15 N. Var 3° E Orig. CK - New by Lynn Vaughn

June 26, 2003 - James D. Rein, RLS No. 1234 - Recovered 3½" dia. x 4½ feet long post, rotted flush, with a very good point, verified by the stumps of Lynn Vaughn's bearing trees. I replace the post with a capped 2.4" dia. x 60" long aluminum monument extending 6" above ground level. The monument turned 90° counter clockwise when it was driven in the ground. We set a white poly stake 1 ½ feet northwest of the corner and made new bearing tree reference ties as shown below in the plan view. The corner is located in a black ash and cedar swamp.

(c)(d)(e) PLAN VIEW OF CORNER WITH TIES TO AT LEAST 4 WITNESS MONUMENTS. IF IN DISAGREEMENT WITH PREVIOUSLY ESTABLISHED CORNER, SHOW THE DISTANCE BETWEEN THE TWO CORNERS AND ALSO INDICATE THE TIES TO THE DISPUTED CORNER.

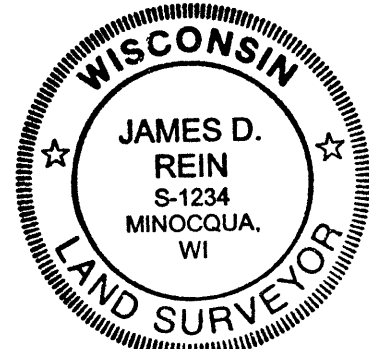


(i) I, JAMES D. REIN, REGISTERED LAND SURVEYOR NO. S-1234 HEREBY CERTIFY THAT THE CORNER LOCATION ON THIS RECORD WAS DETERMINED BY ME OR UNDER MY DIRECTION AND CONTROL AND THAT THIS U.S. PUBLIC LAND SURVEY MONUMENT RECORD IS CORRECT AND COMPLETE TO THE BEST OF MY KNOWLEDGE AND BELIEF.

[Signature]
SIGNATURE

12/08/03
DATE

3704160000



INDEX NO. N-13