

At _____ O'Clock _____ M

THOMAS H. LEIGHTON

U.S. PUBLIC LAND SURVEY MONUMENT RECORD

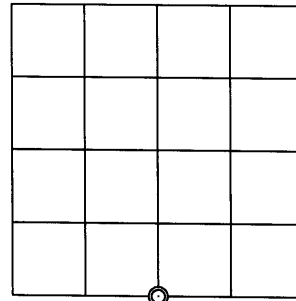
Note: This form is intended and designed to fulfill all requirements of the Wisconsin Administrative Code, Chapter A-E 7.08 U.S. Public Land Monument Record (3)(a)(b)(c)(d)(e)(f)(g)(h)(i). An additional sheet may be added if necessary to conform with said requirements.

(a) CORNER LOCATION:

South 1/4 corner of Section 16
Township 37 North
Range 4 East
Town of Lynne
County of Oneida

O. C. COORDINATES

North: 183435.93
East: 115240.13
Control Station: O. C. 203
Latitude: 45°40'25.76036" N
Longitude: 89°59'30.25436" W
Datum: NAD - 83 (91)
Method: Direct RTK - GPS



SECTION 16

(b) HISTORY OF ORIGINAL CORNER ESTABLISHMENT

Original Surveyor: Edward D. Palmer, Deputy Surveyor
Date of Survey: Commenced October, 4, 1864
Completed October 13, 1864

Original B.T.'s: Tamarac 7" N44°W, 28 links (18.48 feet)
W. Pine 9" S26°E, 32 links (21.12 feet)

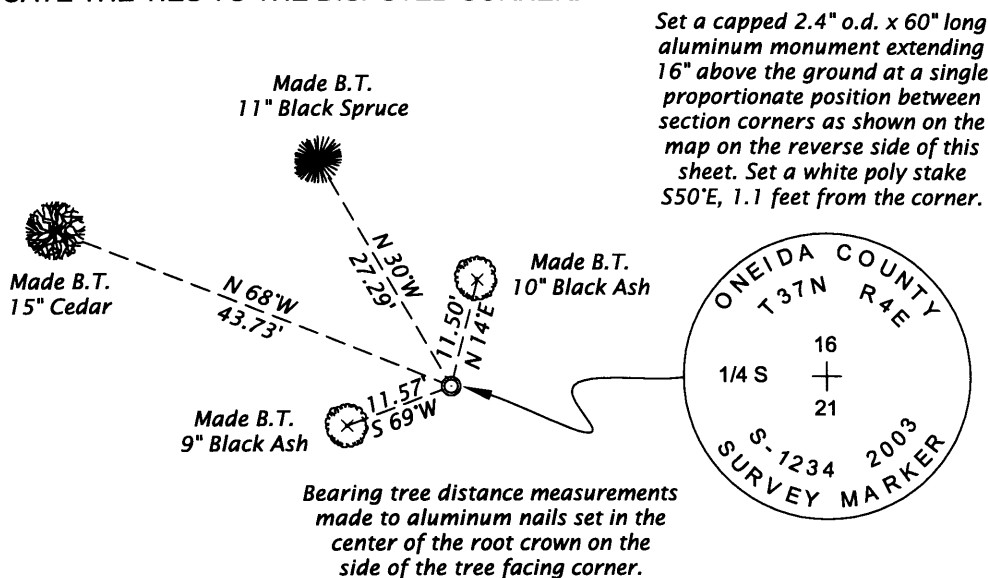
(f)(g)(h) DESCRIPTION OF MONUMENT FOUND AT THIS CORNER AND IF IT WAS ACCEPTED, STATE ALL EVIDENCE (MATERIAL, TESTIMONIAL, OCCUPATIONAL, PLATS, RECORDS, OTHER MONUMENTS) USED AS A BASIS FOR ESTABLISHING LOCATION. IF NOT ACCEPTED OF IF NOTHING WAS FOUND, STATE EVIDENCE USED AS BASIS FOR ESTABLISHING LOCATION. IF REESTABLISHED THROUGH LOST CORNER PROPORTIONATE METHODS, INDICATE ALL MONUMENTS, DISTANCES AND DIRECTIONS USED TO ESTABLISH. INDICATE TYPE OF MONUMENT AND SIGN POST FOUND OR SET.

1920's - Lynn Vaughn, Surveyor - C. D. Vaughn, Survey Book 38, pages 86 and 87 filed in the Oneida County Land Records Office - Survey in Section 21, T37N, R4E - S 1/4, N. Var. 4° E, 82.47 chains fell 52 links east of N 1/4 Corner; Fir 8" N30°W, 18 links (11.88 feet), Spr. 12" S22°W, 37 links (24.42 feet)

October 9, 2003 - James D. Rein, RLS No. 1234 - After performing searches for evidence of this corner, I conclude that it is lost and reestablish it by single proportionate measurement between the section corners as shown on the reverse side of this monument record. We set a capped 2.4" o.d. x 60" long aluminum monument extending 16" above ground level at the computed position. We also set a white poly stake S50°E, 1.1 feet from the corner monument and made reference ties to bearing trees as shown below in the plan view.

SEE REVERSE SIDE OF THIS SHEET

(c)(d)(e) PLAN VIEW OF CORNER WITH TIES TO AT LEAST 4 WITNESS MONUMENTS. IF IN DISAGREEMENT WITH PREVIOUSLY ESTABLISHED CORNER, SHOW THE DISTANCE BETWEEN THE TWO CORNERS AND ALSO INDICATE THE TIES TO THE DISPUTED CORNER.



Bearings Magnetic
Dec. 0°

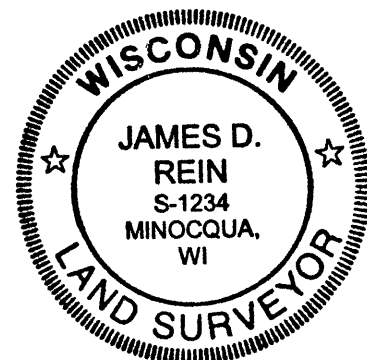


SCALE 1" = 20'

(i) I, JAMES D. REIN, REGISTERED LAND SURVEYOR NO. S-1234 HEREBY CERTIFY THAT THE CORNER LOCATION ON THIS RECORD WAS DETERMINED BY ME OR UNDER MY DIRECTION AND CONTROL AND THAT THIS U.S. PUBLIC LAND SURVEY MONUMENT RECORD IS CORRECT AND COMPLETE TO THE BEST OF MY KNOWLEDGE AND BELIEF.

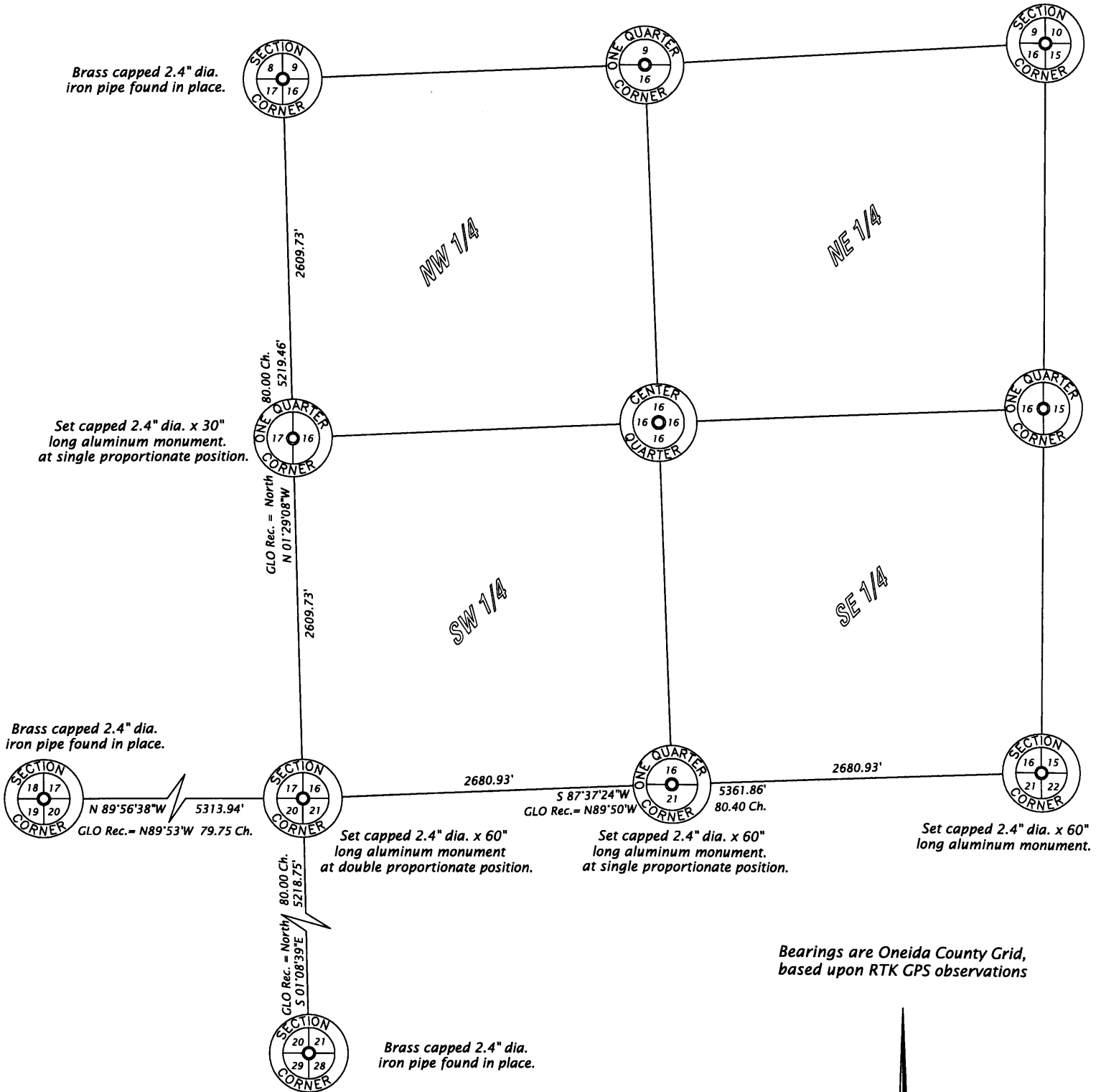
[Handwritten Signature]
SIGNATURE

12/08/03
DATE
3704160020



SECTION 16, T37N, R4E

Scale 1" = 1000'



Bearings are Oneida County Grid, based upon RTK GPS observations

[Handwritten Signature]
 SIGNATURE 12/08/03
 DATE

