

At _____ O'Clock _____ M

THOMAS H. LEIGHTON
REGISTERED LAND SURVEYOR
U.S. PUBLIC LAND SURVEY MONUMENT RECORD

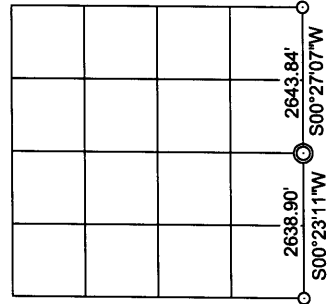
Note: This form is intended and designed to fulfill all requirements of the Wisconsin Administrative Code, Chapter A-E 7.08 U.S. Public Land Monument Record (3)(a)(b)(c)(d)(e)(f)(g)(h)(i). An additional sheet may be added if necessary to conform with said requirements.

(a) CORNER LOCATION:

East 1/4 corner of Section 16
Township 37 North
Range 4 East
Town of Lynne
County of Oneida

O. C. COORDINATES

North: 186185.95
East: 117936.54
Control Station: O. C. 203
Latitude: 45°40'25.76036" N
Longitude: 89°59'30.25436" W
Datum: NAD - 83 (91)
Method: Direct RTK - GPS



(b) HISTORY OF ORIGINAL CORNER ESTABLISHMENT

SECTION 16

Original Surveyor: Edward D. Palmer, Deputy Surveyor
Date of Survey: Commenced October 4, 1864
Completed October 13, 1864

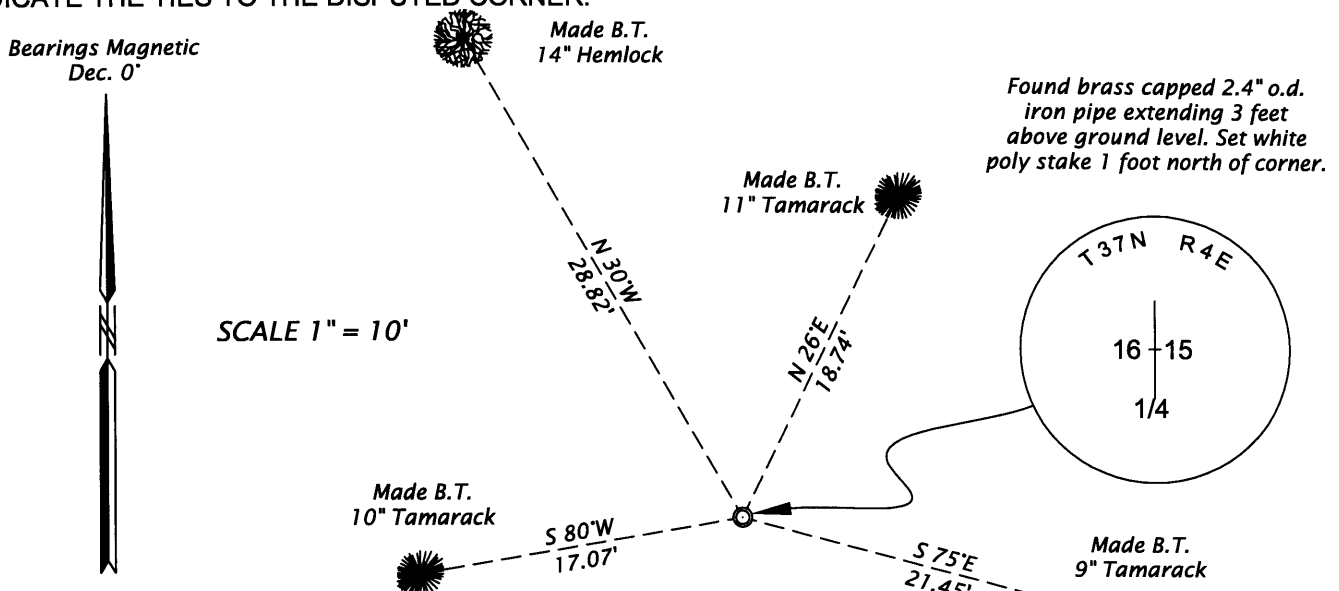
Original B.T.'s: Cedar 9" N67°W, 16 links (10.56 feet)
W. Pine 26" S30°E, 11 links (7.26 feet)

(f)(g)(h) DESCRIPTION OF MONUMENT FOUND AT THIS CORNER AND IF IT WAS ACCEPTED, STATE ALL EVIDENCE (MATERIAL, TESTIMONIAL, OCCUPATIONAL, PLATS, RECORDS, OTHER MONUMENTS) USED AS A BASIS FOR ESTABLISHING LOCATION. IF NOT ACCEPTED OF IF NOTHING WAS FOUND, STATE EVIDENCE USED AS BASIS FOR ESTABLISHING LOCATION. IF REESTABLISHED THROUGH LOST CORNER PROPORTIONATE METHODS, INDICATE ALL MONUMENTS, DISTANCES AND DIRECTIONS USED TO ESTABLISH. INDICATE TYPE OF MONUMENT AND SIGN POST FOUND OR SET.

October 26, 1924 - C. D. Vaughn, Surveyor - C. D. Vaughn Survey Book 38, page 69 filed in the Oneida County Land Records Office - Survey in Section 15, T37N, R4E, SW Cor. 15 N. Var. 3°E, Orig. ck, new by Lynn Vaughn, 80.00 Sec. Cor. - W 1/4 in beaver flowage.

February 17, 2003 - James D. Rein, RLS No. 1234 - Recovered a brass capped 2.4" o.d. iron pipe extending 3 feet above ground level. This corner monument possibly set by the county by single proportionate measurement. I accept it as the best evidence for the original corner position and on December 22, 2003, we make new bearing tree ties as shown below in the plan view. Bearing tree distance measurements made to aluminum nails set in the center of the root crown on the side of the tree facing the corner. Also set a white poly stake 1 foot north of the corner monument.
Note: Distance measurements made to top of brass cap, leaning North, 0.3 feet.

(c)(d)(e) PLAN VIEW OF CORNER WITH TIES TO AT LEAST 4 WITNESS MONUMENTS. IF IN DISAGREEMENT WITH PREVIOUSLY ESTABLISHED CORNER, SHOW THE DISTANCE BETWEEN THE TWO CORNERS AND ALSO INDICATE THE TIES TO THE DISPUTED CORNER.



Found brass capped 2.4" o.d. iron pipe extending 3 feet above ground level. Set white poly stake 1 foot north of corner.

(i) I, JAMES D. REIN, REGISTERED LAND SURVEYOR NO. S-1234 HEREBY CERTIFY THAT THE CORNER LOCATION ON THIS RECORD WAS DETERMINED BY ME OR UNDER MY DIRECTION AND CONTROL AND THAT THIS U.S. PUBLIC LAND SURVEY MONUMENT RECORD IS CORRECT AND COMPLETE TO THE BEST OF MY KNOWLEDGE AND BELIEF.

[Handwritten Signature]
SIGNATURE

12/08/03
DATE
2000
370416



INDEX NO. L-13