

At _____ O'Clock _____ M
THOMAS H. LEIGHTON

U.S. PUBLIC LAND SURVEY MONUMENT RECORD

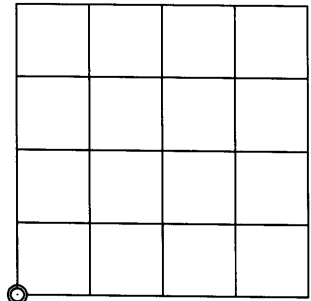
Note: This form is intended and designed to fulfill all requirements of the Wisconsin Administrative Code, Chapter A-E 7.08 U.S. Public Land Monument Record (3)(a)(b)(c)(d)(e)(f)(g)(h)(i). An additional sheet may be added if necessary to conform with said requirements.

(a) CORNER LOCATION:

Southwest corner of Section 16
Township 37 North
Range 4 East
Town of Lynne
County of Oneida

O. C. COORDINATES

North: 183324.75
East: 112561.51
Control Station: O. C. 203
Latitude: 45°40'25.76036" N
Longitude: 89°59'30.25436" W
Datum: NAD - 83 (91)
Method: Direct RTK - GPS



SECTION 16

(b) HISTORY OF ORIGINAL CORNER ESTABLISHMENT

Original Surveyor: Edward D. Palmer, Deputy Surveyor
Date of Survey: Commenced October 4, 1864
Completed October 13, 1864

Original B.T.'s: Tamarac 9" N74W, 12 links (7.92 feet)
Birch 7" N10E, 34 links (22.44 feet)
Birch 6" S49°E, 33 links (21.78 feet)
Cedar 7" S38°W, 70 links (46.20 feet)

(f)(g)(h) DESCRIPTION OF MONUMENT FOUND AT THIS CORNER AND IF IT WAS ACCEPTED, STATE ALL EVIDENCE (MATERIAL, TESTIMONIAL, OCCUPATIONAL, PLATS, RECORDS, OTHER MONUMENTS) USED AS A BASIS FOR ESTABLISHING LOCATION. IF NOT ACCEPTED OF IF NOTHING WAS FOUND, STATE EVIDENCE USED AS BASIS FOR ESTABLISHING LOCATION. IF REESTABLISHED THROUGH LOST CORNER PROPORTIONATE METHODS, INDICATE ALL MONUMENTS, DISTANCES AND DIRECTIONS USED TO ESTABLISH. INDICATE TYPE OF MONUMENT AND SIGN POST FOUND OR SET.

October 9, 2003 - James D. Rein, RLS No. 1234 - After performing searches for evidence of this corner, I conclude that it is lost and reestablish it by double proportionate measurements between the nearest recovered corners as shown on the reverse side of this monument record. We set a capped 2.4" o.d. x 60" long aluminum monument extending 6" above ground level at the computed position. We set a white poly stake 1.5 feet west of the corner monument and made reference ties to bearings trees as shown below in the plan view.

SEE REVERSE SIDE OF THIS SHEET

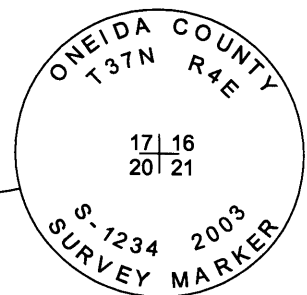
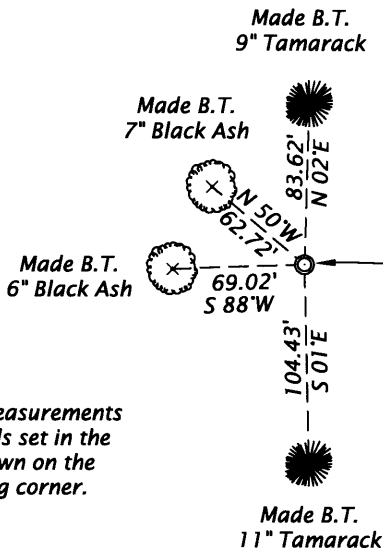
(c)(d)(e) PLAN VIEW OF CORNER WITH TIES TO AT LEAST 4 WITNESS MONUMENTS. IF IN DISAGREEMENT WITH PREVIOUSLY ESTABLISHED CORNER, SHOW THE DISTANCE BETWEEN THE TWO CORNERS AND ALSO INDICATE THE TIES TO THE DISPUTED CORNER.

Bearings Magnetic
Dec. 0°



SCALE 1" = 100'

Bearing tree distance measurements made to aluminum nails set in the center of the root crown on the side of the tree facing corner.



Set a capped 2.4" o.d. x 60" long aluminum monument extending 6" above ground at the double proportionate position between section corners as shown on the map on the reverse side of this sheet. Set a white poly stake 1.5 feet west of the corner.

(i) I, JAMES D. REIN, REGISTERED LAND SURVEYOR NO. S-1234 HEREBY CERTIFY THAT THE CORNER LOCATION ON THIS RECORD WAS DETERMINED BY ME OR UNDER MY DIRECTION AND CONTROL AND THAT THIS U.S. PUBLIC LAND SURVEY MONUMENT RECORD IS CORRECT AND COMPLETE TO THE BEST OF MY KNOWLEDGE AND BELIEF.

[Handwritten Signature]
SIGNATURE

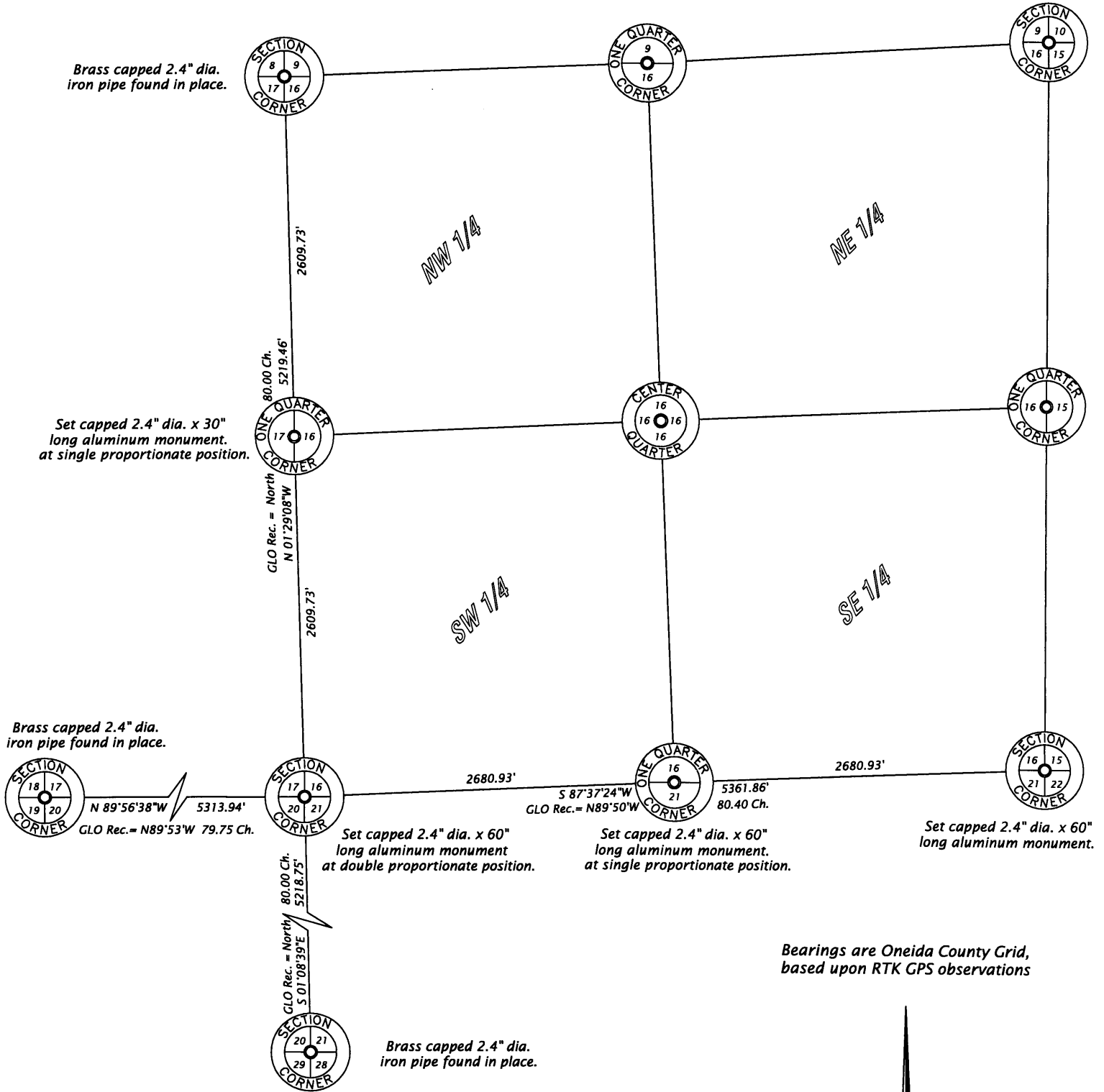
12/08/03
DATE

3704170000



SECTION 16, T37N, R4E

Scale 1"= 1000'



Bearings are Oneida County Grid, based upon RTK GPS observations

[Handwritten Signature]
 SIGNATURE
 12/03/23
 DATE

