

U.S. PUBLIC LAND SURVEY MONUMENT RECORD

Note: This form is intended and designed to fulfill all requirements of the Wisconsin Administrative Code, Chapter A-E 7.08 U.S. Public Land Monument Record (3)(a)(b)(c)(d)(e)(f)(g)(h)(i). An additional sheet may be added if necessary to conform with said requirements.

REGISTER OF DEEDS OFFICE
ONEIDA COUNTY
FILED

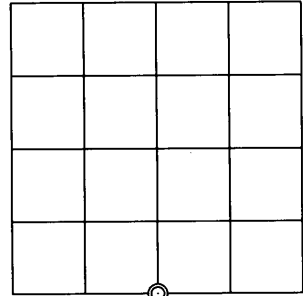
JUN 4 2012

AT O'CLOCK M
THOMAS H. LEIGHTON
REGISTER OF DEEDS

(a) CORNER LOCATION:
South Quarter Corner of Section 17
Township 37 North
Range 4 East
Town of Lynne
County Oneida
Wisconsin

COORDINATES
North: 183327.341
East: 109904.538
Control Station: Oneida Cty. 203-S
Latitude: N 45° 40' 25.76036"
Longitude: W 89° 59' 30.25436"
Datum: NAD 83 (91)
Method: RTK GPS, Direct

(RECORDING AREA)
SECTION 17

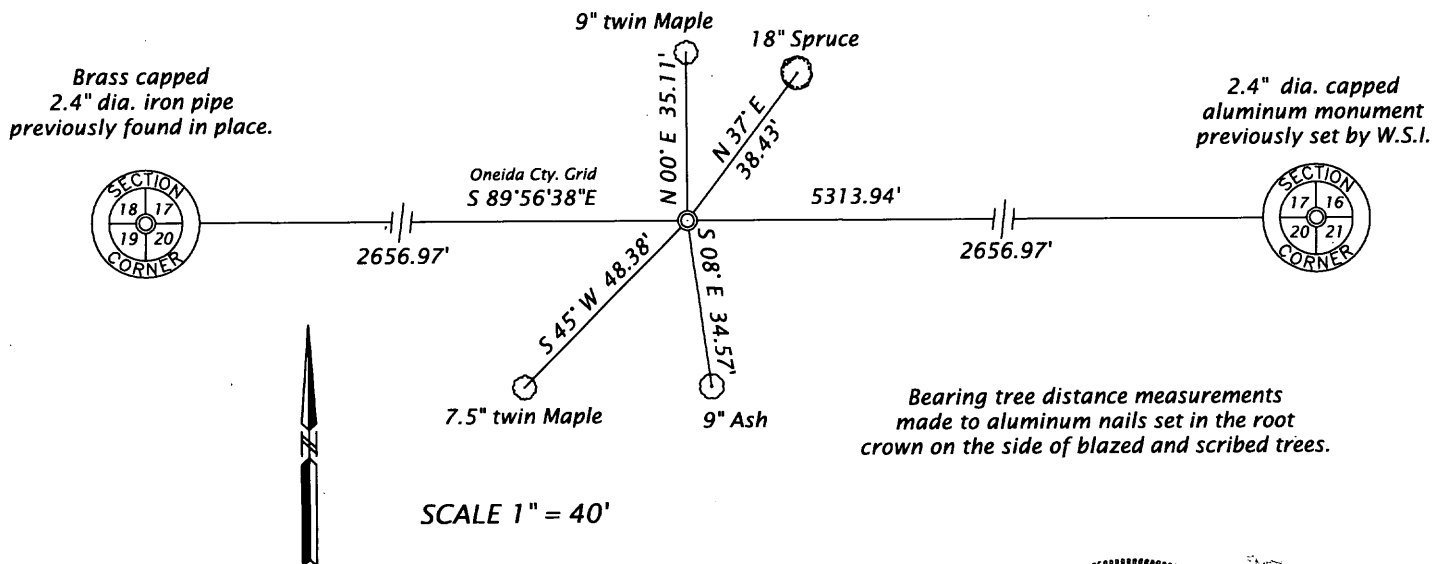


(b) HISTORY OF ORIGINAL CORNER ESTABLISHMENT
Original Surveyor: Edward D. Palmer, Deputy Surveyor
Date of Survey: Commenced October 4, 1864
Completed October 13, 1864
Original B.T.'s: 18" Lind, N 60° E, 14 links
7" Hemlock, S 20° E, 5 links

(f)(g)(h) DESCRIPTION OF MONUMENT FOUND AT THIS CORNER AND IF IT WAS ACCEPTED, STATE ALL EVIDENCE (MATERIAL, TESTIMONIAL, OCCUPATIONAL, PLATS, RECORDS, OTHER MONUMENTS) USED AS A BASIS FOR ESTABLISHING LOCATION. IF NOT ACCEPTED OF IF NOTHING WAS FOUND, STATE EVIDENCE USED AS BASIS FOR ESTABLISHING LOCATION. IF REESTABLISHED THROUGH LOST CORNER PROPORTIONATE METHODS, INDICATE ALL MONUMENTS, DISTANCES AND DIRECTIONS USED TO ESTABLISH. INDICATE TYPE OF MONUMENT AND SIGN POST FOUND OR SET.

April 12, 2012 - James D. Rein, RLS No. 1234 - After an extensive search, I previously searched for this corner in late April, 2003, and determined this corner is lost. We thus re-establish its position by single proportionate measurement between the section corners as shown in plan. We set an Oneida County capped 2.4" outside diameter x 30" long flange bottom aluminum monument for corner. We also set a white poly stake 1.2 feet West and made new blazed and scribed bearing trees as shown in plan.

(c)(d)(e) PLAN VIEW OF CORNER WITH TIES TO AT LEAST 4 WITNESS MONUMENTS. IF IN DISAGREEMENT WITH PREVIOUSLY ESTABLISHED CORNER, SHOW THE DISTANCE BETWEEN THE TWO CORNERS AND ALSO INDICATE THE TIES TO THE DISPUTED CORNER.



(i) I, JAMES D. REIN, PROFESSIONAL LAND SURVEYOR NO. S-1234 HEREBY CERTIFY THAT THE CORNER LOCATION ON THIS RECORD WAS DETERMINED BY ME OR UNDER MY DIRECTION AND CONTROL AND THAT THIS U.S. PUBLIC LAND SURVEY MONUMENT RECORD IS CORRECT AND COMPLETE TO THE BEST OF MY KNOWLEDGE AND BELIEF.

[Handwritten Signature]
SIGNATURE

S-23-12
DATE



3704170020

INDEX NO. 27