

# U.S. PUBLIC LAND SURVEY MONUMENT RECORD

Note: This form is intended and designed to fulfill all requirements of the Wisconsin Administrative Code, Chapter A-E 7.08 U.S. Public Land Monument Record (3)(a)(b)(c)(d)(e)(f)(g)(h)(i). An additional sheet may be added if necessary to conform with said requirements.

REGISTER OF DEEDS OFFICE  
ONEIDA COUNTY

**FILED**

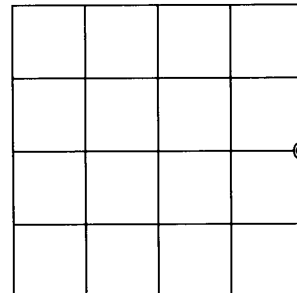
**JUN 4 2012**

(a) CORNER LOCATION: East Quarter Corner of Section 19  
Township 37 North  
Range 4 East  
Town of Lynne  
County Oneida  
Wisconsin

COORDINATES  
North: 180756.020  
East: 107163.493  
Control Station: Oneida Cty. 203-S  
Latitude: N 45° 40' 25.76036"  
Longitude: W 89° 59' 30.25436"  
Datum: NAD 83 (91)  
Method: RTK GPS, Direct

AT \_\_\_\_\_ O'CLOCK \_\_\_\_\_ M  
**THOMAS H. LEIGHTON**  
REGISTER OF DEEDS

(RECORDING AREA)  
**SECTION 19**



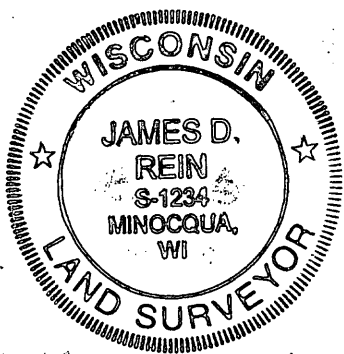
(b) HISTORY OF ORIGINAL CORNER ESTABLISHMENT

Original Surveyor: Edward D. Palmer, Deputy Surveyor  
Date of Survey: Commenced October 4, 1864  
Completed October 13, 1864  
Original B.T.'s: 6" Cedar, N 27° W, 17 links  
8" Cedar, S 32° E, 18 links

(f)(g)(h) DESCRIPTION OF MONUMENT FOUND AT THIS CORNER AND IF IT WAS ACCEPTED, STATE ALL EVIDENCE (MATERIAL, TESTIMONIAL, OCCUPATIONAL, PLATS, RECORDS, OTHER MONUMENTS) USED AS A BASIS FOR ESTABLISHING LOCATION. IF NOT ACCEPTED OF IF NOTHING WAS FOUND, STATE EVIDENCE USED AS BASIS FOR ESTABLISHING LOCATION. IF REESTABLISHED THROUGH LOST CORNER PROPORTIONATE METHODS, INDICATE ALL MONUMENTS, DISTANCES AND DIRECTIONS USED TO ESTABLISH. INDICATE TYPE OF MONUMENT AND SIGN POST FOUND OR SET.

*April 12, 2012 - James D. Rein, RLS No. 1234 - After an extensive search, I determined this corner is lost. We thus re-establish its position by single proportionate measurement between the section corners as shown in plan. We set an Oneida County capped 2.4" outside diameter x 60" long aluminum monument for corner. We also set a white poly stake 1 foot North and made new blazed and scribed bearing trees as shown in plan.*

(c)(d)(e) PLAN VIEW OF CORNER WITH TIES TO AT LEAST 4 WITNESS MONUMENTS. IF IN DISAGREEMENT WITH PREVIOUSLY ESTABLISHED CORNER, SHOW THE DISTANCE BETWEEN THE TWO CORNERS AND ALSO INDICATE THE TIES TO THE DISPUTED CORNER.

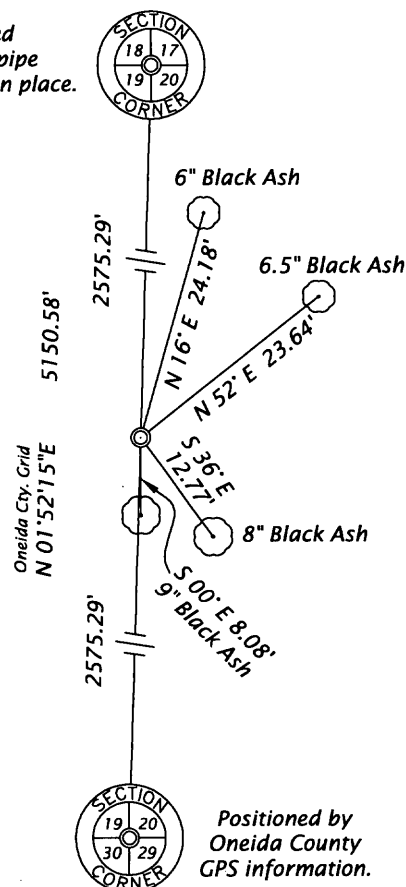


Brass capped  
2.4" dia. iron pipe  
previously found in place.



SCALE 1" = 20'

Bearing tree distance measurements  
made to aluminum nails set in the root  
crown on the side of blazed and scribed trees.



(i) I, JAMES D. REIN, PROFESSIONAL LAND SURVEYOR NO. S-1234 HEREBY CERTIFY THAT THE CORNER LOCATION ON THIS RECORD WAS DETERMINED BY ME OR UNDER MY DIRECTION AND CONTROL AND THAT THIS U.S. PUBLIC LAND SURVEY MONUMENT RECORD IS CORRECT AND COMPLETE TO THE BEST OF MY KNOWLEDGE AND BELIEF

SIGNATURE

DATE

*S-23-12*

370419 2000

INDEX NO. **P 5**