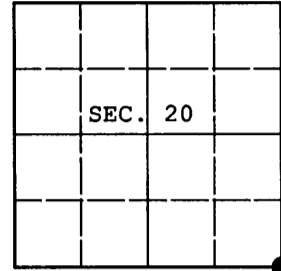


U.S. PUBLIC LAND SURVEY MONUMENT RECORD

Note: This form is intended and designed to fulfill all requirements of Wisconsin Administrative Code, Chapter A-E 7.08 U.S. Public Land Survey Monument Record (3) (a) (b) (c) (d) (e) (f) (g) (h) (i). An additional sheet may be added if necessary to conform with said requirements.

(a) CORNER LOCATION: Oneida County Coordinates
 Cor. of Secs. 20, 21, 28 & 29 N:
 Township 37 North E:
 Range 4 East of the 4th P.M. Datum:
 Town of Lynne County of Oneida



(b) HISTORY OF ORIGINAL CORNER ESTABLISHMENT

Original Surveyor: Edward D. Palmer Original Accessories:
 Date of Survey: Commenced: Oct. 4, 1864 hemlock 9" N37°W, 12 lks.
 Completed: Oct. 13, 1864 birch 12" N28°E, 40 lks.
 birch 7" S30°E, 13 lks.
 hemlock 8" S21°W, 19 lks.

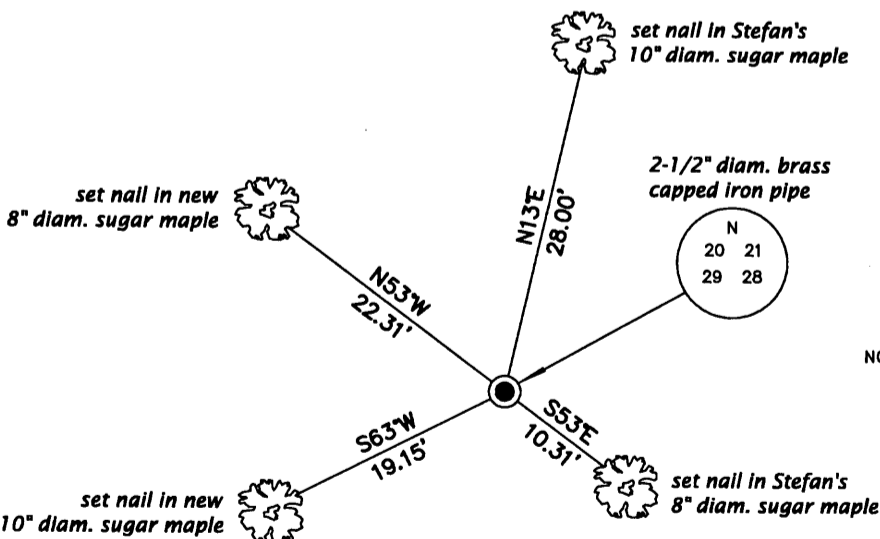
(b) (f) (g) (h) Description of monument found at this corner and if it was accepted, state all evidence (material, testimonial, occupational, plats, records, other monuments) used as a basis for accepting. If not accepted or if nothing was found, state evidence used as basis for establishing location. If re-established through lost corner proportionate methods, indicate all monuments, distances and directions used to establish. Indicate type of monument and sign post found or set.

NOTE: This is a perpetuation of a previous USPLS Monument Record by Milo E. Stefan, RLS dated March 22, 1991 and filed in the office of the Oneida County Register of Deeds. A complete history of the corner can be found on the previous monument record. I accept the previous location as a true and faithful perpetuation or reestablishment of the original corner location and further perpetuate it as follows.

February, 1939: Since Stefan's work, notes by Gobler in book 97 on page 16 have come to light identifying the corner as "ORIG. COR. I.P."

October 10, 2012: A 2-1/2" diam. iron pipe with 2-1/2" diam. brass cap projecting 26" above the ground surface was found. Stefan's westerly bearing trees have recently been cut. Accessories were found or established as shown below and a white plastic sign post bears Southeast, 1/2 ft. dist.

(c) (d) (e) Plan view of corner with ties to at least 4 witness monuments. If in disagreement with previously established corner, show the distances between the two corners and also indicate the ties to the disputed.

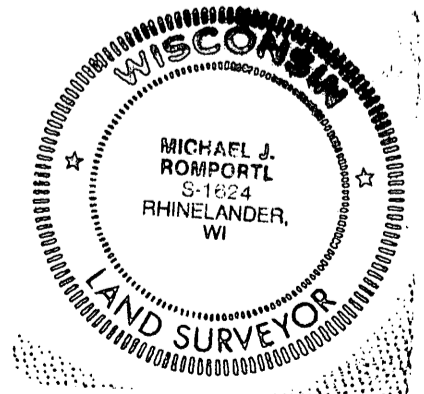


REGISTER OF DEEDS OFFICE
 ONEIDA COUNTY
 FILED

APR 15 2013

AT _____ O'CLOCK _____ M
 KYLE J. FRANSON
 REGISTER OF DEEDS

(i) I, Michael J. Romportl, Registered Land Surveyor No. S-1624, hereby certify that the corner location on this record was determined by me or under my direction and control and that this U.S. Public Land Survey Monument Record is correct and complete to the best of my knowledge and belief.



Michael J. Romportl 2/12/2013
 Signature Date