

# U.S. PUBLIC LAND SURVEY MONUMENT RECORD

Note: This form is intended and designed to fulfill all requirements of the Wisconsin Administrative Code, Chapter A-E 7.08 U.S. Public Land Monument Record (3)(a)(b)(c)(d)(e)(f)(g)(h)(i). An additional sheet may be added if necessary to conform with said requirements.

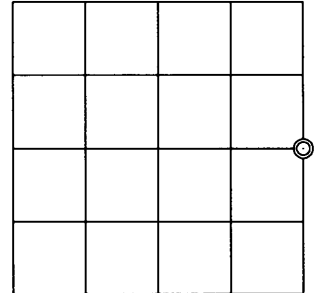
REGISTER OF DEEDS OFFICE  
ONEIDA COUNTY  
**FILED**

JUN 4 2012

AT \_\_\_\_\_ O'CLOCK \_\_\_\_\_ M  
**THOMAS H. LEIGHTON**  
REGISTER OF DEEDS

(a) CORNER LOCATION: **COORDINATES**  
East Quarter Corner of Section 20 North: 180715.890  
Township 37 North East: 112613.608  
Range 4 East Control Station: Oneida Cty. 203-S  
Town of Lynne Latitude: N 45° 40' 25.76036"  
County Oneida Longitude: W 89° 59' 30.25436"  
Wisconsin Datum: NAD 83 (91)  
Method: RTK GPS, Offset

(RECORDING AREA)  
**SECTION 20**



(b) HISTORY OF ORIGINAL CORNER ESTABLISHMENT

Original Surveyor: Edward D. Palmer, Deputy Surveyor  
Date of Survey: Commenced October 4, 1864  
Completed October 13, 1864  
Original B.T.'s: 12" Sugar Maple, S 40° W, 18 links  
9" Birch, N 60° E, 14 links

(f)(g)(h) DESCRIPTION OF MONUMENT FOUND AT THIS CORNER AND IF IT WAS ACCEPTED, STATE ALL EVIDENCE (MATERIAL, TESTIMONIAL, OCCUPATIONAL, PLATS, RECORDS, OTHER MONUMENTS) USED AS A BASIS FOR ESTABLISHING LOCATION. IF NOT ACCEPTED OF IF NOTHING WAS FOUND, STATE EVIDENCE USED AS BASIS FOR ESTABLISHING LOCATION. IF REESTABLISHED THROUGH LOST CORNER PROPORTIONATE METHODS, INDICATE ALL MONUMENTS, DISTANCES AND DIRECTIONS USED TO ESTABLISH. INDICATE TYPE OF MONUMENT AND SIGN POST FOUND OR SET.

1924 ? CD Vaugh, Surveyor - C.D. Vaughn Book 38, pages 86 and 87 filed in the Oneida County Land Information Office - Shows distance measurement of 80.09 chains from the quarter corner common to Sections 21 and 22.

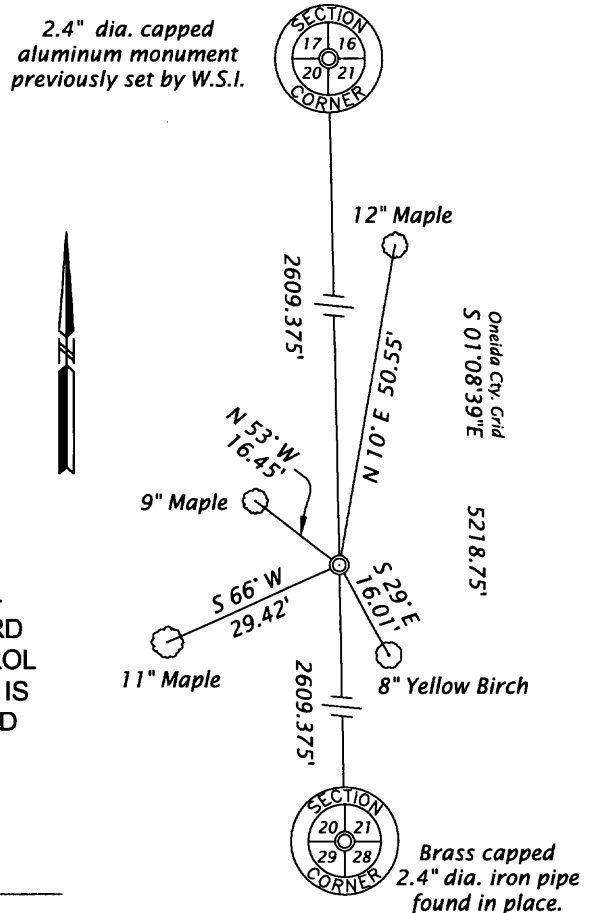
April 12, 2012 - James D. Rein, RLS No. 1234 - After an extensive search, I previously searched for this corner in February and late March in 2003, and determined this corner is lost. We thus re-establish its position by single proportionate measurement between the section corners as shown in plan. We set an Oneida County capped 2.4" o.d. x 30" long flange bottom aluminum monument for corner. We also set a white poly stake 1 foot North and made new blazed and scribed bearing trees as shown in plan.

(c)(d)(e) PLAN VIEW OF CORNER WITH TIES TO AT LEAST 4 WITNESS MONUMENTS. IF IN DISAGREEMENT WITH PREVIOUSLY ESTABLISHED CORNER, SHOW THE DISTANCE BETWEEN THE TWO CORNERS AND ALSO INDICATE THE TIES TO THE DISPUTED CORNER.



SCALE 1" = 30'

Bearing tree distance measurements made to aluminum nails set in the root crown on the side of blazed and scribed trees.



(i) I, JAMES D. REIN, PROFESSIONAL LAND SURVEYOR NO. S-1234 HEREBY CERTIFY THAT THE CORNER LOCATION ON THIS RECORD WAS DETERMINED BY ME OR UNDER MY DIRECTION AND CONTROL AND THAT THIS U.S. PUBLIC LAND SURVEY MONUMENT RECORD IS CORRECT AND COMPLETE TO THE BEST OF MY KNOWLEDGE AND BELIEF.

SIGNATURE \_\_\_\_\_ DATE S-23-12

3704 20 2000

INDEX NO. 29