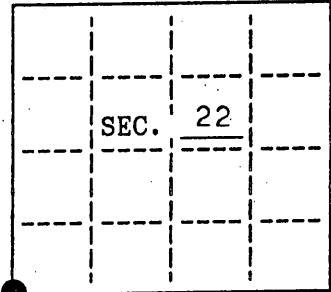


U.S. PUBLIC LAND SURVEY MONUMENT RECORD

Note: This form is intended and designed to fulfill all requirements of Wisconsin Administrative Code, Chapter A-8 7.08 U.S. Public Land Survey Monument Record (3)(a)(b)(c)(d)(e)(f)(g)(h)(i). An additional sheet may be added if necessary to conform with said requirements.

(a) CORNER LOCATION: State Plane Coordinates
 SW corner of Sec. 22 X _____
 Township 37 North Y _____
 Range 4 East Datum Base _____
 Town/City Lynne County of Oneida



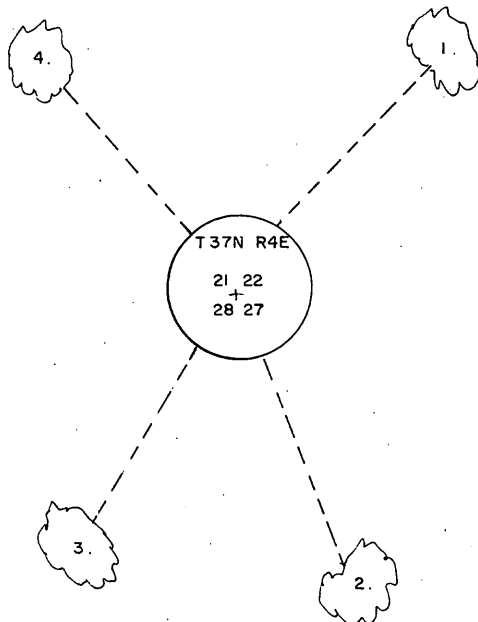
(b) HISTORY OF ORIGINAL CORNER ESTABLISHMENT. Original B.T.'s
 Original Surveyor: Edward Palmer hemlock 18 N72°W, 16 lks.
 Date of Survey: Commenced Oct. 1864 sugar 10 N21°E, 23 lks.
 Completed Oct. 1864 fir 5 S36°E, 16 lks.
 birch 13 S71°W, 37 lks.

(b)(f)(g)(h) Description of monument found at this corner and if it was accepted, state all evidence (material, testimonial, occupational, plats, records, other monuments) used as a basis for accepting. If not accepted or if nothing was found, state evidence used as a basis for establishing location. If reestablished through lost corner proportionate methods, indicate all monuments, distances and directions used to establish. Indicate type of monument and sign post found or set.

Date unknown: Notes by Lytle; SE cor. (y.birch 28 N54°W, 41; y.birch 26 S6°E, 52)

October 19, 1991: I found and accepted a 2-1/2" dia. iron pipe with 3" dia. "Lytle" brass cap 34" above ground and marked as shown. I found the following witnesses: (Lytle) y.birch growing in old stump 7" S4°E, 35.6 feet. I established the following witnesses: set nail in h.maple 5" N44°E, 13.80 feet; set nail in r.maple 4" S21°E, 23.25 feet; set nail in y.birch 6" S31°W, 29.20 feet; set nail in h.maple 6" N41°W, 36.60 feet; set plastic sign post Northwest, 2 feet.

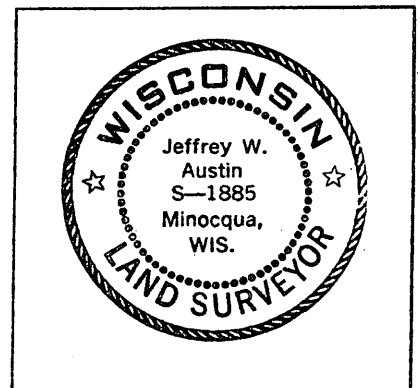
(c)(d)(e) Plan view of corner with ties to at least 4 witness monuments. If in disagreement with previously established corner, show the distances between the two corners and also indicate the ties to the disputed.



1. nail in h.maple 5" N44°E, 13.80 feet
 2. nail in r.maple 4" S21°E, 23.25 feet
 3. nail in y.birch 6" S31°W, 29.20 feet
 4. nail in h.maple 6" N41°W, 36.60 feet
- not to scale

(i) I, Jeffrey W. Austin, Reg. Land Surveyor hereby certify that the corner location on this record was determined by me or under my direction and control and that this U.S. Public Land Survey Monument Record is correct and complete to the best of my knowledge and belief.

Signature *Jeffrey W. Austin* Date 10-28-1991



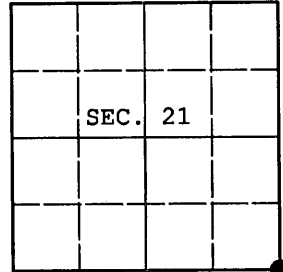
INDEX NO. R-13

3704210000

U.S. PUBLIC LAND SURVEY MONUMENT RECORD

Note: This form is intended and designed to fulfill all requirements of Wisconsin Administrative Code, Chapter A-E 7.08 U.S. Public Land Survey Monument Record (3) (a) (b) (c) (d) (e) (f) (g) (h) (i). An additional sheet may be added if necessary to conform with said requirements.

(a) CORNER LOCATION: Oneida County Coordinates
 Cor. of Secs. 21, 22, 27 & 28 N:
 Township 37 North E:
 Range 4 East of the 4th P.M. Datum:
 Town of Lynne County of Oneida



(b) HISTORY OF ORIGINAL CORNER ESTABLISHMENT

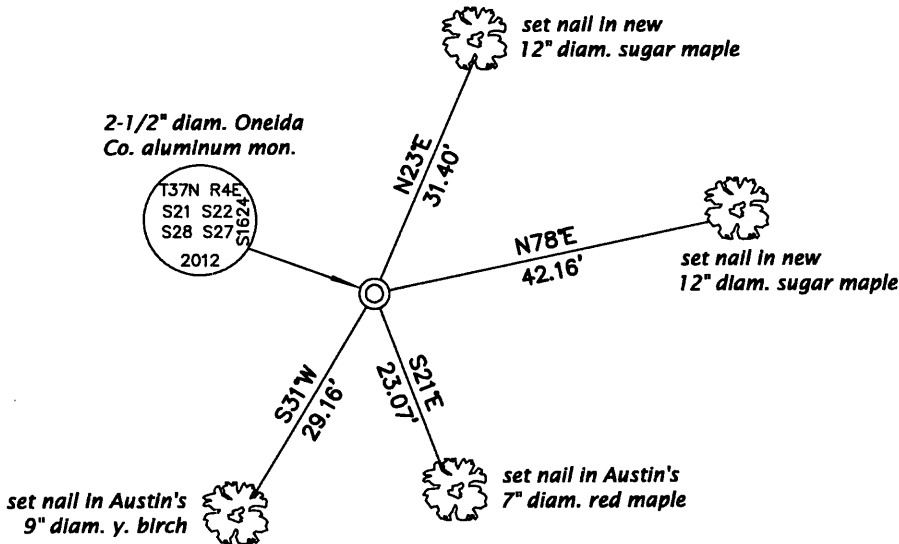
Original Surveyor: Edward D. Palmer Original Accessories:
 Date of Survey: Commenced: Oct. 4, 1864 hemlock 18" N72°W, 16 lks.
 Completed: Oct. 13, 1864 sugar 10" N21°E, 23 lks.
 fir 5" S36°E, 16 lks.
 birch 13" S71°W, 37 lks.

(b) (f) (g) (h) Description of monument found at this corner and if it was accepted, state all evidence (material, testimonial, occupational, plats, records, other monuments) used as a basis for accepting. If not accepted or if nothing was found, state evidence used as basis for establishing location. If re-established through lost corner proportionate methods, indicate all monuments, distances and directions used to establish. Indicate type of monument and sign post found or set.

NOTE: This is a perpetuation of a previous USPLS Monument Record by Jeffrey W. Austin, RLS dated October 28, 1991 and filed in the office of the Oneida County Register of Deeds. A complete history of the corner can be found on the previous monument record. I accept the previous location as a true and faithful perpetuation or reestablishment of the original corner location and further perpetuate it as follows.

October 18, 2012: The brass-capped iron pipe of record was found broken off having been destroyed in a recent logging operation. At the base of the iron pipe, confirmed by previous GPS coordinates, a 2-1/2" diam., 30" long aluminum pipe with 3-1/4" diam. Oneida County aluminum cap projecting 4" above the ground surface was set. The monument leans East, the result of a large rock near the base. Austin's northeast tree is standing dead and his northwest tree has been recently cut. Accessories were found or established as shown below and a white plastic sign post bears Northwest, 1-1/2 ft. dist.

(c) (d) (e) Plan view of corner with ties to at least 4 witness monuments. If in disagreement with previously established corner, show the distances between the two corners and also indicate the ties to the disputed.

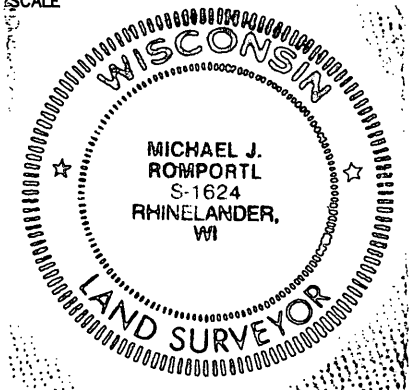


REGISTER OF DEEDS OFFICE
 ONEIDA COUNTY
 FILED

APR 15 2013

AT _____ O'CLOCK _____ M
 KYLE J. FRANSON
 REGISTER OF DEEDS

NO SCALE



(i) I, Michael J. Romportl, Registered Land Surveyor No. S-1624, hereby certify that the corner location on this record was determined by me or under my direction and control and that this U.S. Public Land Survey Monument Record is correct and complete to the best of my knowledge and belief.

Michael J Romportl 2/12/2013
 Signature Date