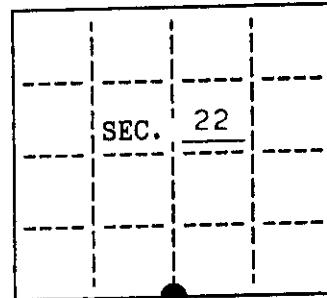


**U.S. PUBLIC LAND SURVEY MONUMENT RECORD**

Note: This form is intended and designed to fulfill all requirements of Wisconsin Administrative Code, Chapter A-E 7.08 U.S. Public Land Survey Monument Record (3)(a)(b)(c)(d)(e)(f)(g)(h)(i). An additional sheet may be added if necessary to conform with said requirements.

(a) CORNER LOCATION: State Plane Coordinates  
 S 1/4 corner of Sec. 22 X \_\_\_\_\_  
 Township 37 North Y \_\_\_\_\_  
 Range 4 East Datum Base \_\_\_\_\_  
 Town/City Lynne County of Oneida



(b) HISTORY OF ORIGINAL CORNER ESTABLISHMENT  
 Original Surveyor: Edward Palmer  
 Date of Survey: Commenced Oct. 1864  
 Completed Oct. 1864

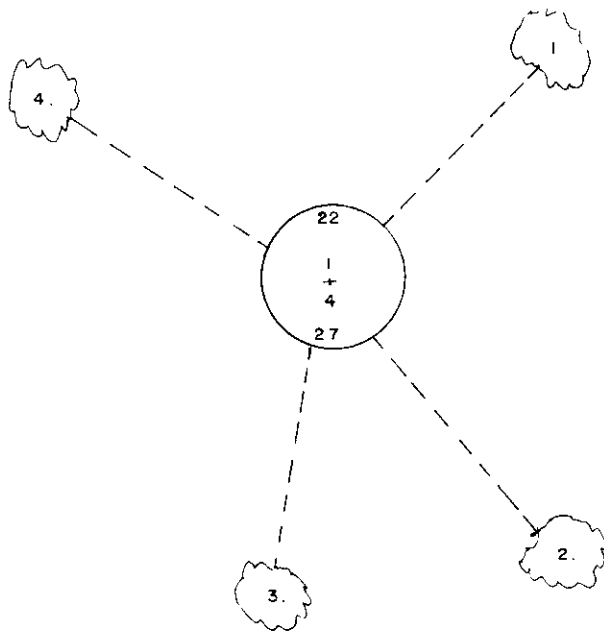
Original B.T.'S  
 hemlock 7 N12°W, 10 lks.  
 cedar 9 S42°E, 9 lks.

(b)(f)(g)(h) Description of monument found at this corner and if it was accepted, state all evidence (material, testimonial, occupational, plats, records, other monuments) used as a basis for accepting. If not accepted or if nothing was found, state evidence used as basis for establishing location. If reestablished through lost corner proportionate methods, indicate all monuments, distances and directions used to establish. Indicate type of monument and sign post found or set.

September 1934: Notes by Lytle; Set 1/4 cor. on line bet. sec. 22 and 27 at 40+01 (maple 16 N13°E, 1.76)

October 12, 1991: I found and accepted a 2-1/2" dia. iron pipe with 2-1/2" dia. brass cap 34" above ground and marked as shown. I found no evidence of the GLO or Lytle surveys. I established the following witnesses: set nail in maple 6" N45°E, 26.73 feet; set nail in maple 6" S39°E, 21.90 feet; set nail in maple 5" S10°W, 25.79 feet; set nail in maple 4" N56°W 24.43 feet; set plastic sign post Southwest, 1-1/2 feet.

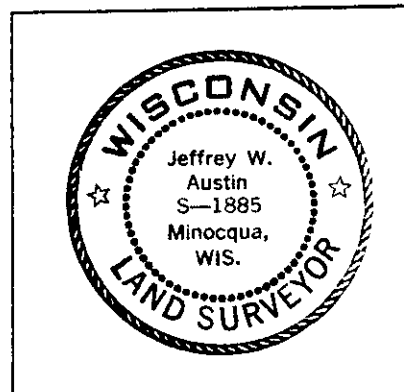
(c)(d)(e) Plan view of corner with ties to at least 4 witness monuments. If in disagreement with previously established corner, show the distances between the two corners and also indicate the ties to the disputed.



1. nail in maple 6" N45°E, 26.73 feet
  2. nail in maple 6" S39°E, 21.90 feet
  3. nail in maple 5" S10°W, 25.79 feet
  4. nail in maple 4" N56°W, 24.43 feet
- not to scale

(i) I, Jeffrey W. Austin, Reg. Land Surveyor hereby certify that the corner location on this record was determined by me or under my direction and control and that this U.S. Public Land Survey Monument Record is correct and complete to the best of my knowledge and belief.

Signature *Jeffrey W. Austin* Date 10-29-1991



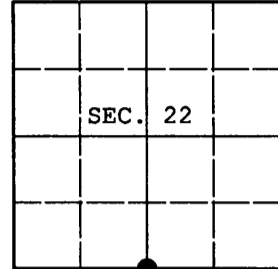
INDEX NO. R-15

3704220020

**U.S. PUBLIC LAND SURVEY MONUMENT RECORD**

Note: This form is intended and designed to fulfill all requirements of Wisconsin Administrative Code, Chapter A-E 7.08 U.S. Public Land Survey Monument Record (3) (a) (b) (c) (d) (e) (f) (g) (h) (i). An additional sheet may be added if necessary to conform with said requirements.

(a) CORNER LOCATION: Oneida County Coordinates  
 1/4 Cor. of Secs. 22 & 27 N: 178,259.288 USft  
 Township 37 North E: 120,630.201 USft  
 Range 4 East of the 4th P.M. Datum: NAD 1983(1991)  
 Town of Lynne County of Oneida



(b) HISTORY OF ORIGINAL CORNER ESTABLISHMENT

Original Surveyor: Edward D. Palmer Original Accessories:  
 Date of Survey: Commenced: Oct. 4, 1864 hemlock 7" N12°W, 10 lks.  
 Completed: Oct. 13, 1864 cedar 9" S42°E, 9 lks.

(b) (f) (g) (h) Description of monument found at this corner and if it was accepted, state all evidence (material, testimonial, occupational, plats, records, other monuments) used as a basis for accepting. If not accepted or if nothing was found, state evidence used as basis for establishing location. If re-established through lost corner proportionate methods, indicate all monuments, distances and directions used to establish. Indicate type of monument and sign post found or set.

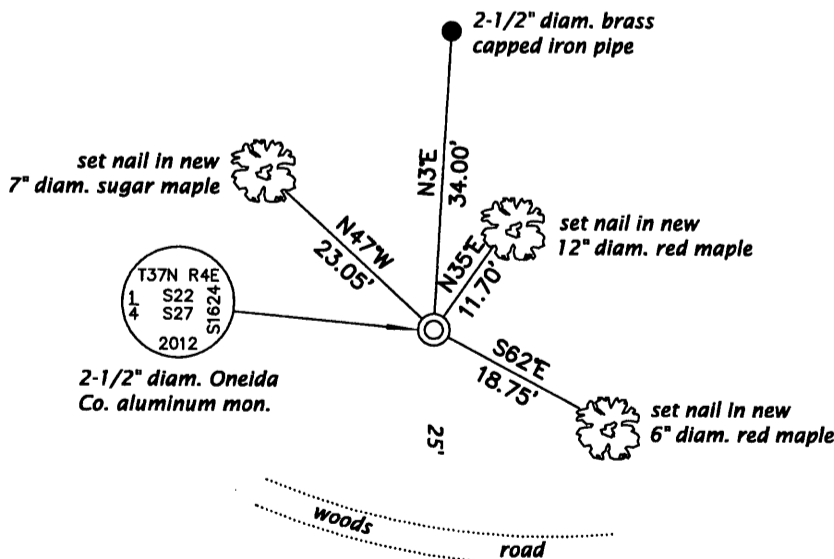
NOTE: This is a correction of a previous USPLS Monument Record by Jeffrey W. Austin, RLS dated October 28, 1991 and filed in the office of the Oneida County Register of Deeds.

September 5, 1934: Notes by Lytle in book 15 on page 1 indicate he positioned the corner by proportionate measure with the following accessory: maple 16" N13°E, 1.76 ch.

November 23, 2012: After evaluating the location of the three corners on this section line, it is clear the existing monument was moved or set incorrectly. Being that the existing monument differs from the proportioned location by about 33 feet, it is possible that the falling was measured or recorded incorrectly by 1 chain. As the existing monument has not been used in any surveying activity, it was deemed best to correct the corner location and position it by proportionate measure as shown on map number C-2776 filed in the office of the Oneida County Surveyor. At the corner point a 2-1/2" diam., 30" long aluminum pipe with 3-1/4" diam. Oneida County aluminum cap projecting 3" above the ground surface was set. A blue/black DEEP-1 magnet was set under the monument. Accessories were established as shown below and a white plastic sign post bears Northeast, 1 ft. dist.

The coordinates shown were derived from two independent RTK observations of the corner point and are based on the WISCORS network.

(c) (d) (e) Plan view of corner with ties to at least 4 witness monuments. If in disagreement with previously established corner, show the distances between the two corners and also indicate the ties to the disputed.

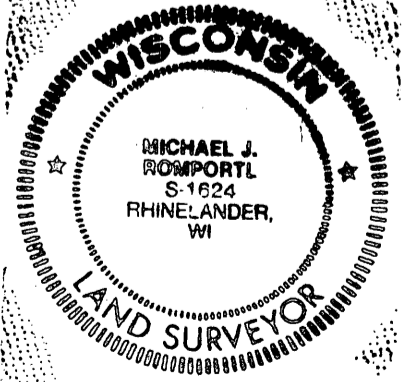


REGISTER OF DEEDS OFFICE  
 ONEIDA COUNTY  
 FILED

APR 15 2013

AT \_\_\_\_\_ O'CLOCK \_\_\_\_\_ M  
 KYLE J. FRANSON  
 REGISTER OF DEEDS

NO SCALE



(i) I, Michael J. Romportl, Registered Land Surveyor No. S-1624, hereby certify that the corner location on this record was determined by me or under my direction and control and that this U.S. Public Land Survey Monument Record is correct and complete to the best of my knowledge and belief.

Michael J Romportl 2/12/2013  
 Signature Date

3704220020 (INDEX NO. R-15)