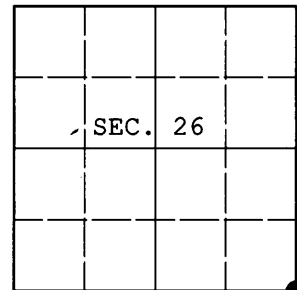


U.S. PUBLIC LAND SURVEY MONUMENT RECORD

Note: This form is intended and designed to fulfill all requirements of Wisconsin Administrative Code, Chapter A-E 7.08 U.S. Public Land Survey Monument Record (3) (a) (b) (c) (d) (e) (f) (g) (h) (i). An additional sheet may be added if necessary to conform with said requirements.

(a) CORNER LOCATION: WISCRS (Oneida County)
 Cor. of Secs. 25, 26, 35 & 36 N: 172,707.171 USft
 Township 37 North E: 128,447.976 USft
 Range 4 East of the 4th P.M. Datum: NAD 1983(1991)
 Town of Lynne County of Oneida



(b) HISTORY OF ORIGINAL CORNER ESTABLISHMENT

Original Surveyor: Edward Palmer Original Accessories:
 Date of Survey: Commenced: Oct. 4, 1864 fir 5" N28°W, 25 lks.
 Completed: Oct. 13, 1864 fir 6" N49°E, 26 lks.
 hemlock 9" S37°E, 8 lks.
 fir 10" S50°W, 29 lks.

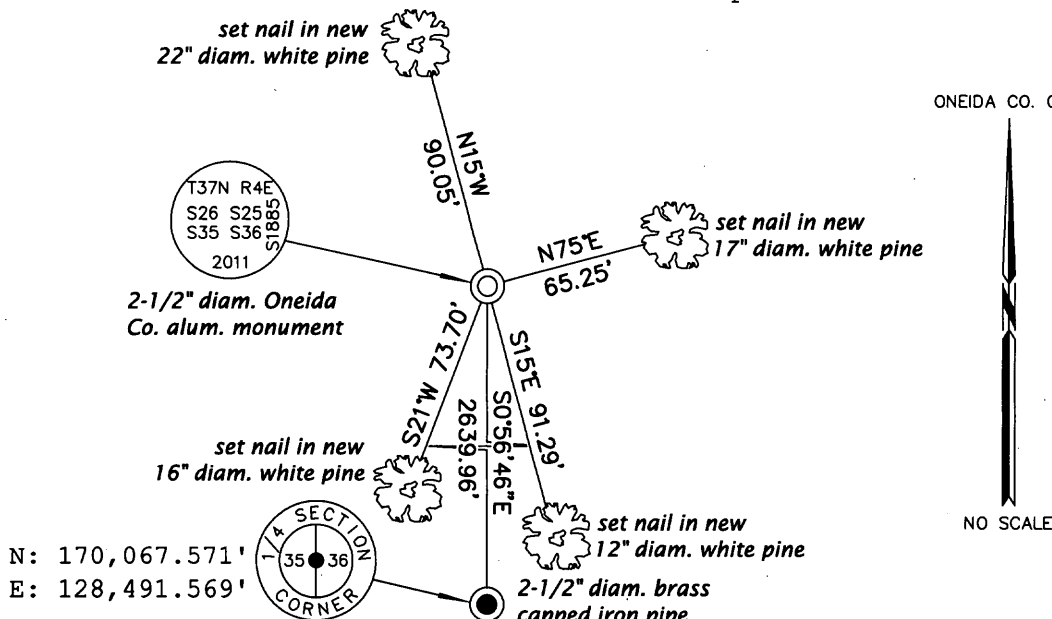
(b) (f) (g) (h) Description of monument found at this corner and if it was accepted, state all evidence (material, testimonial, occupational, plats, records, other monuments) used as a basis for accepting. If not accepted or if nothing was found, state evidence used as basis for establishing location. If re-established through lost corner proportionate methods, indicate all monuments, distances and directions used to establish. Indicate type of monument and sign post found or set.

December 27, 1934: In Lytle book 15, on page 16, Lytle indicates he recovered this corner and from it, proportioned the North and West quarter-section corners of section 36.

December 2, 2011: I was unable to recover any evidence of Lytle's survey or the GLO survey. I also searched for and was unable to recover Lytle's work at the North quarter-section corner of section 36. Based on my previous recovery of the West quarter-section corner of section 36, I positioned this corner by "doubling over" the line connecting the Southwest corner of section 36 and the West quarter-section corner of section 36. Measurements to adjoining corners can be found on map C-2275 filed in the office of the Oneida County Surveyor. The length of the resulting North line of section 36 agrees very favorably with the distance returned by Lytle. At the corner point, I set a 2-1/2" diam., 30" long aluminum pipe with 3-1/4" diam. Oneida Co. aluminum cap projecting 6" above the ground surface. I established accessories as shown below and set a white plastic sign post bearing Northeast, 1 ft. dist.

The coordinates of 3704352000 were derived from a direct static GPS observation referenced to the published geographic coordinates of Oneida County control stations 203S and 291S. The coordinates of 3704260000 were derived from offset static GPS observations referenced to the published geographic coordinates of Oneida County control stations 203S and 291S.

(c) (d) (e) Plan view of corner with ties to at least 4 witness monuments. If in disagreement with previously established corner, show the distances between the two corners and also indicate the ties to the disputed.



REGISTER OF DEEDS OFFICE
 ONEIDA COUNTY
 FILED

MAR 11 2013

(i) I, Jeffrey W. Austin, Registered Land Surveyor No. S-1885, hereby certify that the corner location on this record was determined by me or under my direction and control and that this U.S. Public Land Survey Monument Record is correct and complete to the best of my knowledge and belief.

[Handwritten Signature]
 Signature

FEB 25, 2013
 Date

AT _____ O'CLOCK _____ M
 KYLE J. FRANSON
 REGISTER OF DEEDS