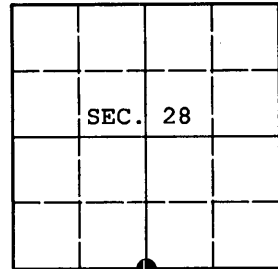


U.S. PUBLIC LAND SURVEY MONUMENT RECORD

Note: This form is intended and designed to fulfill all requirements of Wisconsin Administrative Code, Chapter A-E 7.08 U.S. Public Land Survey Monument Record (3) (a) (b) (c) (d) (e) (f) (g) (h) (i). An additional sheet may be added if necessary to conform with said requirements.

(a) CORNER LOCATION: Oneida County Coordinates
 1/4 Cor. of Secs. 28 & 33 N: 172,827.990 USft
 Township 37 North E: 115,150.834 USft
 Range 4 East of the 4th P.M. Datum: NAD 1983(1991)
 Town of Lynne County of Oneida



(b) HISTORY OF ORIGINAL CORNER ESTABLISHMENT

Original Surveyor: Edward D. Palmer Original Accessories:
 Date of Survey: Commenced: Oct. 4, 1864 cedar 7" N70°W, 16 lks.
 Completed: Oct. 13, 1864 hemlock 9" S20°W, 23 lks.

(b) (f) (g) (h) Description of monument found at this corner and if it was accepted, state all evidence (material, testimonial, occupational, plats, records, other monuments) used as a basis for accepting. If not accepted or if nothing was found, state evidence used as basis for establishing location. If re-established through lost corner proportionate methods, indicate all monuments, distances and directions used to establish. Indicate type of monument and sign post found or set.

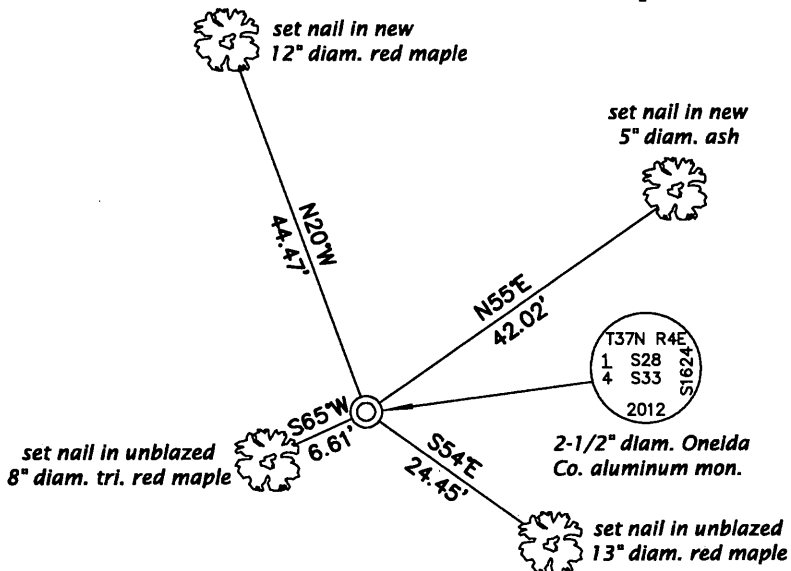
February 7, 1939: Notes by Gobler in Book 97 on Page 15 indicate he had only a temporary picket at this corner point.

NOTE: Prior to monumenting this corner, we met with Wayne Bruesewitz, an adjacent landowner. Mr. Bruesewitz indicated that boundaries in the area have historically been marked approximate, for timber harvesting purposes only. He also indicated that the proportioned location is in keeping with his understanding of the general corner location.

November 9, 2012: An extensive search for evidence of the General Land Office survey and any subsequent resurveys mentioned above was performed. Having found none, the corner was positioned by proportionate measure as shown on map number C-2776 filed in the office of the Oneida County Surveyor. The GLO topographic calls were also evaluated to confirm the validity of the position. At the corner point a 2-1/2" diam., 30" long aluminum pipe with 3-1/4" diam. Oneida County aluminum cap projecting 4" above the ground surface was set. Accessories were established as shown below and a white plastic sign post bears Northeast, 1 ft. dist.

The coordinates shown were derived from two independent RTK observations of the corner point and are based on the WISCORS network.

(c) (d) (e) Plan view of corner with ties to at least 4 witness monuments. If in disagreement with previously established corner, show the distances between the two corners and also indicate the ties to the disputed.

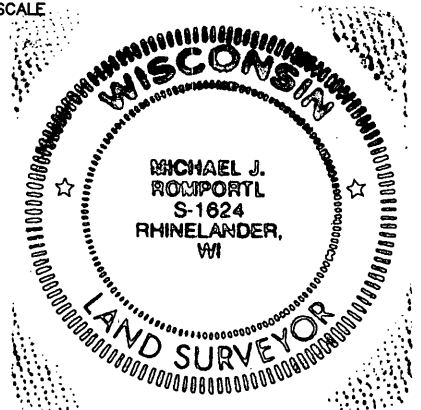


REGISTER OF DEEDS OFFICE
 ONEIDA COUNTY
 FILED

APR 15 2013

AT _____ O'CLOCK _____ M
 KYLE J. FRANSON
 REGISTER OF DEEDS

NO SCALE



(i) I, Michael J. Romportl, Registered Land Surveyor No. S-1624, hereby certify that the corner location on this record was determined by me or under my direction and control and that this U.S. Public Land Survey Monument Record is correct and complete to the best of my knowledge and belief.

Michael J Romportl 2/12/2013
 Signature Date