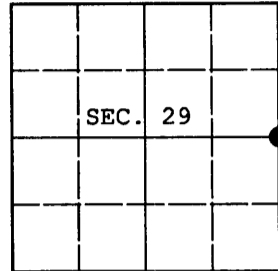


U.S. PUBLIC LAND SURVEY MONUMENT RECORD

Note: This form is intended and designed to fulfill all requirements of Wisconsin Administrative Code, Chapter A-E 7.08 U.S. Public Land Survey Monument Record (3) (a) (b) (c) (d) (e) (f) (g) (h) (i). An additional sheet may be added if necessary to conform with said requirements.

(a) CORNER LOCATION: Oneida County Coordinates
1/4 Cor. of Secs. 28 & 29 N: 175,471.224 USft
Township 37 North E: 112,580.166 USft
Range 4 East of the 4th P.M. Datum: NAD 1983(1991)
Town of Lynne County of Oneida



(b) HISTORY OF ORIGINAL CORNER ESTABLISHMENT

Original Surveyor: Edward D. Palmer Original Accessories:
Date of Survey: Commenced: Oct. 4, 1864 birch 13" N32°W, 28 lks.
Completed: Oct. 13, 1864 hemlock 10" S27°E, 7 lks.

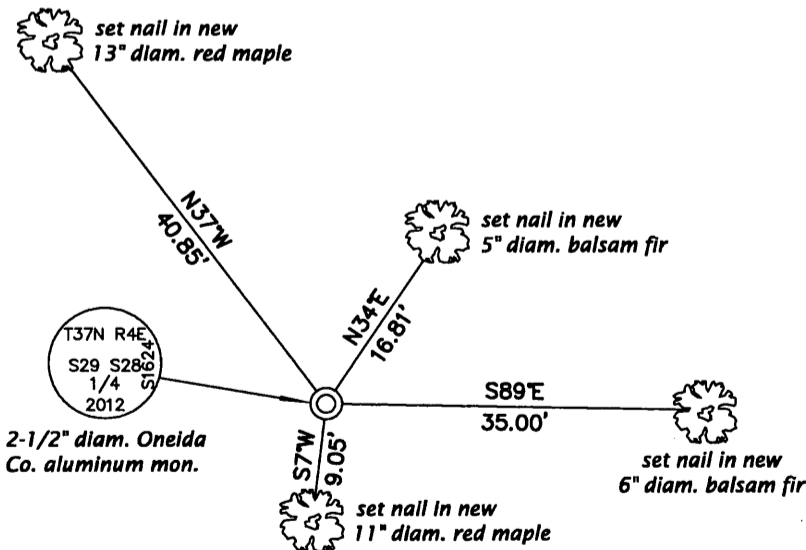
(b) (f) (g) (h) Description of monument found at this corner and if it was accepted, state all evidence (material, testimonial, occupational, plats, records, other monuments) used as a basis for accepting. If not accepted or if nothing was found, state evidence used as basis for establishing location. If re-established through lost corner proportionate methods, indicate all monuments, distances and directions used to establish. Indicate type of monument and sign post found or set.

February, 1939: Notes by Gobler in book 97 on page 15 and 16 indicate he recovered the original corner marked by a squared poplar and witnessed by the GLO birch bearing tree.

October 23, 2012: An extensive search for evidence of the General Land Office survey and any subsequent resurveys mentioned above was performed. Having found none, the corner was positioned using Gobler's record distances from the North and South as shown on map number C-2776 filed in the office of the Oneida County Surveyor. As it is impossible to determine Gobler's directions, the corner was established on a straight line between the controlling section corners. At the corner point a 2-1/2" diam., 30" long aluminum pipe with 3-1/4" diam. Oneida County aluminum cap projecting 3" above the ground surface was set. Accessories were established as shown below and a white plastic sign post bears Southeast, 1 ft. dist.

The coordinates shown were derived from two independent RTK observations of the corner point and are based on the WISCORS network.

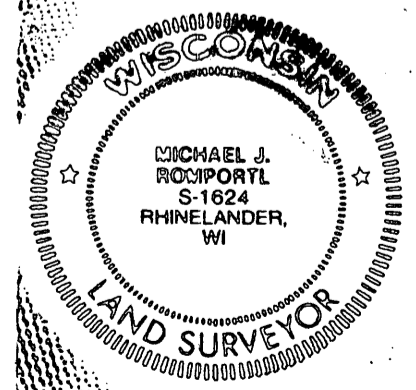
(c) (d) (e) Plan view of corner with ties to at least 4 witness monuments. If in disagreement with previously established corner, show the distances between the two corners and also indicate the ties to the disputed.



REGISTER OF DEEDS OFFICE
ONEIDA COUNTY
FILED

APR 15 2013

AT _____ O'CLOCK _____ M
KYLE J. FRANSON
REGISTER OF DEEDS



(i) I, Michael J. Romportl, Registered Land Surveyor No. S-1624, hereby certify that the corner location on this record was determined by me or under my direction and control and that this U.S. Public Land Survey Monument Record is correct and complete to the best of my knowledge and belief.

Michael J Romportl 2/13/2013
Signature Date