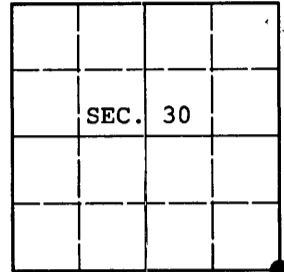


**U.S. PUBLIC LAND SURVEY MONUMENT RECORD**

Note: This form is intended and designed to fulfill all requirements of Wisconsin Administrative Code, Chapter A-E 7.08 U.S. Public Land Survey Monument Record (3) (a) (b) (c) (d) (e) (f) (g) (h) (i). An additional sheet may be added if necessary to conform with said requirements.

(a) CORNER LOCATION: Oneida County Coordinates  
 Cor. of Secs. 29, 30, 31 & 32 N: 172,817.758 USft  
 Township 37 North E: 107,406.542 USft  
 Range 4 East of the 4th P.M. Datum: NAD 1983(1991)  
 Town of Lynne County of Oneida



(b) HISTORY OF ORIGINAL CORNER ESTABLISHMENT

Original Surveyor: Edward D. Palmer Original Accessories:  
 Date of Survey: Commenced: Oct. 4, 1864 hemlock 9" N20°W, 10 lks.  
 Completed: Oct. 13, 1864 hemlock 14" N60°E, 9 lks.  
 hemlock 12" S35°E, 13 lks.  
 birch 12" S27°W, 12 lks.

(b) (f) (g) (h) Description of monument found at this corner and if it was accepted, state all evidence (material, testimonial, occupational, plats, records, other monuments) used as a basis for accepting. If not accepted or if nothing was found, state evidence used as basis for establishing location. If re-established through lost corner proportionate methods, indicate all monuments, distances and directions used to establish. Indicate type of monument and sign post found or set.

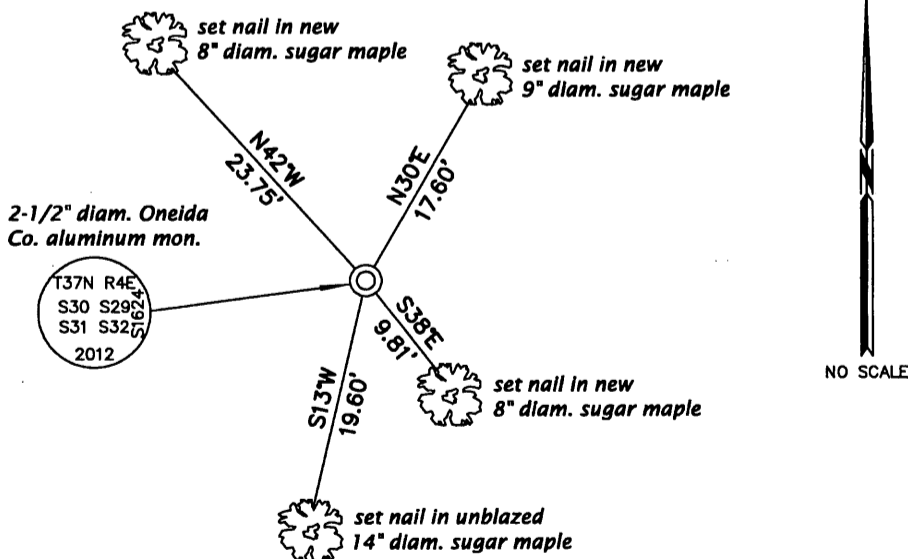
November 7, 1939: Notes by Gobler in Book 97 on Page 19 indicate he was running a random line West past this point with no mention of finding the original corner.

NOTE: Prior to monumenting this corner, we met with Robert Lepien, an adjacent landowner. Mr. Lepien indicated that boundaries in the area have historically been marked approximate, for timber harvesting purposes only. He also indicated that the proportioned location is in keeping with his understanding of the general corner location.

October 18, 2012: An extensive search for evidence of the General Land Office survey and any subsequent resurveys mentioned above was performed. Having found none, the corner was positioned by proportionate measure as shown on map number C-2776 filed in the office of the Oneida County Surveyor. The GLO topographic calls were also evaluated to confirm the validity of the position. At the corner point a 2-1/2" diam., 30" long aluminum pipe with 3-1/4" diam. Oneida County aluminum cap projecting 4" above the ground surface was set. Accessories were established as shown below and a white plastic sign post bears Northwest, 1 ft. dist.

The coordinates shown were derived from two independent RTK observations of the corner point and are based on the WISCORS network.

(c) (d) (e) Plan view of corner with ties to at least 4 witness monuments. If in disagreement with previously established corner, show the distances between the two corners and also indicate the ties to the disputed.

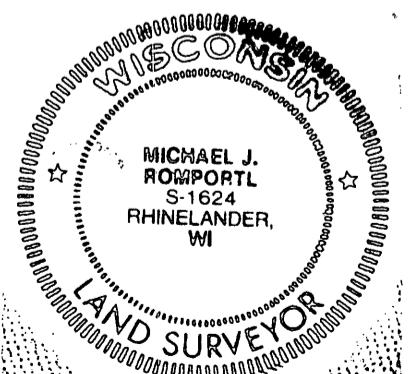


REGISTER OF DEEDS OFFICE  
 ONEIDA COUNTY  
 FILED

APR 15 2013

AT \_\_\_\_\_ O'CLOCK \_\_\_\_\_ M  
 KYLE J. FRANSON  
 REGISTER OF DEEDS

(i) I, Michael J. Romportl, Registered Land Surveyor No. S-1624, hereby certify that the corner location on this record was determined by me or under my direction and control and that this U.S. Public Land Survey Monument Record is correct and complete to the best of my knowledge and belief.



Michael J Romportl 2/13/2012  
 Signature Date