

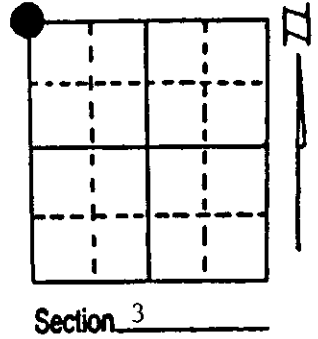
U.S. PUBLIC LAND SURVEY MONUMENT RECORD

Note: This form is intended and designed to fulfill all requirements of Wisconsin Administrative Code, Chapter A-E 7.08 U.S. Public Land Survey Monument Record (3) (a) (b) (c) (d) (e) (f) (g) (h) (i). An additional sheet may be added if necessary to conform with said requirements.

(a) Corner location: Township 36 North
 Range 4 East/West

Town/City/Village Lynne

County Oneida



(b) (f) (g) (h) Description of monument found at this corner and if it was accepted, state all evidence (material, testimonial, occupational, plats, records, other monuments) used as a basis for accepting. If not accepted or if nothing was found, state evidence used as basis for establishing location. If reestablished through lost corner proportionate methods, indicate all monuments, distances and directions used to establish. Indicate type of monument found or set and sign post.

1860 - James McBride established this corner at 80.00 chains and set a wood post for Section Corner/4 BTs:
 20" Hemlock, N50°E, 29 Links (19.14') 20" Hemlock, S28°W, 12 Links (7.92')
 15" Hemlock, S31°E, 18 Links (11.88') 20" Hemlock, N79°W, 30 Links (19.80')

11/20/1915 - D. H. Vaughan ran from two miles South and found stub of one BT. He made no new ones. (172.96 chains, 2.37 chains short of GLO.)

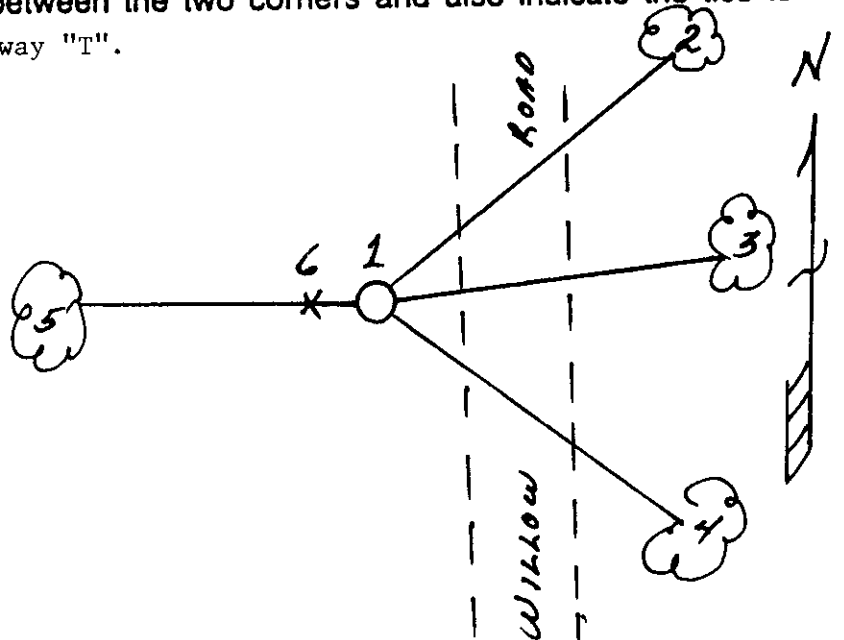
11/6/1934 - A.J. Lytle ran from one mile East and found remains of three original BTs. (Northeast one gone.) He was running traverse of roads and tying them to GLO survey. Distance South to Muskellunge Lake Road was 39.94 chains (2636.04') and corner was 46 links (30.46') ^{West} of County Trunk "T" centerline. *ms*

3/29/1995 - Milo E. Stefan found 2" x 60" iron pipe/brass cap pushed up in bulldozed pile near our search area. We reset this monument in mound of stone 46 Links West of road centerline and 2636.04' Northerly of intersection of Muskellunge Lake

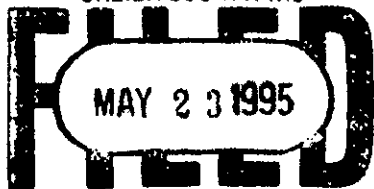
(c) (d) (e) Plan view of corner with ties to at least 4 witness monuments. If in disagreement with previously established corner, show the distances between the two corners and also indicate the ties to the disputed corner. road and County Highway "T".

- 1) 2" x 60" iron pipe/brass cap.
- 2) 8" Sugar Maple, N44°E, 134.91'.
- 3) 24" White Spruce, N77°E, 129.73'.
- 4) 10" Red Maple, S69°E, 127.35'.
- 5) 8" Tamarack, West, 136.00'.
- 6) Plastic Sign Post, West, 1.9'.

Distances to nail in side of BTs.
 Stump blaze scribed "BT".
 BT tags on face of each BT.



REGISTER OF DEEDS OFFICE
 ONEIDA COUNTY, WIS



At _____ O'Clock _____ M
THOMAS H. LEIGHTON
 REGISTER OF DEEDS
 Milo E. Stefan

(i) I, _____
 (type or print name) certify that the corner location on this record was determined by me or under my direction and control and that this U.S. Public Land Survey Monument Record is correct and complete to the best of my knowledge and belief.



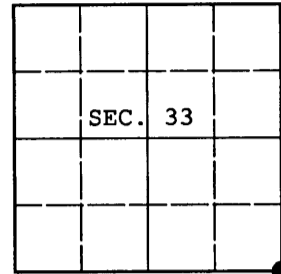
Milo E. Stefan
 Signature

May 11, 1995
 Date

U.S. PUBLIC LAND SURVEY MONUMENT RECORD

Note: This form is intended and designed to fulfill all requirements of Wisconsin Administrative Code, Chapter A-E 7.08 U.S. Public Land Survey Monument Record (3) (a) (b) (c) (d) (e) (f) (g) (h) (i). An additional sheet may be added if necessary to conform with said requirements.

(a) CORNER LOCATION: Plane Coordinates
 Cor. of Secs. 3, 4, 33 & 34 N: 167,407.768 USft
 Township 36 & 37 North E: 118,121.647 USft
 Range 4 East of the 4th P.M. Datum: NAD 1983(1991)
 Town of Lynne County of Oneida



(b) HISTORY OF ORIGINAL CORNER ESTABLISHMENT

Original Surveyor: Alexander Anderson Original Accessories:
 Date of Survey: Commenced: July, 1864 hemlock 15" S31°E, 18 lks.
 Completed: July, 1864 hemlock 20" S28°W, 12 lks.
 hemlock 20" N79°W, 30 lks.
 hemlock 20" N50°E, 29 lks.

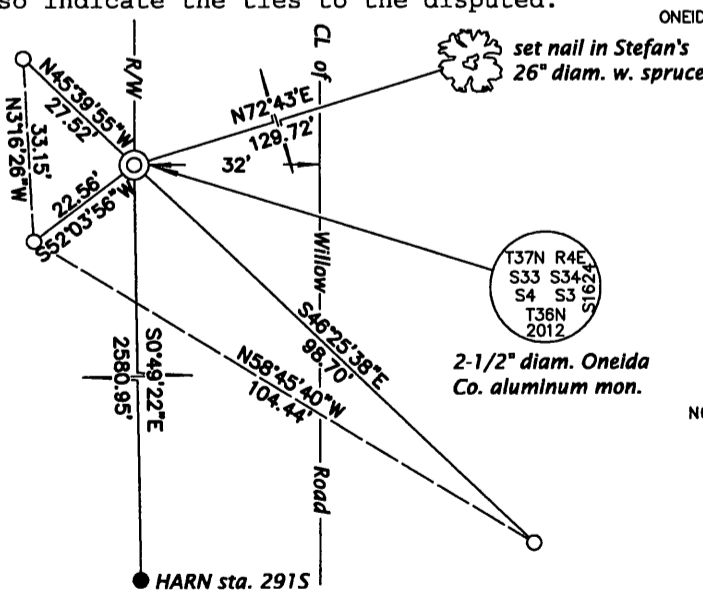
(b) (f) (g) (h) Description of monument found at this corner and if it was accepted, state all evidence (material, testimonial, occupational, plats, records, other monuments) used as a basis for accepting. If not accepted or if nothing was found, state evidence used as basis for establishing location. If re-established through lost corner proportionate methods, indicate all monuments, distances and directions used to establish. Indicate type of monument and sign post found or set.

NOTE: See Lytle book 15, page 6 and Dorr/Vaughan book, page 2. As a result of Lytle and Vaughan both claiming to have found evidence of the GLO survey, a meeting of myself, James D. Rein, RLS and Jeffrey W. Austin, RLS was arranged to discuss the matter. It was the consensus of this group that insufficient evidence exists to support the Vaughan location in light of the fact that the trees he recovered did not match the GLO field notes. Also, Lytle's monument was clearly stamped "ORIG. GOVT. COR." and stood as such unchallenged for many decades.

October 1, 2012: I found the sheared-off base of Lytle's capped monument in a collar of stone. I re-established the location with GPS using the published coordinates and found it to be in agreement with the remains of the monument and the collar of stone. I set a 2-1/2" diam., 30" long aluminum pipe with 3-1/4" diam. Oneida County aluminum cap flush with the collar of stone. Under the monument, I deposited an orange/black DEEP-1 magnet. I found or established accessories as shown below and set a white plastic sign post bearing East, 1-1/2 ft. dist.

The coordinates shown are those published by Oneida County and have been confirmed during the course of this work.

(c) (d) (e) Plan view of corner with ties to at least 4 witness monuments. If in disagreement with previously established corner, show the distances between the two corners and also indicate the ties to the disputed.

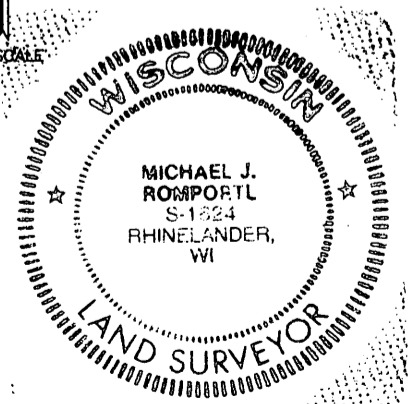


REGISTER OF DEEDS OFFICE
 ONEIDA COUNTY
 FILED

APR 15 2013

AT _____ O'CLOCK _____ M
 KYLE J. FRANSON
 REGISTER OF DEEDS

NO SCALE



(i) I, Michael J. Romportl, Registered Land Surveyor No. S-1624, hereby certify that the corner location on this record was determined by me or under my direction and control and that this U.S. Public Land Survey Monument Record is correct and complete to the best of my knowledge and belief.

Michael J Romportl 2/12/2013
 Signature Date