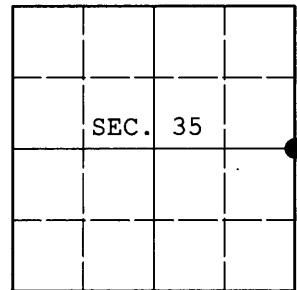


**U.S. PUBLIC LAND SURVEY MONUMENT RECORD**

Note: This form is intended and designed to fulfill all requirements of Wisconsin Administrative Code, Chapter A-E 7.08 U.S. Public Land Survey Monument Record (3) (a) (b) (c) (d) (e) (f) (g) (h) (i). An additional sheet may be added if necessary to conform with said requirements.

(a) CORNER LOCATION: Plane Coordinates  
 1/4 Cor. of Secs. 35 & 36 N:  
 Township 37 North E:  
 Range 4 East of the 4th P.M. Datum:  
 Town of Lynne County of Oneida



(b) HISTORY OF ORIGINAL CORNER ESTABLISHMENT

Original Surveyor: Edward Palmer Original Accessories:  
 Date of Survey: Commenced: Oct. 4, 1864 birch 7" N67°W, 8 lks.  
 Completed: Oct. 13, 1864 fir 10" S36°E, 17 lks.

(b) (f) (g) (h) Description of monument found at this corner and if it was accepted, state all evidence (material, testimonial, occupational, plats, records, other monuments) used as a basis for accepting. If not accepted or if nothing was found, state evidence used as basis for establishing location. If re-established through lost corner proportionate methods, indicate all monuments, distances and directions used to establish. Indicate type of monument and sign post found or set.

December 27, 1934: In Lytle book 15, on page 16, Lytle indicates he proportioned the corner with the following accessories: WP 18" S5°E, 160-3/4 lks.

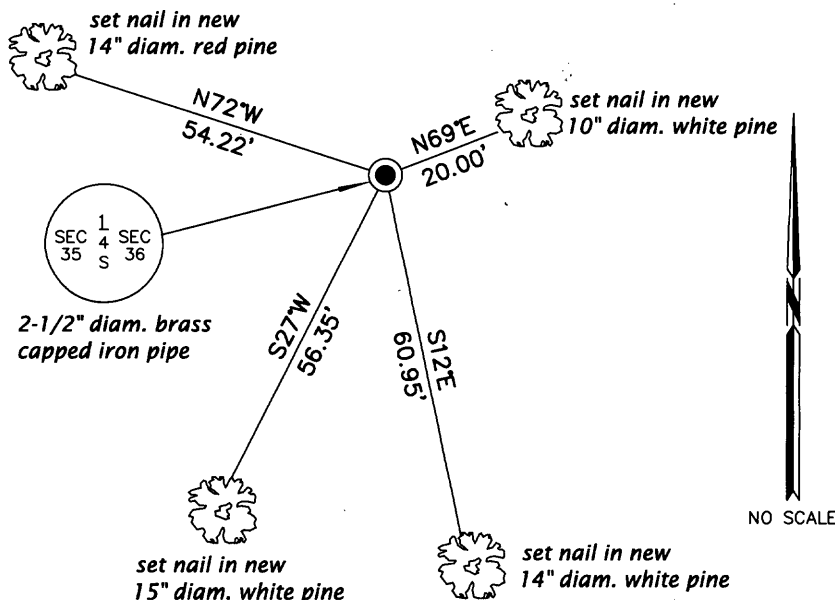
October 15, 2011: I found and accepted Lytle's monument, a 2-1/2" diam. iron pipe with 3" diam. thread-on Lytle brass cap projecting 20" above the ground surface. I was unable to locate Lytle's tree, but the distance South to 3704350000 agrees very favorably with Lytle's record. I established accessories as shown below and set a white plastic sign post bearing Southeast, 1 ft. dist.

REGISTER OF DEEDS OFFICE  
 ONEIDA COUNTY  
**FILED**

JAN 16 2012

AT \_\_\_\_\_ O'CLOCK \_\_\_\_\_ M  
**THOMAS H. LEIGHTON**  
 REGISTER OF DEEDS

(c) (d) (e) Plan view of corner with ties to at least 4 witness monuments. If in disagreement with previously established corner, show the distances between the two corners and also indicate the ties to the disputed.



(i) I, Jeffrey W. Austin, Registered Land Surveyor No. S-1885, hereby certify that the corner location on this record was determined by me or under my direction and control and that this U.S. Public Land Survey Monument Record is correct and complete to the best of my knowledge and belief.

  
 Signature

DEC. 31, 2011  
 Date

