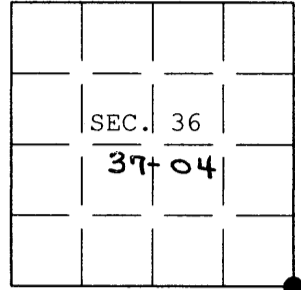


U.S. PUBLIC LAND SURVEY MONUMENT RECORD

Note: This form is intended and designed to fulfill all requirements of Wisconsin Administrative Code, Chapter A-E 7.08 U.S. Public Land Survey Monument Record (3) (a) (b) (c) (d) (e) (f) (g) (h) (i). An additional sheet may be added if necessary to conform with said requirements.

(a) CORNER LOCATION: Plane Coordinates
 Cor. of Secs. 36, 31, 1 & 6 X:
 Township 36 & 37 North Y:
 Range 4 & 5 East of the 4th P.M. Datum:
 Town of Lynne County of Oneida



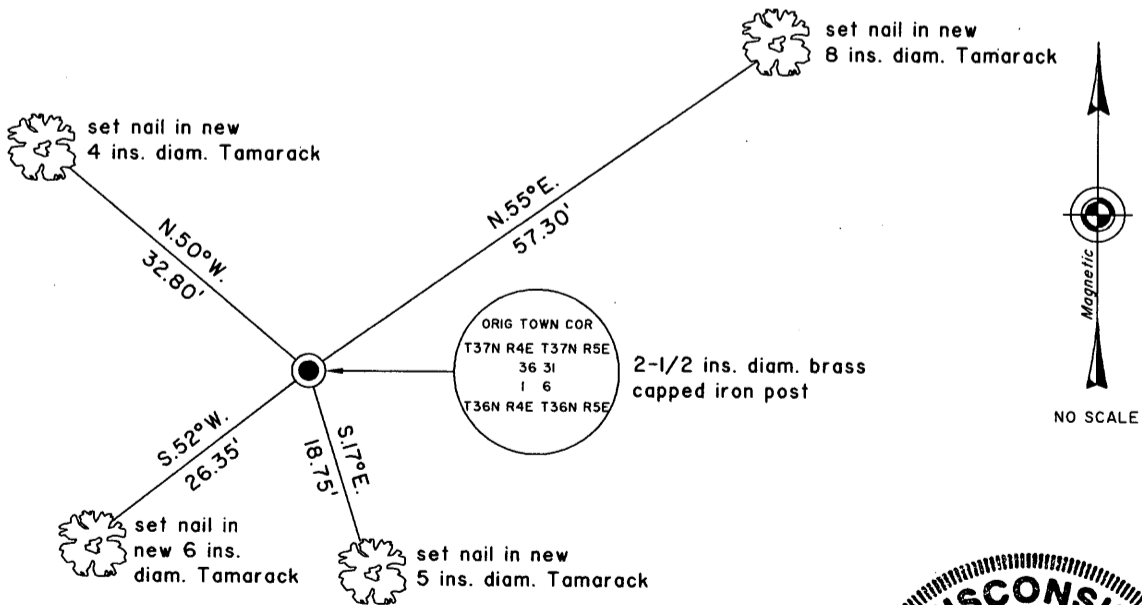
(b) HISTORY OF ORIGINAL CORNER ESTABLISHMENT

Original Surveyor: Millard, Alfred Original Accessories:
 Date of Survey: Commenced Aug. 1860 Spruce 6" N.30°W., 10 lks.
 Completed Sept. 1860 Spruce 4" S.65°E., 3 lks.
 Tamarack 6" N.35°E., 29 lks.
 Tamarack 6" S.50°W., 32 lks.

(b) (f) (g) (h) Description of monument found at this corner and if it was accepted, state all evidence (material, testimonial, occupational, plats, records, other monuments) used as a basis for accepting. If not accepted or if nothing was found, state evidence used as basis for establishing location. If re-established through lost corner proportionate methods, indicate all monuments, distances and directions used to establish. Indicate type of monument and sign post found or set.

1 July 2004: I found and accepted a 2-1/2 ins. diam. iron post, projecting 18 ins. above the bog with Lytle brass cap mkd. as shown below. I found the GLO blazed tamarack stump 7" N.34°E., 20 ft.; the GLO blazed tamarack stump 6" S.48°W., 22 ft. and the GLO rotted spruce stump N.30°W., 6-1/2 ft. I established accessories as shown below and set a white plastic sign post bearing Northwest, 1 ft. dist.

(c) (d) (e) Plan view of corner with ties to at least 4 witness monuments. If in disagreement with previously established corner, show the distances between the two corners and also indicate the ties to the disputed.



(i) I, Jeffrey W. Austin, Registered Land Surveyor No. S-1885, hereby certify upon honor that the corner location on this record was determined by me or under my direction and control and that this U.S. Public Land Survey Monument Record is correct and complete to the best of my knowledge and belief.

[Handwritten Signature]

9 FEB 2005

Signature

Date



INDEX NO. 2-25

3704360000