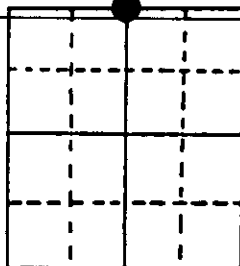


U.S. PUBLIC LAND SURVEY MONUMENT RECORD

Note: This form is intended and designed to fulfill all requirements of Wisconsin Administrative Code, Chapter A-E 7.08 U.S. Public Land Survey Monument Record (3) (a) (b) (c) (d) (e) (f) (g) (h) (i). An additional sheet may be added if necessary to conform with said requirements.

(a) Corner location: Township 36 North
 Range 4 East/West
 Town/City/Village Lynne
 County Oneida



Section 1

(b) (f) (g) (h) Description of monument found at this corner and if it was accepted, state all evidence (material, testimonial, occupational, plats, records, other monuments) used as a basis for accepting. If not accepted or if nothing was found, state evidence used as basis for establishing location. If reestablished through lost corner proportionate methods, indicate all monuments, distances and directions used to establish. Indicate type of monument found or set and sign post.

1860 - James McBride established this corner and set a wood post with BTs:
 7" Hemlock, N22°E, 14 Links 12" Hemlock, S47°W, 18 Links

1940's - A. J. Lytle re-established corner and stamped monument to read "B.F. Dorr's Survey".

3/14/1991 - Milo E. Stefan accepts this monument as the corner position and made new BTs and set plastic sign post. Corner lies 100 feet East of hardwood into newly established Red Pine plantation.

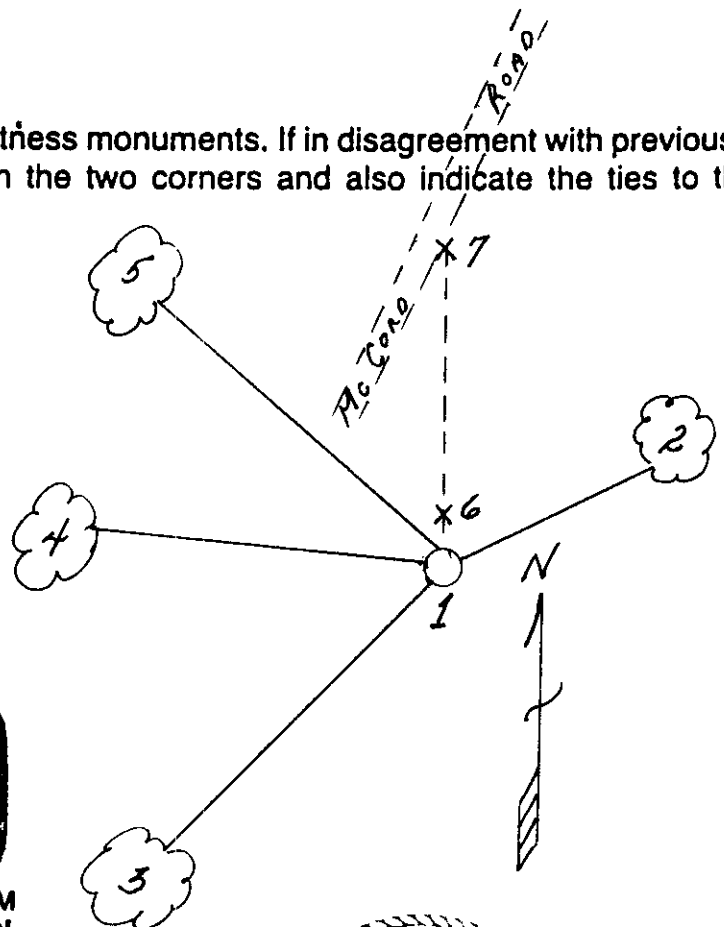
10/20/1896 - B.F. Dorr used corner to subdivide Section 1. He called both original BTs as stumps.

(c) (d) (e) Plan view of corner with ties to at least 4 witness monuments. If in disagreement with previously established corner, show the distances between the two corners and also indicate the ties to the disputed corner.

- 1) 2" x 60" iron pipe/brass pipe cap
- *2) 1" Red Pine, N72°E, 22.35 feet
- 3) 12" Red Maple, S43°W, 102.64 feet
- 4) 8" Sugar Maple, N86°W, 83.15 feet
- 5) 12" Sugar Maple, N50°W, 103.96 feet
- 6) Plastic sign post, North, .5 feet
- 7) Location Poster Post and tag on East side of McCord Road - states corner bears South 1163 feet

Distances to nail on side of BTs
 "BT" scribed in stump blaze

*This BT not scribed

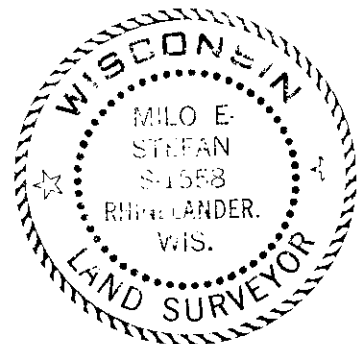


REGISTER OF DEEDS OFFICE
 ONEIDA COUNTY, WIS.
FILED
 APR 8 1991
 At _____ O'Clock _____ M
THOMAS H. LEIGHTON
 REGISTER OF DEEDS

(i) I, Milo E. Stefan
 (type or print name) certify that the corner location on this record was determined by me or under my direction and control and that this U.S. Public Land Survey Monument Record is correct and complete to the best of my knowledge and belief.

Milo E. Stefan
 Signature

March 16, 1991
 Date



Index No. A-23

Stamp 3704360020