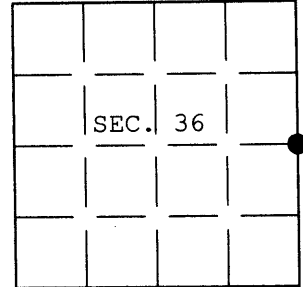


U.S. PUBLIC LAND SURVEY MONUMENT RECORD

Note: This form is intended and designed to fulfill all requirements of Wisconsin Administrative Code, Chapter A-E 7.08 U.S. Public Land Survey Monument Record (3) (a) (b) (c) (d) (e) (f) (g) (h) (i). An additional sheet may be added if necessary to conform with said requirements.

(a) CORNER LOCATION: Plane Coordinates
 1/4 Cor. of Secs. 31 & 36 X:
 Township 37 North Y:
 Range 4 & 5 East of the 4th P.M. Datum:
 Town of Lynne County of Oneida

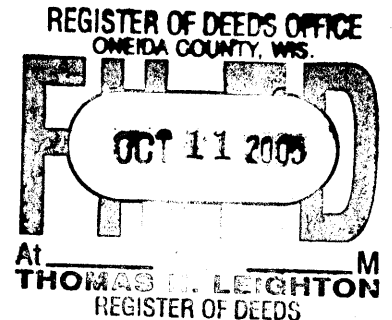


(b) HISTORY OF ORIGINAL CORNER ESTABLISHMENT

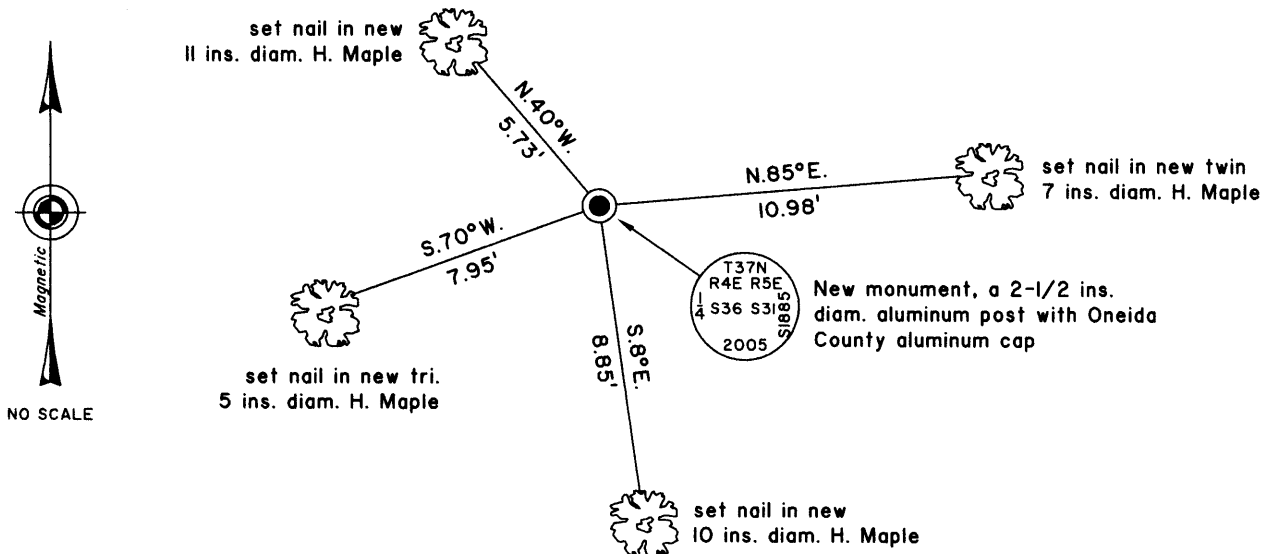
Original Surveyor: Alfred Millard Original Accessories:
 Date of Survey: Commenced Aug. 1860 Y. Birch 18" N.30°E., 35 lks.
 Completed Sept. 1860 Hemlock 10" S.60°E., 22 lks.

(b)(f)(g)(h) Description of monument found at this corner and if it was accepted, state all evidence (material, testimonial, occupational, plats, records, other monuments) used as a basis for accepting. If not accepted or if nothing was found, state evidence used as basis for establishing location. If re-established through lost corner proportionate methods, indicate all monuments, distances and directions used to establish. Indicate type of monument and sign post found or set.

2 June 2005: I found and accepted a badly rusted 48 ins. long, 2-1/2 ins. diam. iron post with Lytle brass cap. It appears this monument was set by single proportionate measure as my recent GPS survey finds it very close to the midpoint of a line connecting the section corners. I accept the monument as a good faith effort to re-establish the original corner location. I replaced the rusted monument with an aluminum post, 30 ins. long, 2-1/2 ins. diam. with Oneida County aluminum cap projecting 6 ins. above the ground surface. I placed a blue/black "DEEP-1" magnet beneath the new monument. I established accessories as shown below and set a white plastic sign post bearing Northeast, 1-1/2 ft. dist.



(c)(d)(e) Plan view of corner with ties to at least 4 witness monuments. If in disagreement with previously established corner, show the distances between the two corners and also indicate the ties to the disputed.



(i) I, Jeffrey W. Austin, Registered Land Surveyor No. S-1885, hereby certify upon honor that the corner location on this record was determined by me or under my direction and control and that this U.S. Public Land Survey Monument Record is correct and complete to the best of my knowledge and belief.

Signature Date 7 JUNE 2005



3704302000