

# U.S. PUBLIC LAND SURVEY MONUMENT RECORD

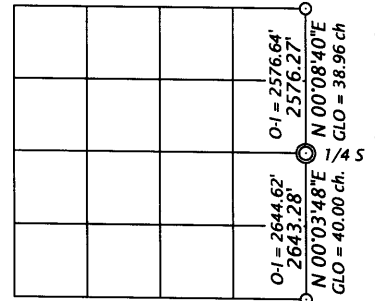
Note: This form is intended and designed to fulfill all requirements of the Wisconsin Administrative Code, Chapter A-E 7.08 U.S. Public Land Monument Record (3)(a)(b)(c)(d)(e)(f)(g)(h)(i). An additional sheet may be added if necessary to conform with said requirements.

**(a) CORNER LOCATION:**

East 1/4 corner of Section 2  
 Township 37 North  
 Range 5 East  
 Town of Little Rice  
 County of Oneida

**O.C. COORDINATES**

North: 196623.8790  
 East: 160480.91940  
 Control Station: O.C. 292  
 Latitude: 45°42'46.77084" N  
 Longitude: 89°50'42.63660" W  
 Datum: NAD - 83 (91)  
 Method: Direct RTK GPS



Bearings are Oneida County Grid

**(b) HISTORY OF ORIGINAL CORNER ESTABLISHMENT**

Original Surveyor: Joseph H. Jenkins, Deputy Surveyor  
 Date of Survey: Commenced June 12th, 1863  
 Completed June 24th, 1863

Original B.T.'S: Aspen 8" S20°E, 22 links (14.52 feet)  
 Aspen 6" N19°W, 12 links (7.92 feet)

SECTION 2

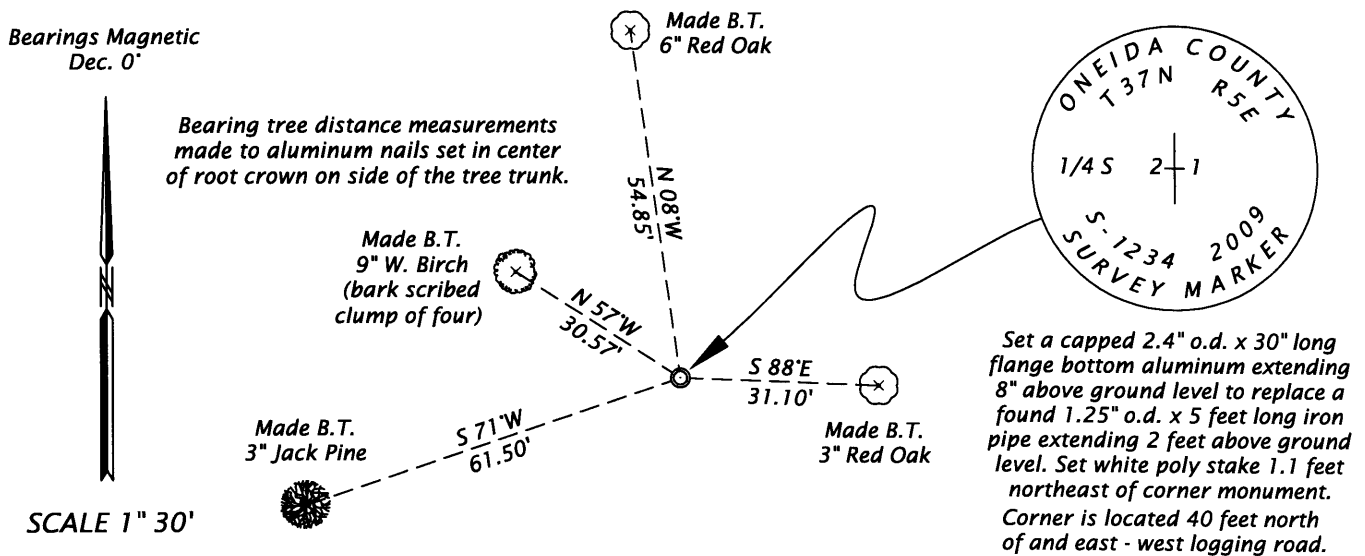
Oneida County  
GPS position

**(f)(g)(h) DESCRIPTION OF MONUMENT FOUND AT THIS CORNER AND IF IT WAS ACCEPTED, STATE ALL EVIDENCE (MATERIAL, TESTIMONIAL, OCCUPATIONAL, PLATS, RECORDS, OTHER MONUMENTS) USED AS A BASIS FOR ESTABLISHING LOCATION. IF NOT ACCEPTED OF IF NOTHING WAS FOUND, STATE EVIDENCE USED AS BASIS FOR ESTABLISHING LOCATION. IF REESTABLISHED THROUGH LOST CORNER PROPORTIONATE METHODS, INDICATE ALL MONUMENTS, DISTANCES AND DIRECTIONS USED TO ESTABLISH. INDICATE TYPE OF MONUMENT AND SIGN POST FOUND OR SET.**

September 24, 1986 - Owens-Illinois map filed in NEPCO Bk. 1, Image #120, drawn by W. H. Stuth, representing a 1962 survey in Section 1, T37N, R5E, legends this corner "IRON PIPE OR CAP" with their measurements to sections corners shown above in diagram. The corner is shown referenced by bearing trees: 9" J. P. S44°W, 2.0 feet and a 6" J. P. N22°E, 8.0 feet.

March 28, 2009 - James D. Rein, RLS No. 1234 - recover a 1.25" o.d. x 5 feet long iron pipe extending 2 feet above ground level, referenced by a scribed 12" dia. Jack Pine stump S45°W, 2.45 feet. I believe this monument was set by single proportionate methods based upon the original GLO record. Because I find this monument to be very near to the theoretical position, I accept the pipe as monumenting the corner and replace it with a capped 2.4" o.d. x 30" long flange bottom aluminum monument extending 8" above ground level. We set a white poly stake 1.1 feet northeast of the corner monument and make new scribed bearing trees as shown below in the plan view.

**(c)(d)(e) PLAN VIEW OF CORNER WITH TIES TO AT LEAST 4 WITNESS MONUMENTS. IF IN DISAGREEMENT WITH PREVIOUSLY ESTABLISHED CORNER, SHOW THE DISTANCE BETWEEN THE TWO CORNERS AND ALSO INDICATE THE TIES TO THE DISPUTED CORNER.**



(i) I, JAMES D. REIN, REGISTERED LAND SURVEYOR NO. S-1234 HEREBY CERTIFY THAT THE CORNER LOCATION ON THIS RECORD WAS DETERMINED BY ME OR UNDER MY DIRECTION AND CONTROL AND THAT THIS U.S. PUBLIC LAND SURVEY MONUMENT RECORD IS CORRECT AND COMPLETE TO THE BEST OF MY KNOWLEDGE AND BELIEF.

*[Handwritten Signature]*  
 SIGNATURE

4/02/09  
 DATE 3705022009



INDEX NO. C-21