

U.S. PUBLIC LAND SURVEY MONUMENT LOCATION RECORD

Recorders Data

CORNER: NW Section Corner SECTION: 11 TOWNSHIP 37 NORTH RANGE 5 EAST/WEST

FOR M.C. CORNER INDICATE: NAME OF WATERWAY N/A SECTION LINE N/A

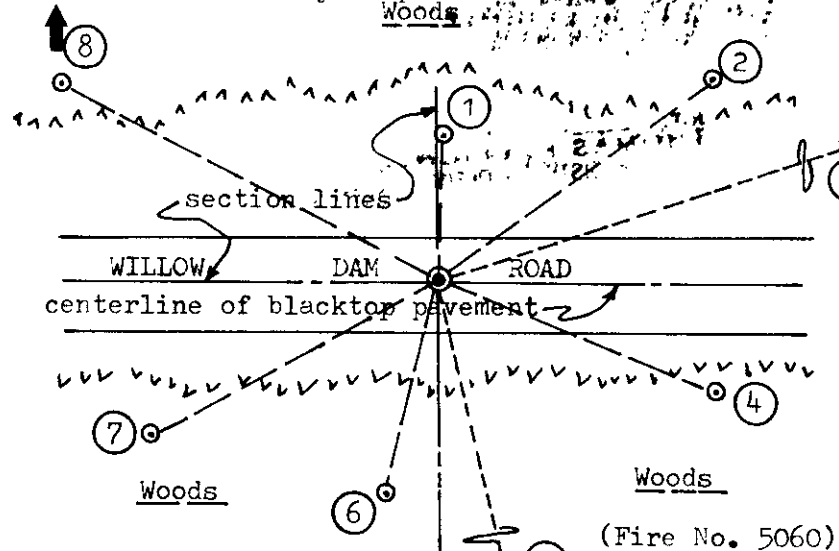
(CITY)(VILLAGE)(TOWN) OF: Little Rice COUNTY OF: Oneida

Description of monument found or placed and all other evidence used as a basis for monument location; including all monuments and related measurements required if the corner location is reestablished by lost corner proportionate methods. Also indicate name of original surveyor, survey date, corner monument set and established bearing trees, witness or reference monuments with ties from available records.

No corner monument evidence observed nor detected within blacktop roadway at this corner location, so I reset the corner with a 3/4" dia. by 12" long steel shaft driven flush in center of pavement by record distances from record BTs noted by Maine in 1937 per Oneida County survey records. In 1863, Jenkins/GLO set a wood post as the corner and marked BTs, an 8" Bw OBT N25°W 33 lks and a 10" Aspen N29°E 35 lks, which are all now obiterated. In 1937, Maine set a pine post at corner in center of existing roadway and noted new BTs, a 14" Pw S12°E 1.75 chains, now as described in new ties below, and a 16" Pw N72°E 2.556 ch, now as described in new ties below, also with a plain lower face blaze fissure at root crown; I nailed a standard Oneida County Do Not Disturb BT sign plate to South face at eye level. In 1967, a NEPCO survey notes a monument at corner by others and a witness corner 29' North, per map by Stuth in 1987, filed in Oneida County records; I did not find any witness corner monument at 29' North of corner location reset from 1937 record BT ties, but did find an older iron pipe as noted below 30' North. In 1974, Margitan noted that he set this corner as well from Maines 1937 record BTs with an iron pipe per his Plat of Survey, filed as B-797 in Oneida County survey records; however, his iron pipe was not detected in the existing blacktop roadway, as it was undoubtedly graded out during new roadway work in 1996 or so, according to local resident James V. Ouimette, who witnessed and generally agreed with corner location as he had remembered it to be. I reset the corner in the center of a triangle scribed from record BTs and nearest Margitan monument to East as a "best fit" position to a tolerance of 0.20', which also falls on centerline of new blacktop roadway.

Plan view map of monument location with bearing and distance ties to a minimum of four(4) described witness or reference monuments of concrete, natural stone, iron, live bearing trees or equivalent material. If applicable, also show a minimum of two(2) bearing and distance ties to any other monument found and not accepted; including the bearing and distance from the accepted monument. Indicate the basis for bearings of reference ties if not referenced to magnetic north.

NORTH This recovery completed May 14, 1998



WITNESS MONUMENT TIES:

- ① 1 1/4" dia. iron pipe found with no cap top 10" above grade N03°E at 30.00'.
- ② New BT 8" Pw N54°E 71.00'.
- ③ Record BT 32" Pw N72°E 168.00' to PK/washer in SW face at DBH.
- ④ New BT 6" Balsam S67°E 62.06'.
- ⑤ Record BT 16" Pw tall dead stub S12°E 115.5' to open blaze face.
- ⑥ New BT 7" Mr S14°W 46.16'.
- ⑦ New BT 16" Pr S62°W 68.67'.
- ⑧ New BT 14" Pw N62°W 88.54'.

Note: Standard white poly 'T' marker post set 6" North of Witness No. 1.

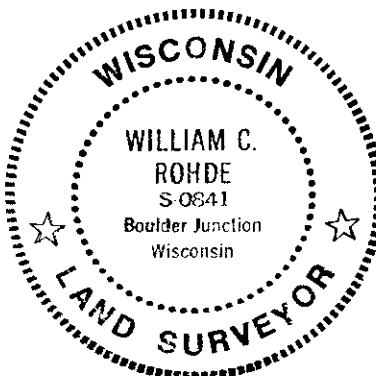
Unless otherwise indicated, all bearing tree ties are to a .25" dia. by 2.5" long PK nail with a 1.25" dia. steel washer driven into unblazed right face and a .25" dia. by 2.5" long PK nail with a 2" dia. steel washer stamped 'BT' is also driven into unblazed face of bearing tree at DBH; the basis for measured bearings is magnetic to nearest degree and all tie distances are horizontal measure to nearest 1/100th feet.

LAND SURVEYOR CERTIFICATION:

I, William C. Rohde, hereby certify that I am a duly licensed Professional Land Surveyor in Wisconsin, that this USPLS monument location was determined by me or under my direction and control, and that this U.S. Public Land Survey Monument Location Record is true and correct to the best of my knowledge and belief.

William C. Rohde Date: 5-17-98
Signature

	1	1	



RLS SEAL

SHEET NO. 1 OF 1

This form is intended to fulfill requirements of Chapter A-E 7.08 (3)(a)(b)(c)(d)(e)(f)(g)(h)(i) U.S. Public Land Survey Monument Location Record, Wisconsin Administrative Code. Use reverse side for geodetic location data and/or continuation purposes.

SECTION LOCATION MAP

INDEX NO. E 17
3705030000

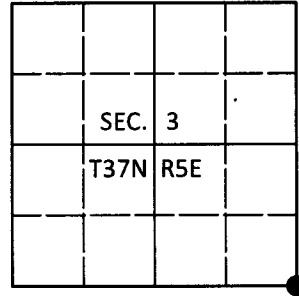
INDEX NO.

U.S. PUBLIC LAND SURVEY MONUMENT RECORD

Note: This form is intended and designed to fulfill all requirements of Wisconsin Administrative Code, Chapter A-E 7.08 U.S. Public Land Survey Monument Record (3)(a-i).

(a) CORNER LOCATION
 Cor. of Secs. 2, 3, 10 & 11
 Township 37 North
 Range 5 East of the 4th P.M.
 Town of Little Rice
 County of Oneida

WISCORS - Oneida County
 N: 193,995.85 USft
 E: 155,209.33 USft
 Datum: NAD 83(2011)
 GNSS Method: RTN - Direct
 GNSS Control: WISCORS VRS



(b) HISTORY OF ORIGINAL CORNER ESTABLISHMENT

Original Surveyor: _____ Original Accessories: _____
 Date of Survey Commenced: _____ See previous USPLS Monument Record
 Completed: _____

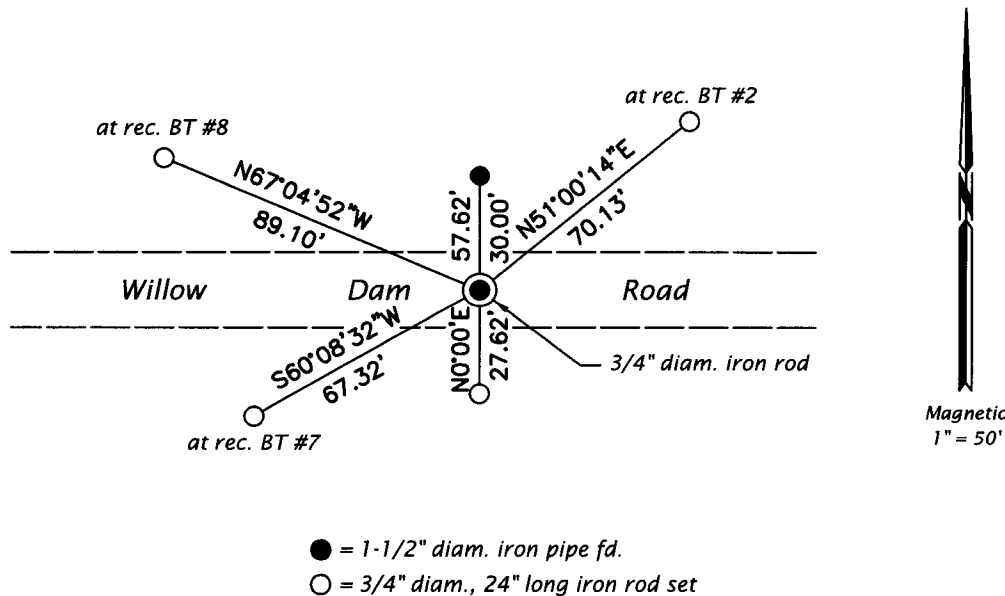
(b)(f)(g)(h) Description of monument found at this corner and if it was accepted, state all evidence (material, testimonial, occupational, plats, records, other monuments) used as a basis for accepting. If not accepted or if nothing was found, state evidence used as basis for establishing location. If re-established through lost corner proportionate methods, indicate all monuments, distances and directions used to establish. Indicate type of monument and sign post found or set.

This is a perpetuation of a previous USPLS Monument Record by William C. Rohde, RLS dated May 17, 1998 and filed in the office of the Oneida County Register of Deeds. A complete history of the corner can be found on the previous monument record. I accept the previous location as a true and faithful perpetuation or reestablishment of the original corner location and further perpetuate it as follows.

June 5, 2018: I found and accepted the record monument, a 3/4" diam. iron rod in the town road centerline. The record bearing trees at 62.06' and 46.16' are gone. I found or established accessories as shown below. I set a white vinyl sign post adjacent to the southerly reference monument.

The coordinate value shown has been verified by at least one of the following methods: 1) comparison to a previously GPS determined published value; 2) the value is the average of two or more GPS observations at a markedly different time; 3) one or more distances were measured back to the GPS observed corner from temporary GPS observed offset locations.

(c)(d)(e) Plan view of corner with ties to at least 4 witness monuments. If in disagreement with previously established corner, show the distances between the two corners and also indicate the ties to the disputed.



Magnetic
 1" = 50'

REGISTER OF DEEDS OFFICE
 ONEIDA COUNTY
 FILED

JUL 12 2018

KYLE J. FRANSON
 REGISTER OF DEEDS

(i) I, Jeffrey W. Austin, Professional Land Surveyor No. S-1885, hereby certify that the corner location on this record was determined by me or under my direction and control and that this U.S. Public Land Survey Monument Record is correct and complete to the best of my knowledge and belief.

 Signature
 JUNE 30, 2018
 Date