

U.S. PUBLIC LAND SURVEY MONUMENT RECORD
THOMAS H. LEIGHTON
REGISTER OF DEEDS

Note: This form is intended and designed to fulfill all requirements of the Wisconsin Administrative Code, Chapter A-E 7.08 U.S. Public Land Monument Record (3)(a)(b)(c)(d)(e)(f)(g)(h)(i). An additional sheet may be added if necessary to conform with said requirements.

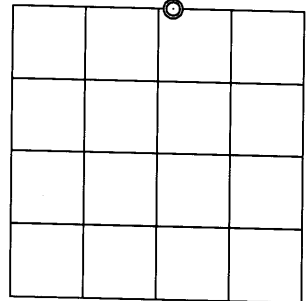
(a) CORNER LOCATION:

N 1/4 Wit. Corner of Section 10
Township 37 North
Range 5 East
Town Little Rice
County of Oneida

O. C. COORDINATES

North: 194179.2999
East: 152353.4245
Control Station: O.C. 292
Latitude: 45°42'46.77084" N
Longitude: 89°50'42.63660" W
Datum: NAD 83 (91)
Method: Offset traverse-RTK GPS control

1/4 Wit. Cor.



(b) HISTORY OF ORIGINAL CORNER ESTABLISHMENT

Original Surveyor: Joseph H. Jenkins, Deputy Surveyor
Date of Survey: Commenced June 12th, 1863
Completed June 24th, 1863

Original B.T.'S: Y. Pine 15" S56°E, 10 links (6.60 feet)
Y. Pine 12" N42°W, 21 links (13.86 feet)

SECTION 10

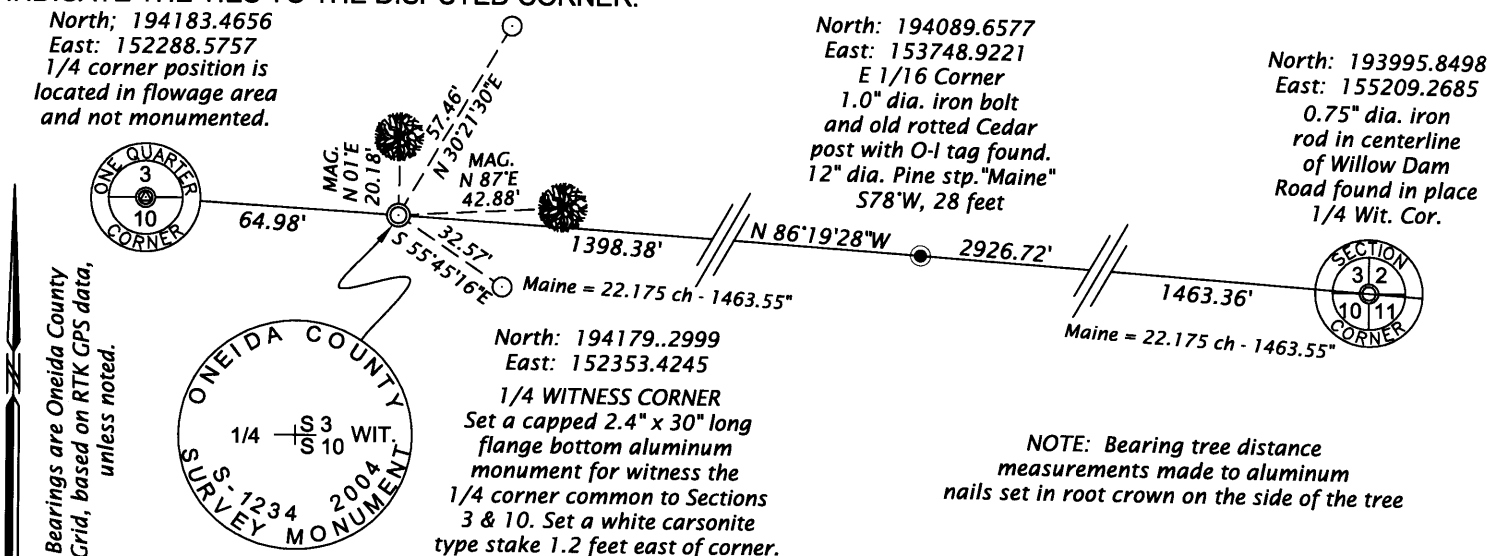
(f)(g)(h) DESCRIPTION OF MONUMENT FOUND AT THIS CORNER AND IF IT WAS ACCEPTED, STATE ALL EVIDENCE (MATERIAL, TESTIMONIAL, OCCUPATIONAL, PLATS, RECORDS, OTHER MONUMENTS) USED AS A BASIS FOR ESTABLISHING LOCATION. IF NOT ACCEPTED OF IF NOTHING WAS FOUND, STATE EVIDENCE USED AS BASIS FOR ESTABLISHING LOCATION. IF REESTABLISHED THROUGH LOST CORNER PROPORTIONATE METHODS, INDICATE ALL MONUMENTS, DISTANCES AND DIRECTIONS USED TO ESTABLISH. INDICATE TYPE OF MONUMENT AND SIGN POST FOUND OR SET.

October 29, 1937 - August 18, 1938 - V. M. Maine, Oneida County Surveyor - Field Books (1937, pages 238 through 247) and (1938, pages 183 through 194) and map filed as C 948 - Found 2 old stakes buried in ground - Orig. B.T.'s grubbed & burned up - Set Cedar stake and new B.T.'s: W. Pine 6" N73°E, 24 links (15.84 feet) and a W. Pine 5" N 5°W, .115 chains (7.59 feet). Maine also sets a Cedar stake for the E 1/8 Corner on the north line of Section 10, referenced by a J. Pine B.T. 12" S70°W, .429 chains (28.31 feet).

1967 - Owens-Illinois, Ownership Boundary Survey map shows the E 1/16 Corner being monumented and referenced by a 13" J. Pine S72°W, 28.0'.

December 11, 2004 - James D. Rein, RLS No. 1234 - Search for evidence of the corner by projecting through Maine's recovered E 1/16 Corner from the northeast corner of Section 10. Years of erosion by the waters of the Willow Reservoir have removed all evidence of Maine's perpetuation of the original corner. I conclude that this corner is obliterated and restore its position by doubling through the recovered E 1/16 Corner and northeast section corner as shown below in the plan. Because the corner position is subject to inundation, I set a capped 2.4" x 30" long flange bottom aluminum monument on upland for a witness to the corner. We also set a white carsonite type stake 1.2 feet East of the witness corner and make bearing tree and iron pipe reference ties as shown in the plan.

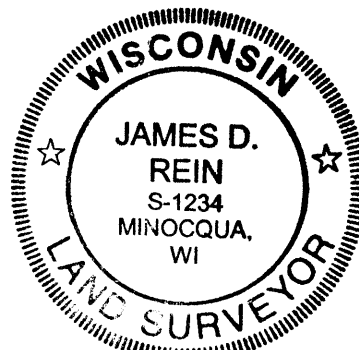
(c)(d)(e) PLAN VIEW OF CORNER WITH TIES TO AT LEAST 4 WITNESS MONUMENTS. IF IN DISAGREEMENT WITH PREVIOUSLY ESTABLISHED CORNER, SHOW THE DISTANCE BETWEEN THE TWO CORNERS AND ALSO INDICATE THE TIES TO THE DISPUTED CORNER.



(i) I, JAMES D. REIN, REGISTERED LAND SURVEYOR NO. S-1234 HEREBY CERTIFY THAT THE CORNER LOCATION ON THIS RECORD WAS DETERMINED BY ME OR UNDER MY DIRECTION AND CONTROL AND THAT THIS U.S. PUBLIC LAND SURVEY MONUMENT RECORD IS CORRECT AND COMPLETE TO THE BEST OF MY KNOWLEDGE AND BELIEF.

[Handwritten Signature]

June 5th, 2005
DATE 3705030020



INDEX NO. E-15