

U.S. PUBLIC LAND SURVEY MONUMENT LOCATION RECORD

Recorders Data

CORNER: West 1/4 SECTION: 2 TOWNSHIP 37 NORTH RANGE 5 EAST/WEST

FOR M.C. CORNER INDICATE: NAME OF WATERWAY N/A SECTION LINE N/A

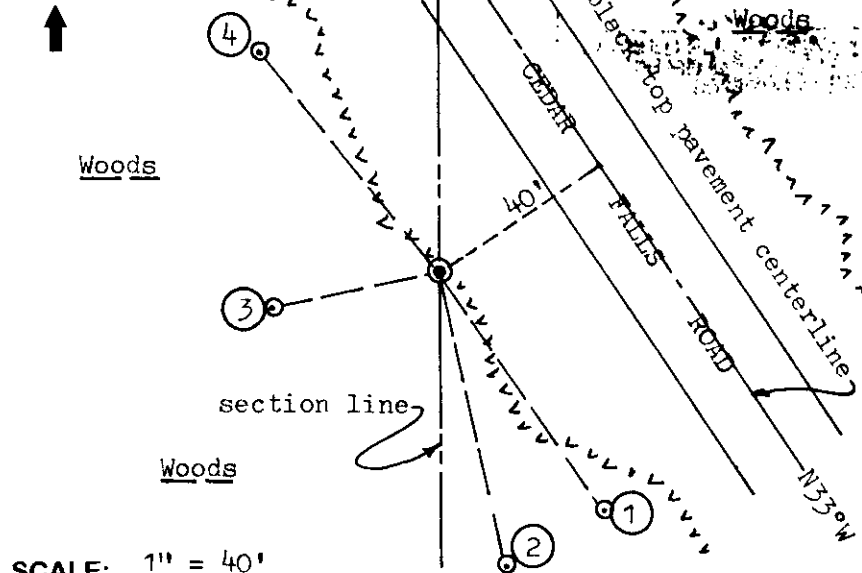
(CITY)(VILLAGE)(TOWN) OF: Little Rice COUNTY OF: Oneida

Description of monument found or placed and all other evidence used as a basis for monument location; including all monuments and related measurements required if the corner location is reestablished by lost corner proportionate methods. Also indicate name of original surveyor, survey date, corner monument set and established bearing trees, witness or reference monuments with ties from available records.

Found and accepted an uncapped 2" dia. iron pipe monument at this corner location with top 20" above grade and painted blue. Also found the upper 28" of a rotted off 5" square wood corner marker post along West side of iron pipe monument, which was plainly scribed "1/4" on South face, "S3" on West face and "S2" on East face to further identify the corner. I carefully removed the older 53" long iron pipe monument found and reset a standard 2" dia. by 48" long iron pipe monument with stamped brass cap 11" above grade at corner location. In 1863, Jenkins/GLO set a wood post at the corner and marked BTs, a 6" Aspen N56°W 14 lks and a 5" Aspen S42°E 13 lks, which are all now obliterated. This monument and wood marker post found is similar to others set by NEPCO/Owens-Illinois woodlands boundary surveys in the area, and therefore accepted by common report, as no other reliable information was found from available records. A carefull inspection of the nearby area revealed no other corner evidence of a supportive or conflictive nature. I left the older iron pipe monument and wood corner marker post flat on grade at the reset iron pipe corner monument. This recovery was completed May 6, 1998; there were no witnesses other than vehicular traffic.

Plan view map of monument location with bearing and distance ties to a minimum of four(4) described witness or reference monuments of concrete, natural stone, iron, live bearing trees or equivalent material. If applicable, also show a minimum of two(2) bearing and distance ties to any other monument found and not accepted; including the bearing and distance from the accepted monument. Indicate the basis for bearings of reference ties if not referenced to magnetic north.

NORTH



WITNESS MONUMENT TIES:

- ① New BT 14" Pw S33°E 60.12'.
- ② New BT 10" Mr S12°E 62.85'.
- ③ New BT 12" Mr S79°W 35.55'; PK nail/washer set in left face.
- ④ New BT 12" Pw N39°W 59.48'.

Note: Standard white poly 'T' marker post set 7" East of monument.

SCALE: 1" = 40'

Unless otherwise indicated, all bearing tree ties are to a .25" dia. by 2.5" long PK nail with a 1.25" dia. steel washer driven into unblazed right face and a .25" dia. by 2.5" long PK nail with a 2" dia. steel washer stamped 'BT' is also driven into unblazed face of bearing tree at DBH; the basis for measured bearings is magnetic to nearest degree and all tie distances are horizontal measure to nearest 1/100th feet.

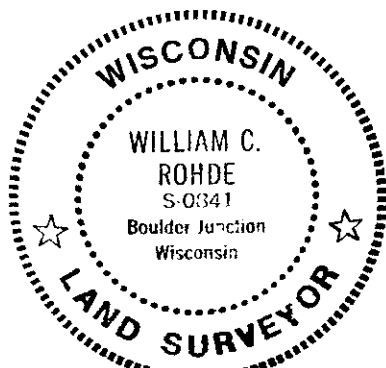
LAND SURVEYOR CERTIFICATION:

I, William C. Rohde, hereby certify that I am a duly licensed Professional Land Surveyor in Wisconsin, that this USPLS monument location was determined by me or under my direction and control, and that this U.S. Public Land Survey Monument Location Record is true and correct to the best of my knowledge and belief.

William C. Rohde Date: 5-16-98
Signature

	2		

INDEX NO.



RLS SEAL

SHEET NO. 1 OF 1

This form is intended to fulfill requirements of Chapter A-E 7.08 (3)(a)(b)(c)(d)(e)(f)(g)(h)(i) U.S. Public Land Survey Monument Location Record, Wisconsin Administrative Code. Use reverse side for geodetic location data and/or continuation purposes.

SECTION LOCATION MAP

INDEX NO. C 17

3705032000

U.S. PUBLIC LAND SURVEY MONUMENT RECORD

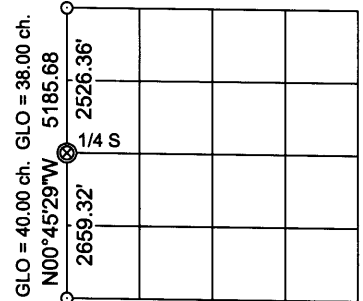
Note: This form is intended and designed to fulfill all requirements of the Wisconsin Administrative Code, Chapter A-E 7.08 U.S. Public Land Monument Record (3)(a)(b)(c)(d)(e)(f)(g)(h)(i). An additional sheet may be added if necessary to conform with said requirements.

(a) CORNER LOCATION:

West 1/4 corner of Section 2
 Township 37 North
 Range 5 East
 Town of Little Rice
 County of Oneida

O. C. COORDINATES

North: 196654.9767
 East: 155174.0913
 Control Station: O.C. 292
 Latitude: 45°42'46.77084" N
 Longitude: 89°50'42.63660" W
 Datum: NAD - 83 (91)
 Method: Direct RTK GPS



(b) HISTORY OF ORIGINAL CORNER ESTABLISHMENT

Original Surveyor: Joseph H. Jenkins, Deputy Surveyor
 Date of Survey: Commenced June 12th, 1863
 Completed June 24th, 1863

Original B.T.'s: Aspen 6" N56°W, 14 links (9.24 feet)
 Aspen 5" S42°E, 13 links (8.58 feet)

SECTION 2

(f)(g)(h) DESCRIPTION OF MONUMENT FOUND AT THIS CORNER AND IF IT WAS ACCEPTED, STATE ALL EVIDENCE (MATERIAL, TESTIMONIAL, OCCUPATIONAL, PLATS, RECORDS, OTHER MONUMENTS) USED AS A BASIS FOR ESTABLISHING LOCATION. IF NOT ACCEPTED OF IF NOTHING WAS FOUND, STATE EVIDENCE USED AS BASIS FOR ESTABLISHING LOCATION. IF REESTABLISHED THROUGH LOST CORNER PROPORTIONATE METHODS, INDICATE ALL MONUMENTS, DISTANCES AND DIRECTIONS USED TO ESTABLISH. INDICATE TYPE OF MONUMENT AND SIGN POST FOUND OR SET.

1930's - Wisconsin Valley Improvement Company - Section 3, T37N, R5E, flowage map filed as B2582 in the Oneida County Land Records Office shows the total west line of Section 2 having a bearing N4°32'W, with no distance given to the quarter corner.

May 16, 1998 - William C. Rhode, RLS No. 0841 - U.S. Public Land Survey Monument Record, replaced a found 2" dia. x 53" long iron pipe with a stamped brass capped 2" dia. iron pipe. He found evidence of an old scribed wood post similar to others set by NEPCO/Owens-Illinois woodlands boundary surveys. He made bearing tree reference ties as shown on his monument record.

March 31, 2009 - James D. Rein, RLS No. 1234 - After performing computations to the recovered northwest and southwest corners of Section 2 (both based upon a perpetuation of original evidence), I conclude the apparent paper company monument was set in error at a mid point between sections and not by true proportionate measurement based upon the original government closing record of 40 chains and 38 chains respectively. The existing monument bears 3.32 feet east and 0.58 feet north of a theoretical split. There is no history of this corner, the record of which, has apparently been purged from the paper companies files. Based upon the foregoing, I determine the original corner position is lost and monument the corner by single proportionate measurement, shown above in the section diagram, with a Berntsen survey marker nail set in the pavement of Cedar Falls Road, 6.0 feet southwest of the centerline. I set additional reference monuments and ties to the existing bearing trees as shown below in the plan.

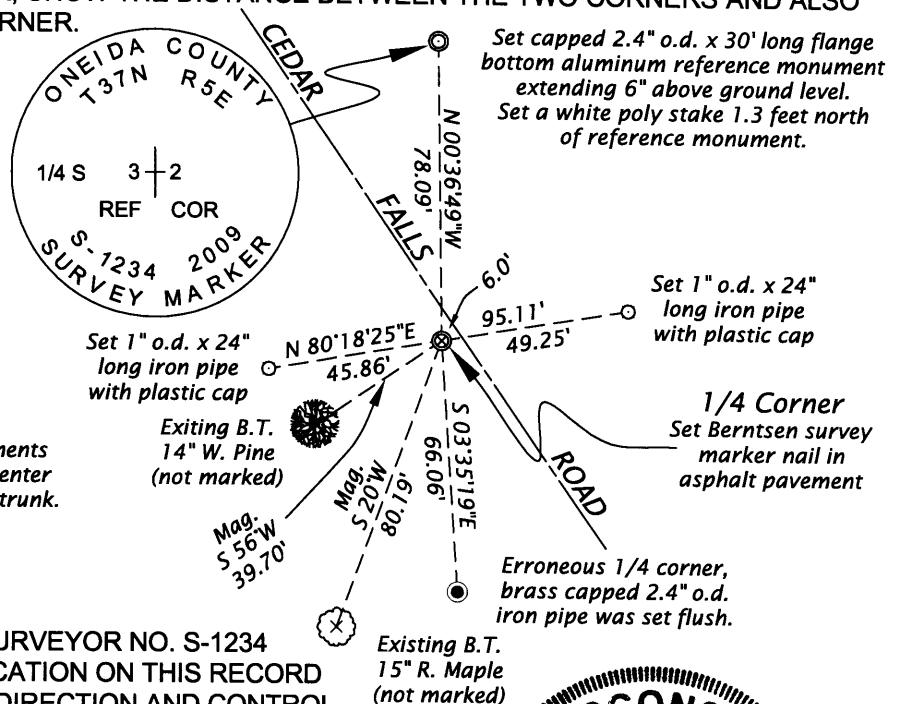
(c)(d)(e) PLAN VIEW OF CORNER WITH TIES TO AT LEAST 4 WITNESS MONUMENTS. IF IN DISAGREEMENT WITH PREVIOUSLY ESTABLISHED CORNER, SHOW THE DISTANCE BETWEEN THE TWO CORNERS AND ALSO INDICATE THE TIES TO THE DISPUTED CORNER.

Bearings, unless noted, are Oneida County Grid, based upon RTK - GPS data



SCALE 1" = 50'

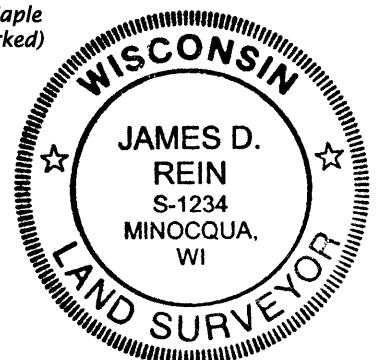
Bearing tree distance measurements made to aluminum nails set in center of root crown on side of the tree trunk.



(i) I, JAMES D. REIN, REGISTERED LAND SURVEYOR NO. S-1234 HEREBY CERTIFY THAT THE CORNER LOCATION ON THIS RECORD WAS DETERMINED BY ME OR UNDER MY DIRECTION AND CONTROL AND THAT THIS U.S. PUBLIC LAND SURVEY MONUMENT RECORD IS CORRECT AND COMPLETE TO THE BEST OF MY KNOWLEDGE AND BELIEF.

James D. Rein
 SIGNATURE

4/02/09
 DATE 3705032000



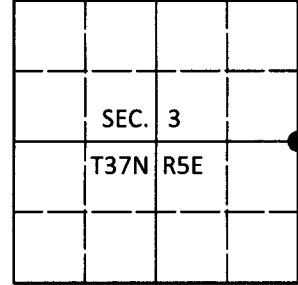
INDEX NO. C-12

U.S. PUBLIC LAND SURVEY MONUMENT RECORD

Note: This form is intended and designed to fulfill all requirements of Wisconsin Administrative Code, Chapter A-E 7.08 U.S. Public Land Survey Monument Record (3)(a-i).

(a) CORNER LOCATION
 1/4 Cor. of Secs. 2 & 3
 Township 37 North
 Range 5 East of the 4th P.M.
 Town of Little Rice
 County of Oneida

WISCORS - Oneida County
 N: 196,654.86 USft
 E: 155,174.11 USft
 Datum: NAD 83(2011)
 GNSS Method: RTN - Direct
 GNSS Control: WISCORS VRS



(b) HISTORY OF ORIGINAL CORNER ESTABLISHMENT

Original Surveyor: _____ Original Accessories: _____
 Date of Survey Commenced: _____ See previous USPLS Monument Record
 Completed: _____

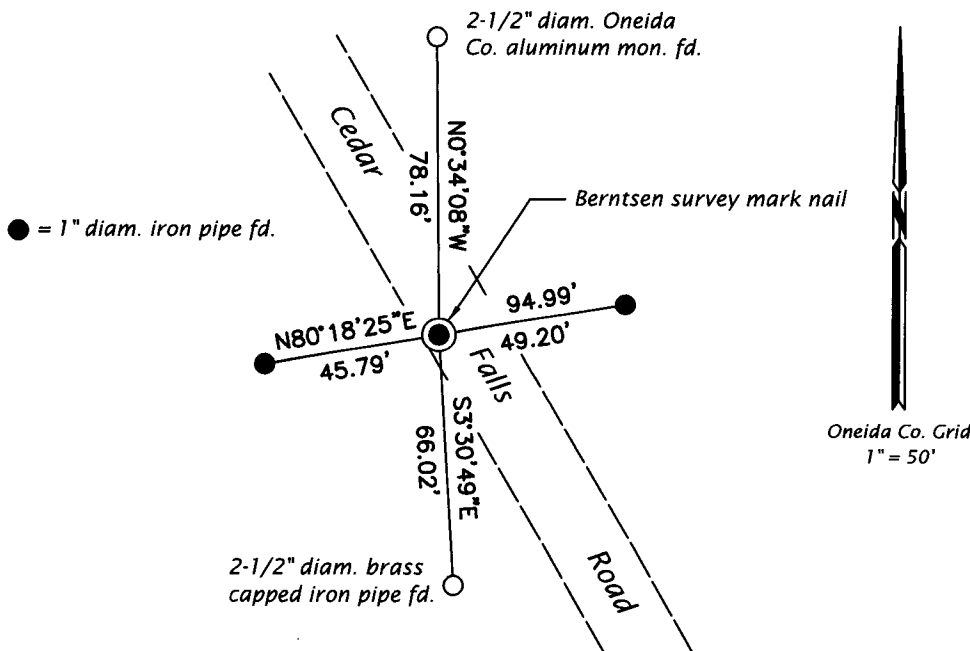
(b)(f)(g)(h) Description of monument found at this corner and if it was accepted, state all evidence (material, testimonial, occupational, plats, records, other monuments) used as a basis for accepting. If not accepted or if nothing was found, state evidence used as basis for establishing location. If re-established through lost corner proportionate methods, indicate all monuments, distances and directions used to establish. Indicate type of monument and sign post found or set.

This is a perpetuation of a previous USPLS Monument Record by James D. Rein, RLS dated April 2, 2009 and filed in the office of the Oneida County Register of Deeds. A complete history of the corner can be found on the previous monument record. I accept the previous location as a true and faithful perpetuation or reestablishment of the original corner location and further perpetuate it as follows.

June 5, 2018: I found and accepted the record monument, a Berntsen "survey mark" nail in the southbound lane of Cedar Falls Road. The record maple bearing tree is gone, the pine is in good condition. I found or established accessories as shown below. I found a white vinyl sign post adjacent to the Oneida Co. monument.

The coordinate value shown has been verified by at least one of the following methods: 1) comparison to a previously GPS determined published value; 2) the value is the average of two or more GPS observations at a markedly different time; 3) one or more distances were measured back to the GPS observed corner from temporary GPS observed offset locations.

(c)(d)(e) Plan view of corner with ties to at least 4 witness monuments. If in disagreement with previously established corner, show the distances between the two corners and also indicate the ties to the disputed.



REGISTER OF DEEDS OFFICE
 ONEIDA COUNTY
 FILED

JUL 12 2018

KYLE J. FRANSON
 REGISTER OF DEEDS

(i) I, Jeffrey W. Austin, Professional Land Surveyor No. S-1885, hereby certify that the corner location on this record was determined by me or under my direction and control and that this U.S. Public Land Survey Monument Record is correct and complete to the best of my knowledge and belief.

[Handwritten Signature]

 Signature

JUNE 30, 2018

 Date