

U.S. PUBLIC LAND SURVEY MONUMENT RECORD  
At O'Clock M  
REGISTER OF DEEDS

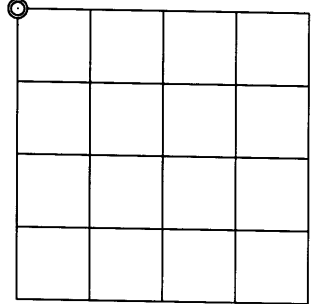
Note: This form is intended and designed to fulfill all requirements of the Wisconsin Administrative Code, Chapter A-E 7.08 U.S. Public Land Monument Record (3)(a)(b)(c)(d)(e)(f)(g)(h)(i). An additional sheet may be added if necessary to conform with said requirements.

(a) CORNER LOCATION:

COORDINATES

Northwest corner of Section 10  
Township 37 North  
Range 5 East  
Town of Little Rice  
County of Oneida

North: 193931.6378  
East: 149741.8588  
Control Station: O.C. 292  
Latitude: 45°42'46.77084" N  
Longitude: 89°50'42.63660" W  
Datum: NAD 83 (91)  
Method: RTK GPS



SECTION 10

(b) HISTORY OF ORIGINAL CORNER ESTABLISHMENT

Original Surveyor: Joseph H. Jenkins, Deputy Surveyor  
Date of Survey: Commenced June 12th, 1863  
Completed June 24th, 1863

Original B.T.'S: Blk. Pine 5" N22°W, 8 links (5.28 feet)  
Blk. Pine 5" N75°E, 19 links (12.54 feet)

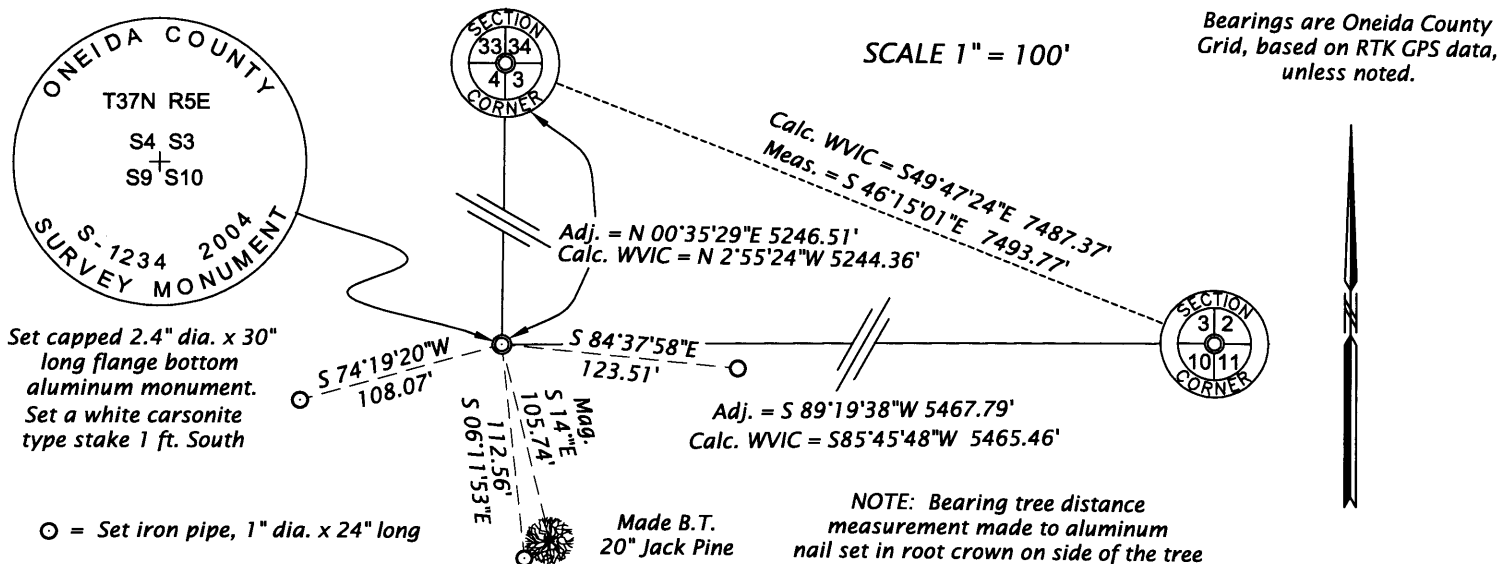
(f)(g)(h) DESCRIPTION OF MONUMENT FOUND AT THIS CORNER AND IF IT WAS ACCEPTED, STATE ALL EVIDENCE (MATERIAL, TESTIMONIAL, OCCUPATIONAL, PLATS, RECORDS, OTHER MONUMENTS) USED AS A BASIS FOR ESTABLISHING LOCATION. IF NOT ACCEPTED OF IF NOTHING WAS FOUND, STATE EVIDENCE USED AS BASIS FOR ESTABLISHING LOCATION. IF REESTABLISHED THROUGH LOST CORNER PROPORTIONATE METHODS, INDICATE ALL MONUMENTS, DISTANCES AND DIRECTIONS USED TO ESTABLISH. INDICATE TYPE OF MONUMENT AND SIGN POST FOUND OR SET.

1924 - Wisconsin Valley Improvement Company - Filed Book 86, Willow Reservoir survey, pages 2, 3, 5 & 11- perform a retracement survey of the south and west lines of Section 3, including the recovery of the corner common to Sections 3-4-9-10.

November 4th, 1937 - V. M. Maine, Oneida County Surveyor - Field Book 1937, page 246 - Recovered Orig. Govt. corner to Sections 3,4,9 & 10. identified by Orig. B.T., it is down and burned, boxing plain viz. Blk. Pine 5' N22°W, 8 links; Blk. Pine 5' N75°E, 19 links. Found where it stood. Set new Cedar stake, Marked B.T.'s, viz.: J. Pine 6" N64°E, .296 chains; J. Pine 4" N34°W, .12 chains; J. Pine 5" S26°E, .296 chains; J. Pine 5" S18°W, .18 chains.

December 11, 2004 - James D. Rein, RLS No. 1234 - After extensive searches, I conclude the corner monument has been obliterated and reestablish it by utilizing the WVIC survey ties from the southeast corner to the northwest corner of Section 3, rotate the calculated WVIC diagonal tie to match our bearing and then perform a compass rule adjustment to determine the corner position. I set a capped 2.4" dia. x 30" long flange bottom aluminum monument, top 3" below ground on a gentle ridge subject to inundation by the flowage. I set a white carsonite type stake 1 foot South of the corner and make reference ties as shown below in the plan view.

(c)(d)(e) PLAN VIEW OF CORNER WITH TIES TO AT LEAST 4 WITNESS MONUMENTS. IF IN DISAGREEMENT WITH PREVIOUSLY ESTABLISHED CORNER, SHOW THE DISTANCE BETWEEN THE TWO CORNERS AND ALSO INDICATE THE TIES TO THE DISPUTED CORNER.



(i) I, JAMES L. REIN, REGISTERED LAND SURVEYOR NO. S-2335 HEREBY CERTIFY THAT THE CORNER LOCATION ON THIS RECORD WAS DETERMINED BY ME OR UNDER MY DIRECTION AND CONTROL AND THAT THIS U.S. PUBLIC LAND SURVEY MONUMENT RECORD IS CORRECT AND COMPLETE TO THE BEST OF MY KNOWLEDGE AND BELIEF.

SIGNATURE

DATE June 5, 2005  
3705040000



INDEX NO. E/13