

# U.S. PUBLIC LAND SURVEY MONUMENT RECORD

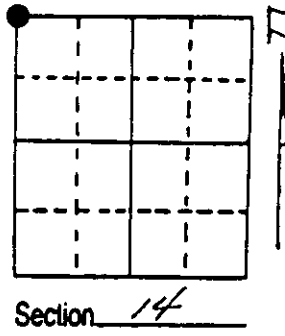
Note: This form is intended and designed to fulfill all requirements of Wisconsin Administrative Code, Chapter A-E 7.08 U.S. Public Land Survey Monument Record (3) (a) (b) (c) (d) (e) (f) (g) (h) (i). An additional sheet may be added if necessary to conform with said requirements.

(a) Corner location: Township 37 North

Range 5 EastWest

Town/City/Village Little Rice

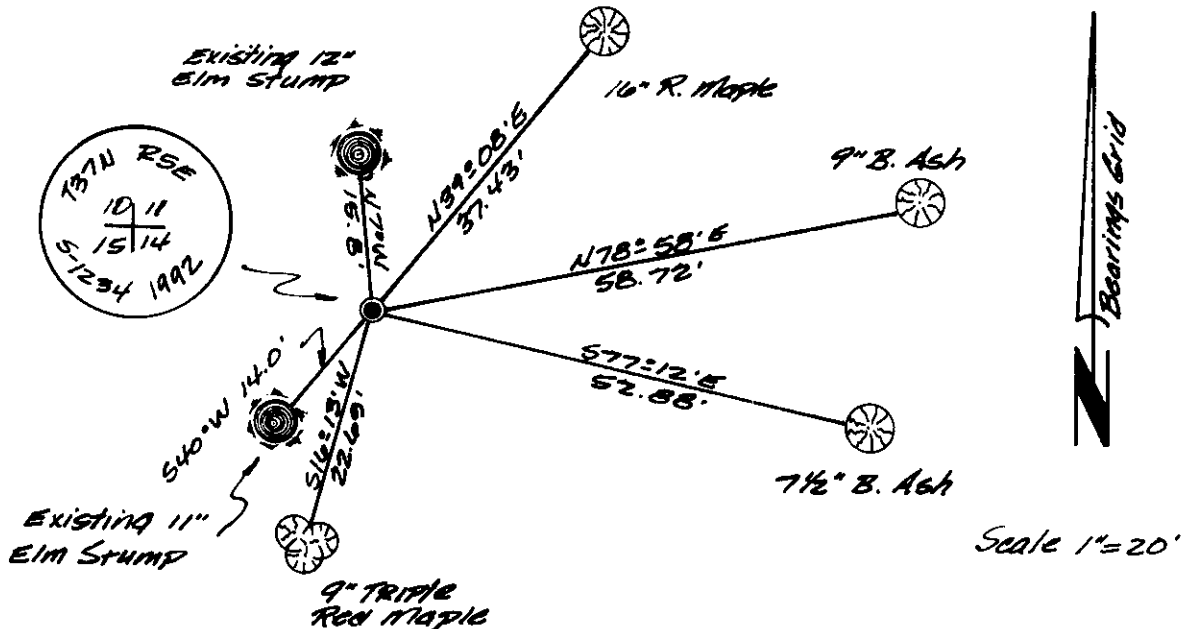
County Oneida



(b) (f) (g) (h) Description of monument found at this corner and if it was accepted, state all evidence (material, testimonial, occupational, plats, records, other monuments) used as a basis for accepting. If not accepted or if nothing was found, state evidence used as basis for establishing location. If reestablished through lost corner proportionate methods, indicate all monuments, distances and directions used to establish. Indicate type of monument found or set and sign post.

June 14th, 1863 - Joseph H. Jenkins, Deputy Surveyor, set section post witnessed by two bearing trees: an 8" Birch bearing N52°W, 14 links and a 6" Fir bearing N72°E, 24 links.  
 Nov. 1st, 1937 - Vernon H. Maine, County Surveyor, could no recover any evidence of the original Section corner. With testimony from C. B. Howe and Ira Smith 'that the original Gov't. corner was never found', Maine set the section corner in line with and proportionate with the original 1/4 corner and the original meander corner. Made two new reference ties to a 16" Elm bearing N7 1/2°W, 22 6/10 links, and a 6" Elm bearing S40°W, 21 2/10 links.  
 May 1961, Northwoods Surveyors map identifies an iron pipe for the section corner referenced by a 12" Elm bearing S64°W, 13.9' and a 18" Elm bearing S10°E, 14.7'  
 May 14th, 1992 - James D. Rein, RLS No. 1234, recovered a 3/4" dia. iron pipe and post witnessed by a 12" Elm stump bearing N7°W, 15.8', and an 11" Elm stump bearing S40°W, 14.0'. Replaced the 3/4" dia. iron pipe with a capped 2" dia. X 30" long aluminum monument. Made reference ties as shown in plan view. Oneida County plastic post is located 2 1/2 feet East of corner.

(c) (d) (e) Plan view of corner with ties to at least 4 witness monuments. If in disagreement with previously established corner, show the distances between the two corners and also indicate the ties to the disputed corner.



(i) I, James D. Rein, RLS No. 1234  
 (type or print name) certify that the corner location on this record was determined by me or under my direction and control and that this U.S. Public Land Survey Monument Record is correct and complete to the best of my knowledge and belief.

James D. Rein Signature June 18th, 1992 Date



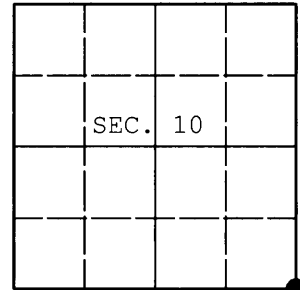
376510 0000  
Stamp

Index No. J-17

**U.S. PUBLIC LAND SURVEY MONUMENT RECORD**

Note: This form is intended and designed to fulfill all requirements of Wisconsin Administrative Code, Chapter A-E 7.08 U.S. Public Land Survey Monument Record (3) (a) (b) (c) (d) (e) (f) (g) (h) (i). An additional sheet may be added if necessary to conform with said requirements.

(a) CORNER LOCATION: WISCORS (Oneida County)  
Cor. of Secs. 10, 11, 14 & 15 N: 188,605.09 USft  
Township 37 North E: 155,391.35 USft  
Range 5 East of the 4th P.M. Datum: NAD 1983(2011)  
Town of Little Rice County of Oneida



(b) HISTORY OF ORIGINAL CORNER ESTABLISHMENT

Original Surveyor: Original Accessories:  
Date of Survey: Commenced:  
Completed:

(b) (f) (g) (h) Description of monument found at this corner and if it was accepted, state all evidence (material, testimonial, occupational, plats, records, other monuments) used as a basis for accepting. If not accepted or if nothing was found, state evidence used as basis for establishing location. If re-established through lost corner proportionate methods, indicate all monuments, distances and directions used to establish. Indicate type of monument and sign post found or set.

NOTE: This is a perpetuation of a previous USPLS Monument Record by James D. Rein, RLS dated June 18, 1992 and filed in the office of the Oneida County Register of Deeds. A complete history of the corner can be found on the previous monument record. I accept the previous location as a true and faithful perpetuation or reestablishment of the original corner location and further perpetuate it as follows.

July 20, 2014: I found and accepted Rein's monument, a 2-1/2" diam. aluminum pipe with 3-1/4" diam. Oneida Co. aluminum cap. Rein's accessories were found in substantial agreement with his previous record and were not remeasured as the sole purpose of this work is to report the coordinates of the corner point.

The coordinates shown were derived from a direct static GPS observation referenced to the WISCORS network.

(c) (d) (e) Plan view of corner with ties to at least 4 witness monuments. If in disagreement with previously established corner, show the distances between the two corners and also indicate the ties to the disputed.

REGISTER OF DEEDS OFFICE  
ONEIDA COUNTY  
FILED

OCT 13 2014

AT \_\_\_\_\_ O'CLOCK \_\_\_\_\_ M  
KYLE J. FRANSON  
REGISTER OF DEEDS

(i) I, Jeffrey W. Austin, Registered Land Surveyor No. S-1885, hereby certify that the corner location on this record was determined by me or under my direction and control and that this U.S. Public Land Survey Monument Record is correct and complete to the best of my knowledge and belief.



Signature

Date

SEP. 7, 2014