

U.S. PUBLIC LAND SURVEY MONUMENT RECORD

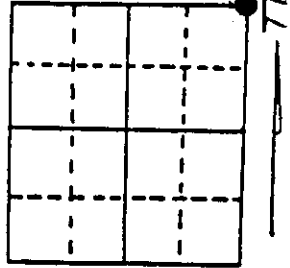
Note: This form is intended and designed to fulfill all requirements of Wisconsin Administrative Code, Chapter A-E 7.08 U.S. Public Land Survey Monument Record (3) (a) (b) (c) (d) (e) (f) (g) (h) (i). An additional sheet may be added if necessary to conform with said requirements.

(a) Corner location: Township 37 North

Range 5 East

Township Little Rice

County Oneida



Section 14

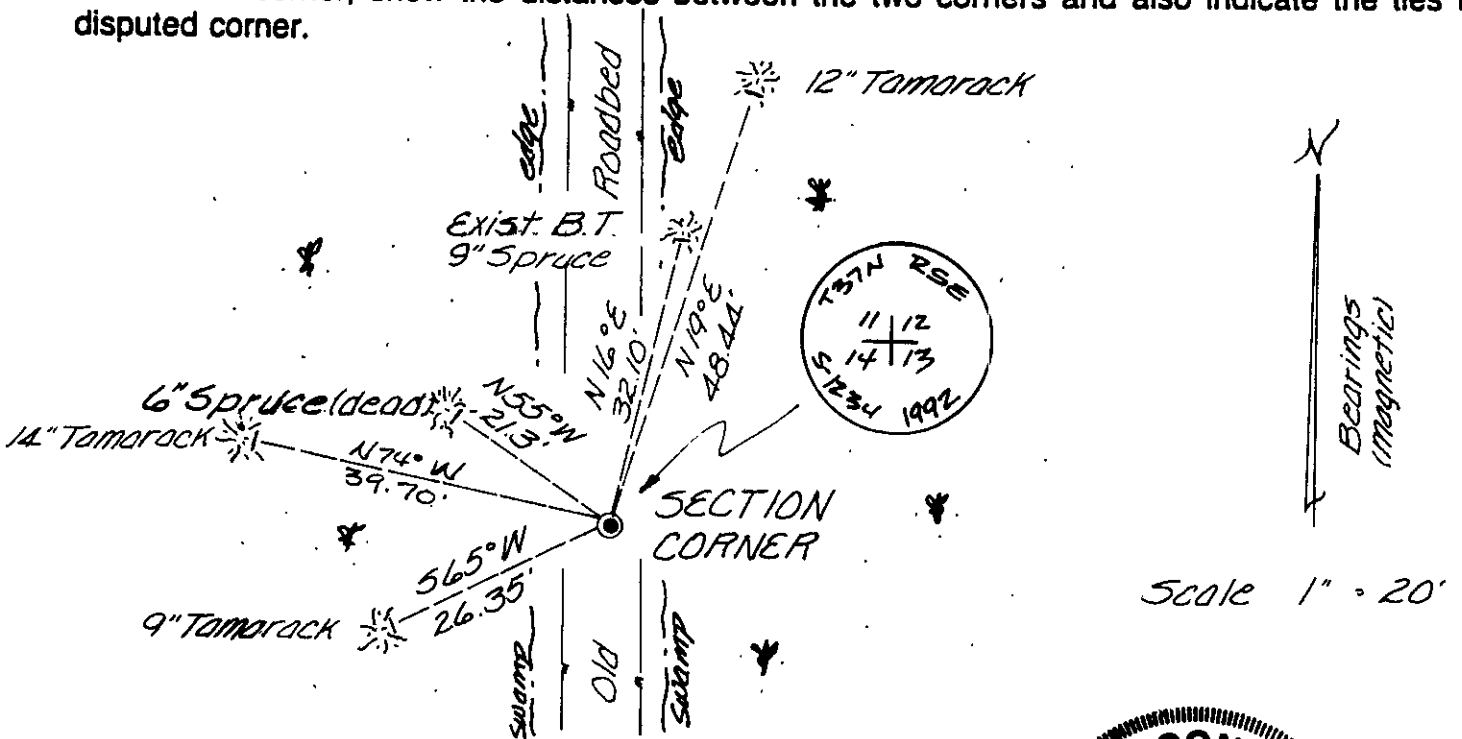
(b) (f) (g) (h) Description of monument found at this corner and if it was accepted, state all evidence (material, testimonial, occupational, plats, records, other monuments) used as a basis for accepting. If not accepted or if nothing was found, state evidence used as basis for establishing location. If reestablished through lost corner proportionate methods, indicate all monuments, distances and directions used to establish. Indicate type of monument found or set and sign post.

June 13th, 1863 - Joseph H. Jenkins, Deputy Surveyor, set post to sections 11, 12, 13, & 14 witnessed by two bearing trees: an 8" Tamarack bearing N30°W, 12 links and an 8" Tamarack bearing N65°E, 13 links.

1961 - Owens Illinois map identify the section corner as an iron pipe found in place witnessed by two bearing trees: a 6" Tamarack N68°W, 21.0' and an 8" Spruce N10°E, 31.0'.

May 28th, 1992 - James D. Rein, RLS No. 1234, recovered a 3/4" dia. iron pipe with an old post 3' East referenced by a dead 6" Spruce bearing N55°W, 21.3' and a 9" Spruce bearing N16°E, 32.10'. Replaced the iron pipe with a capped 3/4" dia. X 70" long drivable aluminum monument. Made new reference ties as shown in plan view. Set plastic post 1' N. E.

(c) (d) (e) Plan view of corner with ties to at least 4 witness monuments. If in disagreement with previously established corner, show the distances between the two corners and also indicate the ties to the disputed corner.



(i) I, James D. Rein, RLS No. 1234
 (type or print name) certify that the corner location on this record was determined by me or under my direction and control and that this U.S. Public Land Survey Monument Record is correct and complete to the best of my knowledge and belief.

Signature

James D. Rein

Date

June 18th, 1992



3705110000
Stamp

Index No. J-21