

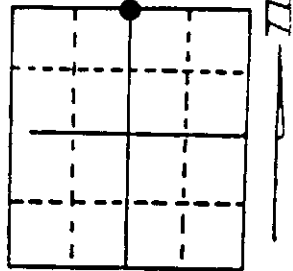
U.S. PUBLIC LAND SURVEY MONUMENT RECORD

Note: This form is intended and designed to fulfill all requirements of Wisconsin Administrative Code, Chapter A-E 7.08 U.S. Public Land Survey Monument Record (3) (a) (b) (c) (d) (e) (f) (g) (h) (i). An additional sheet may be added if necessary to conform with said requirements.

(a) Corner location: Township 37 North
 Range 5 East/West

Town/City/Village Little Rice

County Oneida



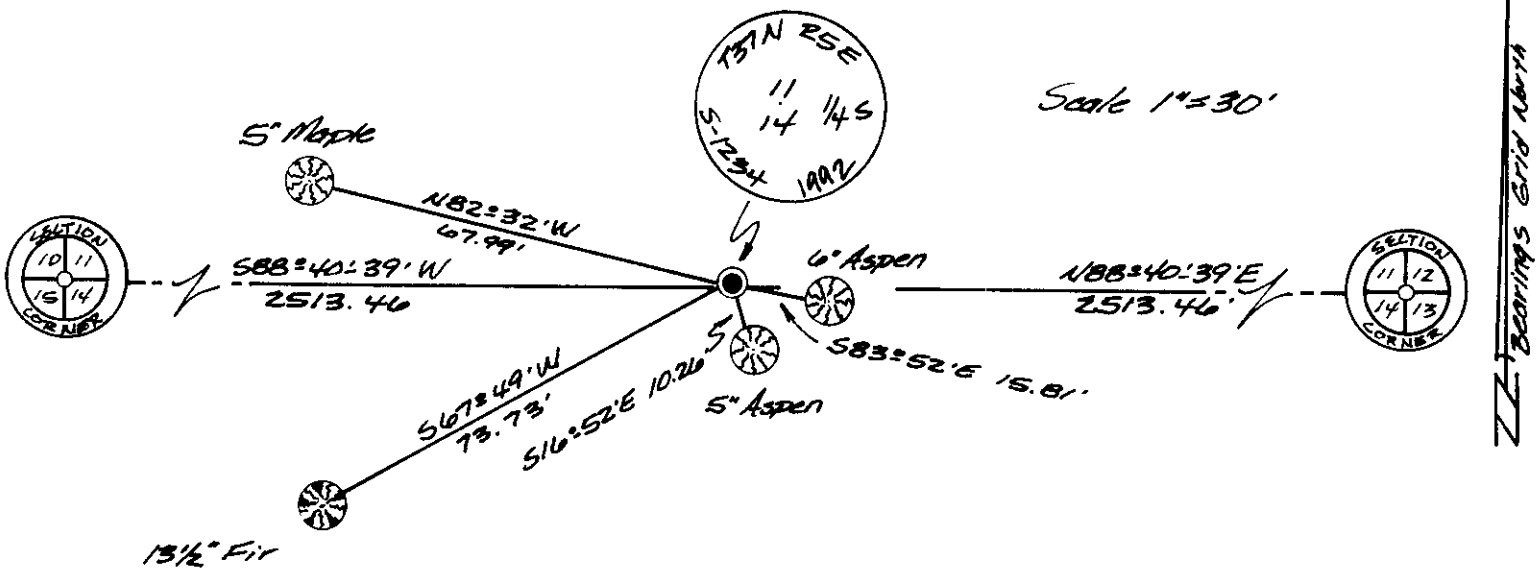
Section 14

(b) (f) (g) (h) Description of monument found at this corner and if it was accepted, state all evidence (material, testimonial, occupational, plats, records, other monuments) used as a basis for accepting. If not accepted or if nothing was found, state evidence used as basis for establishing location. If reestablished through lost corner proportionate methods, indicate all monuments, distances and directions used to establish. Indicate type of monument found or set and sign post.

June 15th, 1863 - Joseph H. Jenkins, Deputy Surveyor, set $\frac{1}{4}$ Post witnessed by two bearing trees: an 6" Spruce bearing N72°E, 27 links and a 5" Spruce bearing S11°W, 41 links.

May 14th, 1992 - James D. Rein, RLS No. 1234, searched, but unable to find any evidence of 1/4 corner or the meander corners on the Tomahawk River West along the section line. Set a capped 2" dia. X 30" long aluminum monument by single proportionate measurement. Made reference ties as shown in plan view. Set plastic post 3/4 foot N.W. of monument.

(c) (d) (e) Plan view of corner with ties to at least 4 witness monuments. If in disagreement with previously established corner, show the distances between the two corners and also indicate the ties to the disputed corner.



(i) I, James D. Rein, RLS No. 1234
 (type or print name) certify that the corner location on this record was determined by me or under my direction and control and that this U.S. Public Land Survey Monument Record is correct and complete to the best of my knowledge and belief.

James D. Rein June 18th, 1992
 Signature Date



3705110020
 Stamp

Index No. J-19