

U.S. PUBLIC LAND SURVEY MONUMENT RECORD

Note: This form is intended and designed to fulfill all requirements of the Wisconsin Administrative Code, Chapter A-E 7.08 U.S. Public Land Monument Record (3)(a)(b)(c)(d)(e)(f)(g)(h)(i). An additional sheet may be added if necessary to conform with said requirements.

REGISTER OF DEEDS OFFICE
ONEIDA COUNTY
FILED

MAY 25 2017

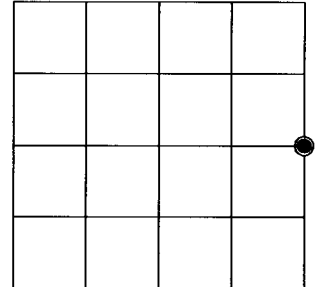
(a) CORNER LOCATION:
East Quarter Corner of Section 11
Township 37 North
Range 5 East
Town of Little Rice
County of Oneida

WISCRS - Oneida County
North: 191327.918 USft
East: 160391.388 USft
Latitude: 45° 42' 37.64135" N
Longitude: 89° 49' 00.84968" W
Datum: NAD 83(2011)
GNSS Method: RTK - Direct
GNSS Control: WISCRS VRS
Record North: 191327.916 USft
Record East: 160391.403 USft
Record Datum: NAD 83(1991)

AT _____ O'CLOCK _____ M
KYLE J. FRANSON
REGISTER OF DEEDS

(RECORDING AREA)

SECTION 11



(b) HISTORY OF ORIGINAL CORNER ESTABLISHMENT

Original Surveyor: Joseph H. Jenkins
Date of Survey: Commenced June 12th, 1863
Completed June 24th, 1863
Original B.T.'S: Spruce 6" S 55°E, 6 lks.
Spruce 7" S 56°W 8 lks.

(f)(g)(h) DESCRIPTION OF MONUMENT FOUND AT THIS CORNER AND IF IT WAS ACCEPTED, STATE ALL EVIDENCE (MATERIAL, TESTIMONIAL, OCCUPATIONAL, PLATS, RECORD, OTHER MONUMENTS) USED AS A BASIS FOR ESTABLISHING LOCATION. IF NOT ACCEPTED OR IF NOTHING WAS FOUND, STATE EVIDENCE USED AS BASIS FOR ESTABLISHING LOCATION. IF REESTABLISHED THROUGH LOST CORNER PROPORTIONATE METHODS, INDICATE ALL MONUMENTS, DISTANCES AND DIRECTIONS USED TO ESTABLISH. INDICATE TYPE OF MONUMENT AND SIGN POST FOUND OR SET.

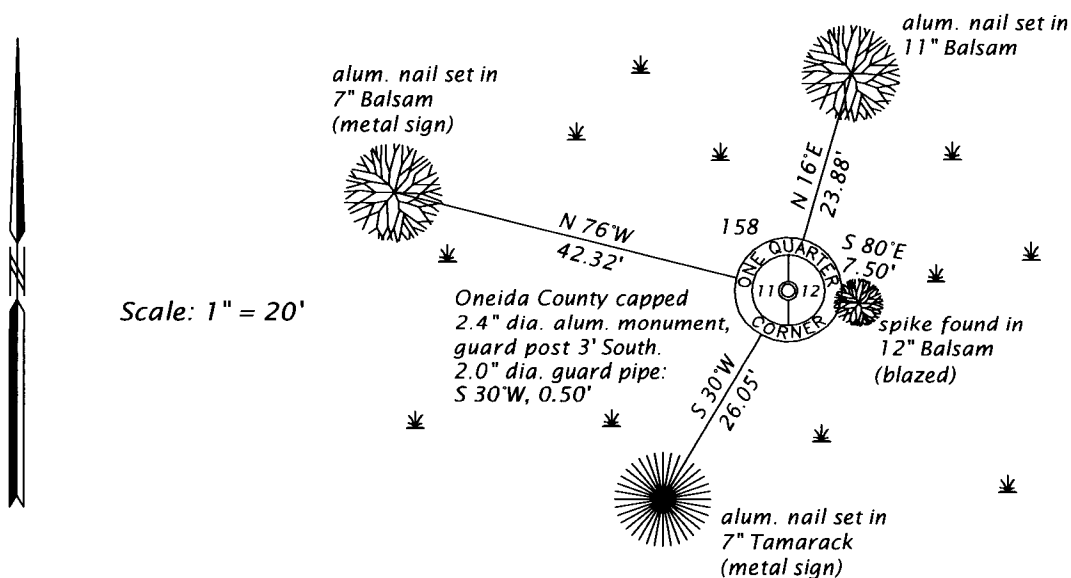
1962 - Ownens - Illinois, map of Section 11, T37N, R5E, showing ownership, legends this corner "BY OTHERS"

September 3, 1998 - Russell F. Brown, RLS No. 2148, Genisot and Associates, Inc. Dwg. No. 9932, filed as B1429, legends this corner "FOUND 1 1/2" IRON PIPE BY WOOD POST" and notes it was replaced by an Oneida County aluminum monument.

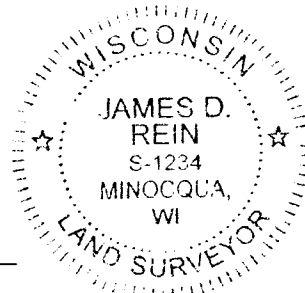
February 16, 2017 - James D. Rein, PLS No. 1234, we recovered an Oneida County capped aluminum monument. Although there is no remaining original evidence, or a perpetuation record for this corner, it has been accepted and recognized by subsequent surveyors, for surveys in both Sections 11 and 12 as marking the corner. Thus, I also accept the existing monument as perpetuation of the original corner and we made new reference ties to bearing trees as shown in the plan.

The coordinate value shown has been verified by at least one of the following methods: 1) comparison to a previously GPS determined published value; 2) the value is the average of two or more GPS observations at a markedly different time; 3) one or more distances were measured back to the GPS observed corner from temporary GPS observed offset locations.

(c)(d)(e) PLAN VIEW OF CORNER WITH TIES TO AT LEAST 4 WITNESS MONUMENTS. IF IN DISAGREEMENT WITH PREVIOUSLY ESTABLISHED CORNER, SHOW THE DISTANCE BETWEEN THE TWO CORNERS AND ALSO INDICATE THE TIES TO THE DISPUTED CORNER.



(i) I, JAMES D. REIN, PROFESSIONAL LAND SURVEYOR NO. S-1234 HEREBY CERTIFY THAT THE CORNER LOCATION ON THIS RECORD WAS DETERMINED BY ME OR UNDER MY DIRECTION AND CONTROL AND THAT THIS U.S. PUBLIC LAND SURVEY MONUMENT RECORD IS CORRECT AND COMPLETE TO THE BEST OF MY KNOWLEDGE AND BELIEF.



James D. Rein
SIGNATURE

5-15-17
DATE

INDEX NO. G - 21
3705112000