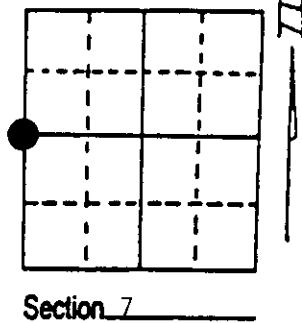


U.S. PUBLIC LAND SURVEY MONUMENT RECORD

Note: This form is intended and designed to fulfill all requirements of Wisconsin Administrative Code, Chapter A-E 7.08 U.S. Public Land Survey Monument Record (3) (a) (b) (c) (d) (e) (f) (g) (h) (i). An additional sheet may be added if necessary to conform with said requirements.

(a) Corner location: Township 37 North
Range 6 East/West

Town/City/Village Cassian
County Oneida



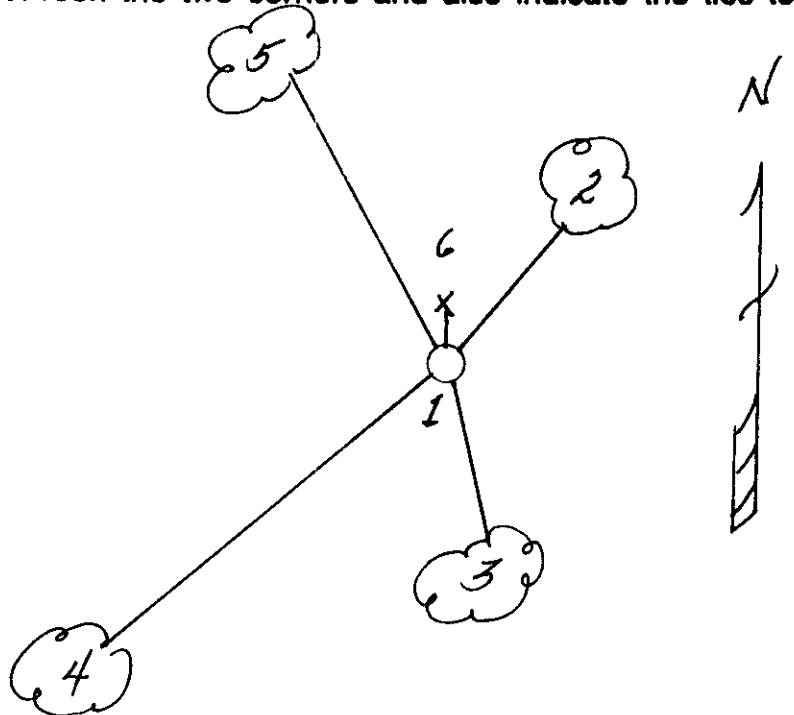
(b) (f) (g) (h) Description of monument found at this corner and if it was accepted, state all evidence (material, testimonial, occupational, plats, records, other monuments) used as a basis for accepting. If not accepted or if nothing was found, state evidence used as basis for establishing location. If reestablished through lost corner proportionate methods, indicate all monuments, distances and directions used to establish. Indicate type of monument found or set and sign post.

- 9/1860 - Alfred Millard established this corner at 80.00 chains and set a wood post/two BTs:
4" Spruce, N78°E, 5 Links (3.30') 5" Aspen, S65°W, 8 Links (5.28')
- 1937 - V. Maine restored corner and set a 2" x 60" iron pipe/brass cap.
- 10/27/1994 - Milo E. Stefan found Maine's monument, scribed Cedar Post along side and two BTs overgrown:
12" White Pine, N40°E, 8.51' 16" White Pine, S22°E, 6.58'
We made two additional BTs and set a plastic sign post.

(c) (d) (e) Plan view of corner with ties to at least 4 witness monuments. If in disagreement with previously established corner, show the distances between the two corners and also indicate the ties to the disputed corner.

- 1) 2" x 60" Iron Pipe/Brass Cap.
- 2) 14" White Pine, N40°E, 8.51'.
- 3) 16" White Pine, S22°E, 6.58'.
- 4) 12" White Pine, S54°W, 56.65'.
- 5) 14" White Pine, N36°W, 67.84'.
- 6) Plastic Sign Post, North, 1.0'.

Distances to nail in side of BTs.
Stump blaze scribed "BT".



(i) I, Milo E. Stefan
(type or print name) certify that the corner location on this record was determined by me or under my direction and control and that this U.S. Public Land Survey Monument Record is correct and complete to the best of my knowledge and belief.

Milo E. Stefan Signature October 30, 1994 Date



Index No. G-1

Stamp 3705122000

FEB 23 2016

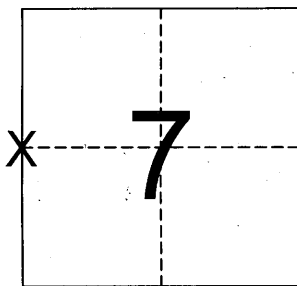
AT _____ O'CLOCK _____ M
KYLE J. FRANSON
REGISTER OF DEEDS

U.S. PUBLIC LAND SURVEY MONUMENT RECORD

W 1/4 CORNER, SECTION 7 T. 37 N., R. 6 E., TOWN OF Cassian, ONEIDA COUNTY, WISCONSIN.

	COUNTY PLANE COORDINATES (NAD-83/91 Adj.) (NAD-83, WISCORS 2011 Adj. RTK)		STATE PLANE COORDINATES	
NORTH	<u>191313.911</u>	<u>(191313.81)</u>	NORTH	_____
EAST	<u>165804.828</u>	<u>(165804.87)</u>	EAST	_____
SCALE FACTOR	_____	_____	SCALE FACTOR	_____
THETA ANGLE	_____	_____	THETA ANGLE	_____

LOCATION SKETCH



HISTORY

09-11-1860, Alfred Millard established this corner when he set the Exterior Township Lines and marked B.Ts. Aspen 5" S65W 8 links (5.28'), Spruce 4" N78W 5 links (3.30').

1863, Joseph H. Jenkins made no mention of this corner.

11-19-1936, County Surveyor, V.M. Maine, in Book 1, page 155, says he found Original Gov't. 1/4 Stake between Secs. 7&12, A very old stake, later verified by C.B. Howe as location of Original. Set Official Corner, marked B.Ts. viz: J.P. 8" N8 1/2°W, 1.56 Links (1.03').

1937 - Maine placed a 2" x 60" iron pipe/brass cap.

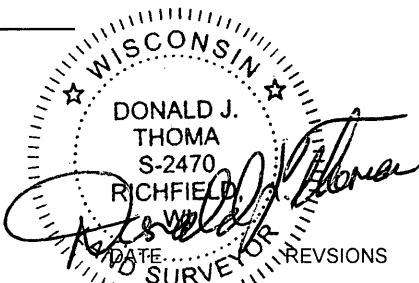
1957, Owen-Illinois section sheet shows corner by others: 5" W.P. S30E 6.0', 4" W.P. N40E 9.0'.

10-30-1994 - Milo E. Stefan found Maine's monument, scribed Cedar post along side and two BTs overgrown:
12" White Pine, N40°E, 8.51' 16" White Pine, S22TE, 6.58'
We made two additional BTs and set plastic sign post.

04-17-2015 Donald J. Thoma, S - 2470, I found a 2 1/2" iron pipe with a brass cap, tall, in a hole that looked to be from an old post. The monument is in good condition. I accepted the monument and took ties.

Survey # S-2470 *M. J. Thoma* Mar 27, 2015

Firm (Surveyor) Accurate Surveying & Engineering, LLP
(Address) 2911 Wildlife Lane
Richfield, WI 53076



RECEIVED FOR RECORD

SIGNED _____
ONEIDA COUNTY SURVEYOR

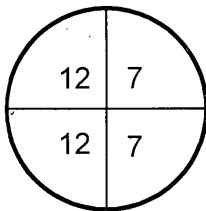
SIGNED _____
ONEIDA COUNTY SURVEYOR

DATE _____ REVISIONS _____

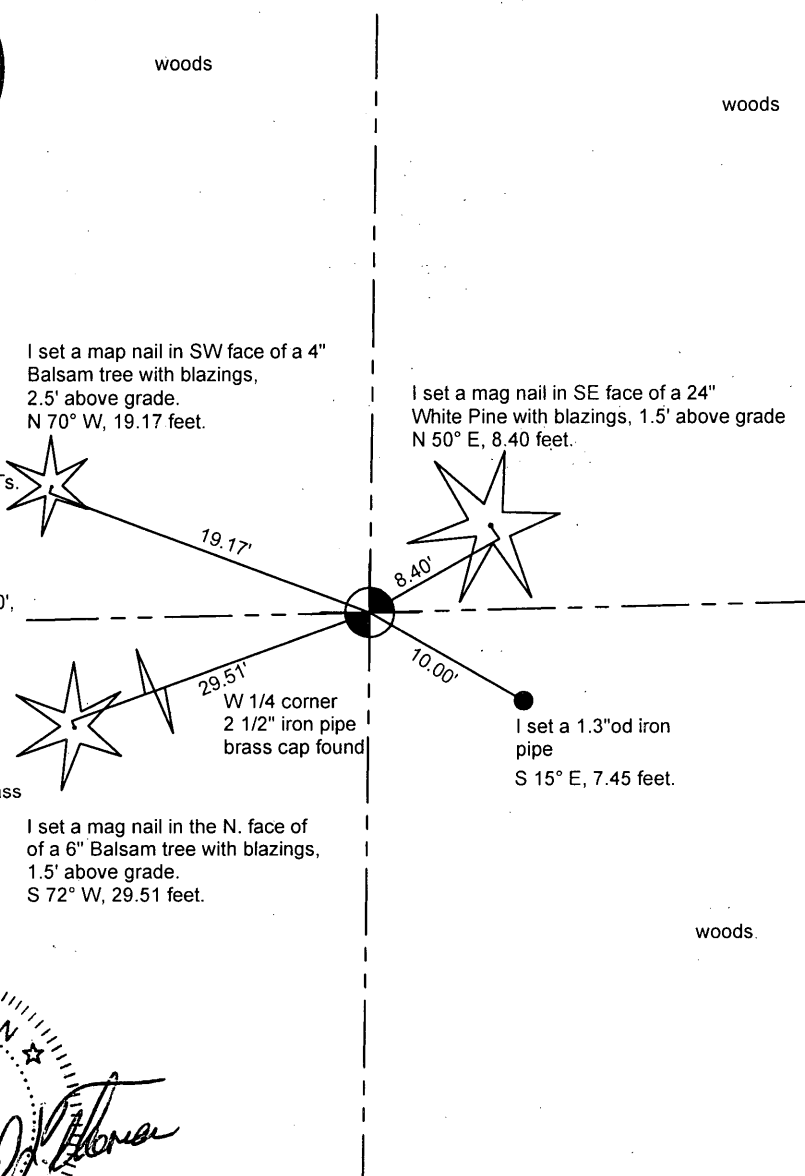
COUNTY KEY NUMBER
3705122000

SFUS KEY NUMBER
G 1

T. 37 N.-R. 6 E.



TIE SKETCH



I set a map nail in SW face of a 4" Balsam tree with blazings, 2.5' above grade. N 70° W, 19.17 feet.

I set a map nail in SE face of a 24" White Pine with blazings, 1.5' above grade N 50° E, 8.40 feet.

W 1/4 corner 2 1/2" iron pipe brass cap found

I set a 1.3"od iron pipe S 15° E, 7.45 feet.

I set a map nail in the N. face of of a 6" Balsam tree with blazings, 1.5' above grade. S 72° W, 29.51 feet.