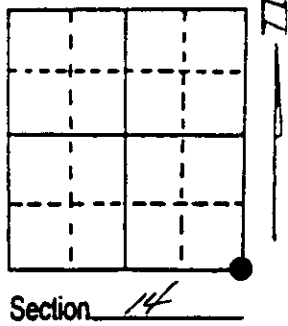


# U.S. PUBLIC LAND SURVEY MONUMENT RECORD

Note: This form is intended and designed to fulfill all requirements of Wisconsin Administrative Code, Chapter A-E 7.08 U.S. Public Land Survey Monument Record (3) (a) (b) (c) (d) (e) (f) (g) (h) (i). An additional sheet may be added if necessary to conform with said requirements.

(a) Corner location: Township 37 North  
 Range 5 East West

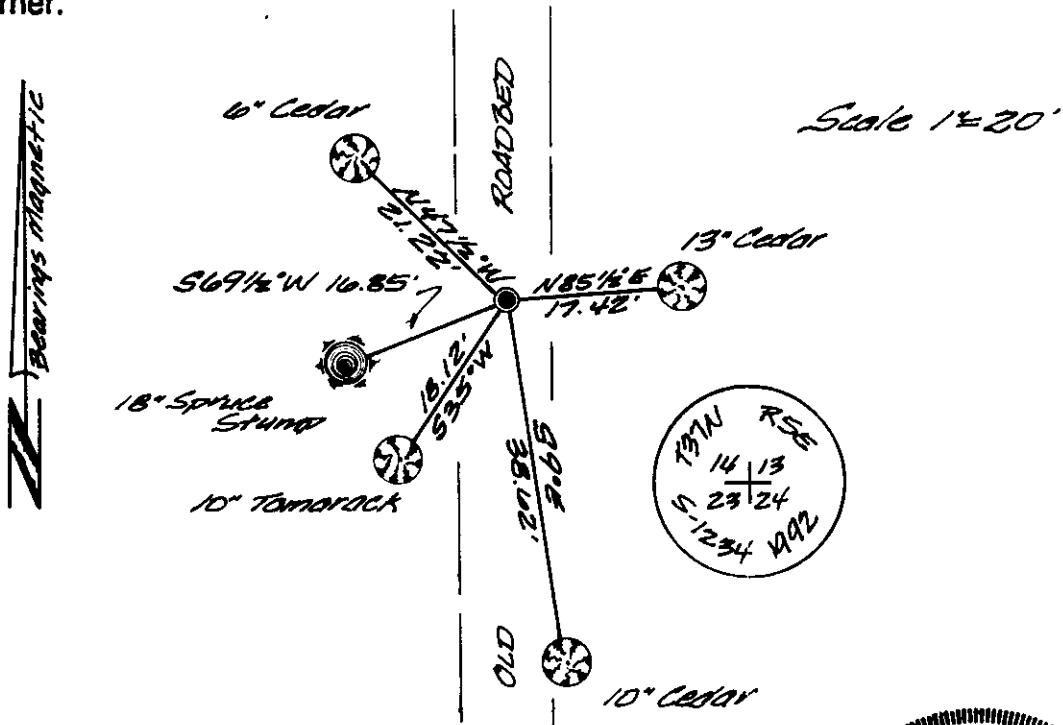
Town/City/Village Little Rice  
 County Oneida



(b) (f) (g) (h) Description of monument found at this corner and if it was accepted, state all evidence (material, testimonial, occupational, plats, records, other monuments) used as a basis for accepting. If not accepted or if nothing was found, state evidence used as basis for establishing location. If reestablished through lost corner proportionate methods, indicate all monuments, distances and directions used to establish. Indicate type of monument found or set and sign post.

June 13th, 1863 - Joseph H. Jenkins, Deputy Surveyor, set post to sections 13, 14, 23, & 24 witnessed by two bearing trees: a 13" Cedar bearing N12°W, 20 links; and an 8" Birch bearing N60°E, 38 links.  
 April 1963 - Northwoods Surveyors, James G. Griffin, identifies on map that the section corner was referenced by a 12" Cedar bearing N87°E, 17.2' and a 10" Spruce bearing S62°W, 16.5'.  
 March 27th, 1992 - James D. Rein, RLS No. 1234, found iron pipe out lying on East side of old North-South road. Set capped 3/4" dia. x 70" long drivable aluminum monument by crossing Griffin's bearing trees: a 13" Cedar bearing N85 1/2°E, 17.2' to face of blaze; and a 18" Spruce stump bearing S69 1/2°W, 16.5' to face of blaze. Made new reference ties as shown in plan view, distance measurements to nails in center of root crown on side of trees. Set plastic post 3' East of monument.

(c) (d) (e) Plan view of corner with ties to at least 4 witness monuments. If in disagreement with previously established corner, show the distances between the two corners and also indicate the ties to the disputed corner.



(i) I, James D. Rein, RLS No. 1234  
 (type or print name) certify that the corner location on this record was determined by me or under my direction and control and that this U.S. Public Land Survey Monument Record is correct and complete to the best of my knowledge and belief.

James D. Rein June 18th, 1992  
 Signature Date



Stamp  
 3705 140000