

U.S. PUBLIC LAND SURVEY MONUMENT RECORD

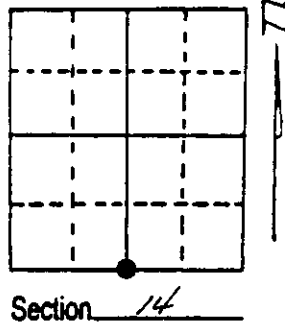
Note: This form is intended and designed to fulfill all requirements of Wisconsin Administrative Code, Chapter A-E 7.08 U.S. Public Land Survey Monument Record (3) (a) (b) (c) (d) (e) (f) (g) (h) (i). An additional sheet may be added if necessary to conform with said requirements.

(a) Corner location: Township 37 North

Range 5 East

Town/City/Village Little Rice

County Oneida



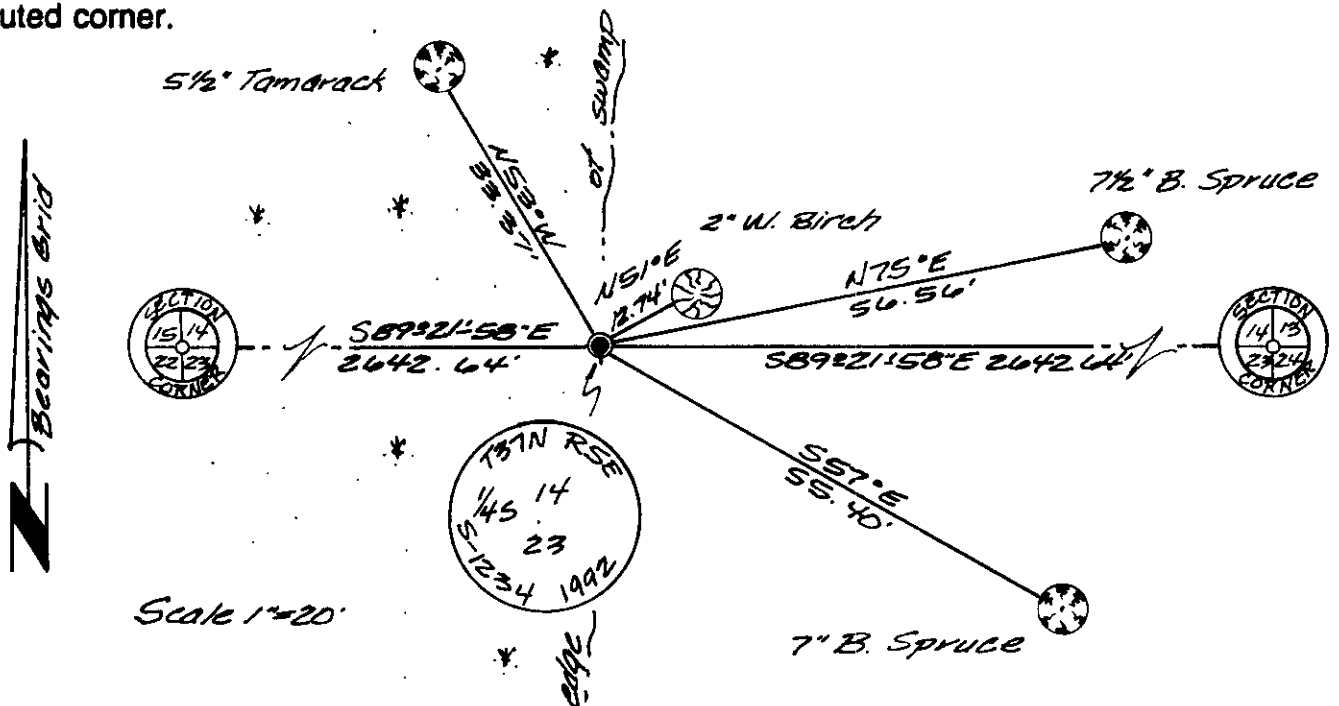
(b) (f) (g) (h) Description of monument found at this corner and if it was accepted, state all evidence (material, testimonial, occupational, plats, records, other monuments) used as a basis for accepting. If not accepted or if nothing was found, state evidence used as basis for establishing location. If reestablished through lost corner proportionate methods, indicate all monuments, distances and directions used to establish. Indicate type of monument found or set and sign post.

June 14th, 1863 - Joseph H. Jenkins, Deputy Surveyor, set $\frac{1}{4}$ Post 0.25 chains East of Tamarack swamp, witnessed by two bearing trees: an 8" Tamarack bearing S3°W, 12 links and a 12" Tamarack bearing N70°W, 7 links.

March 26th, 1895 - B.F. Dorr, County Surveyor, measured 39.80 chains west from the Southeast corner of Section 14.

May 14th, 1992 - James D. Rein, RLS No. 1234, could not recover any original evidence. Set a capped $\frac{3}{4}$ " aluminum monument for the $\frac{1}{4}$ corner positioned proportionally between the section corners directly to the East and to the West. Made reference ties as shown in plan view. Set plastic post $\frac{1}{2}$ foot North of set monument.

(c) (d) (e) Plan view of corner with ties to at least 4 witness monuments. If in disagreement with previously established corner, show the distances between the two corners and also indicate the ties to the disputed corner.



(i) I, James D. Rein, RLS No. 1234
 (type or print name) certify that the corner location on this record was determined by me or under my direction and control and that this U.S. Public Land Survey Monument Record is correct and complete to the best of my knowledge and belief.

James D. Rein Signature June 18th, 1992 Date



Stamp
3705140020

Index No. N-19